

Corner A:  
 Section 27-97-12  
 As referred to in  
 Eng's Tie Book

Chickasaw Co. Recorder  
 Cindy Messersmith  
**Fee Book 2008-2362**  
 12/16/2008 @1149AM  
 SCC SEC COR CERT  
 Book: Page: # Pages: 1  
 Total Fees: \$7.00

Herold - Recks Surveying, 25 1/2 East Main Street, Suite 204, New Hampton, IA 50659, Ph 641-394-2725

**UNITED STATES PUBLIC LAND SURVEY CORNER CERTIFICATE**

Land Survey Monuments situated in Section <sup>22</sup> 27, Township 97 North, Range 12 West of the Fifth Principal Meridian, Chickasaw County, Iowa. Previously not recorded in the County Recorder's office.

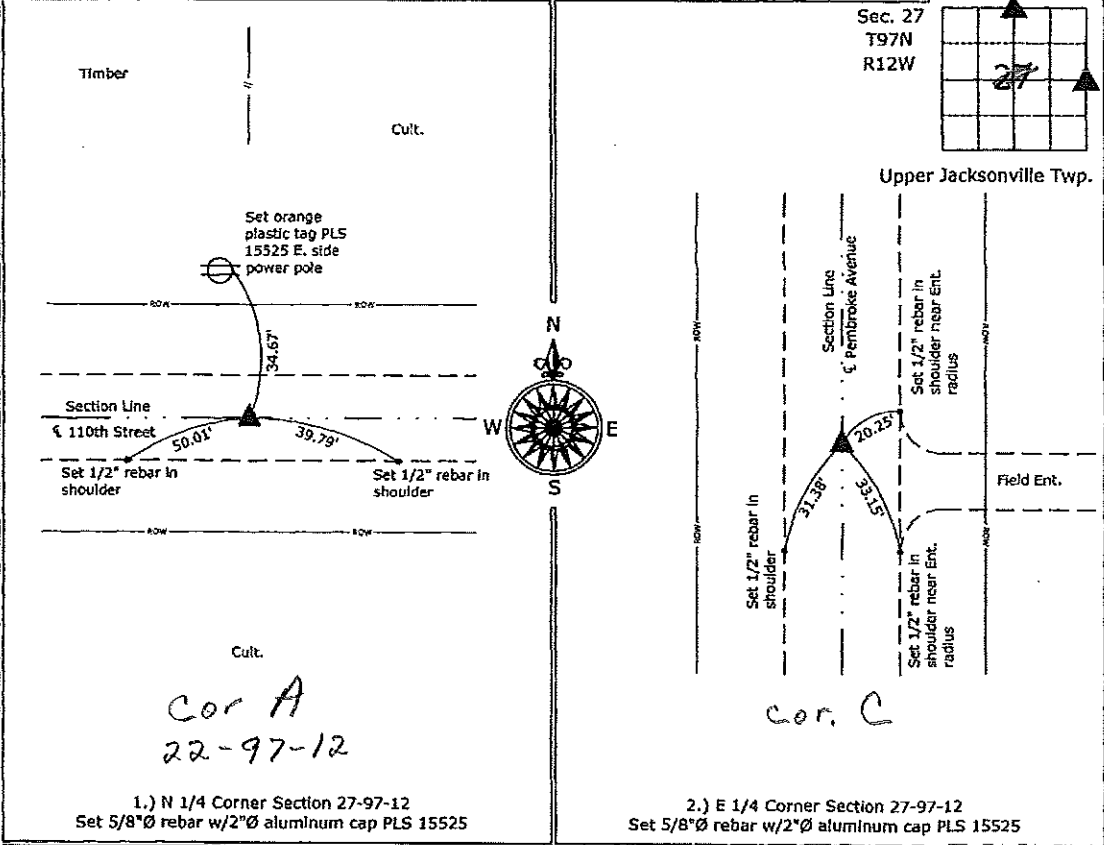
This certificate is being prepared in compliance with Iowa Code Chapter 355.11 because:

- There is no certificate on file for this corner.
- There are no longer three valid ties of record.
- There are changes to reference ties of record.
- There is change of monumentation of record.
- To clarify description of record monument (ties).

**Monument Description and Remarks:**  
**N 1/4 Corner** - County Engineer's office records indicate an iron pin set in 1930. Searched 30' area with metal locator and found nothing. Set 5/8"Ø rebar w/2"Ø aluminum cap PLS 15525 by the doubling the distance from the NE corner to a position at the NE Corner of the NW 1/4-NE 1/4, set at the centerline of 110th Street, this position lines up with the remnants of a fence running North and South.  
**E 1/4 Corner** - County Engineer's office records indicate set iron pin over pointed stone, retied in 1956. Searched 30' area with metal locator and found nothing. All county ties are missing. Set 5/8"Ø rebar w/2"Ø aluminum cap PLS 15525 at the centerline of Pembroke Avenue by extending a line from the W 1/4 corner through a position at the Center of Section.

**PLAN - VIEW**

(Show a minimum of three reference ties to durable physical objects, relevant monuments and physical conditions that will enable recovery of the corner.)



1.) N 1/4 Corner Section 27-97-12  
 Set 5/8"Ø rebar w/2"Ø aluminum cap PLS 15525

2.) E 1/4 Corner Section 27-97-12  
 Set 5/8"Ø rebar w/2"Ø aluminum cap PLS 15525



I hereby certify that this land surveying document was prepared and the related survey work was performed by me or under my direct personal supervision and that I am a duly licensed Land Surveyor under the laws of the State of Iowa.  
*Paul R. Herold* 12-16-08  
 Paul R. Herold Date:  
 License number 15525  
 My license renewal date is December 31, 2008.  
 Sheets covered by this seal: Individual sheet only

List Corners to be Indexed			
Corners	Section	Twp.	Range
N 1/4	27	97	12
E 1/4	27	97	12

Project Number: 2008-140  
 FB: Chickasaw County 3, Pgs. 16-17

File: S:\Projects\2008\2008-140.dwg, 12/16/2008 11:16:52 AM