

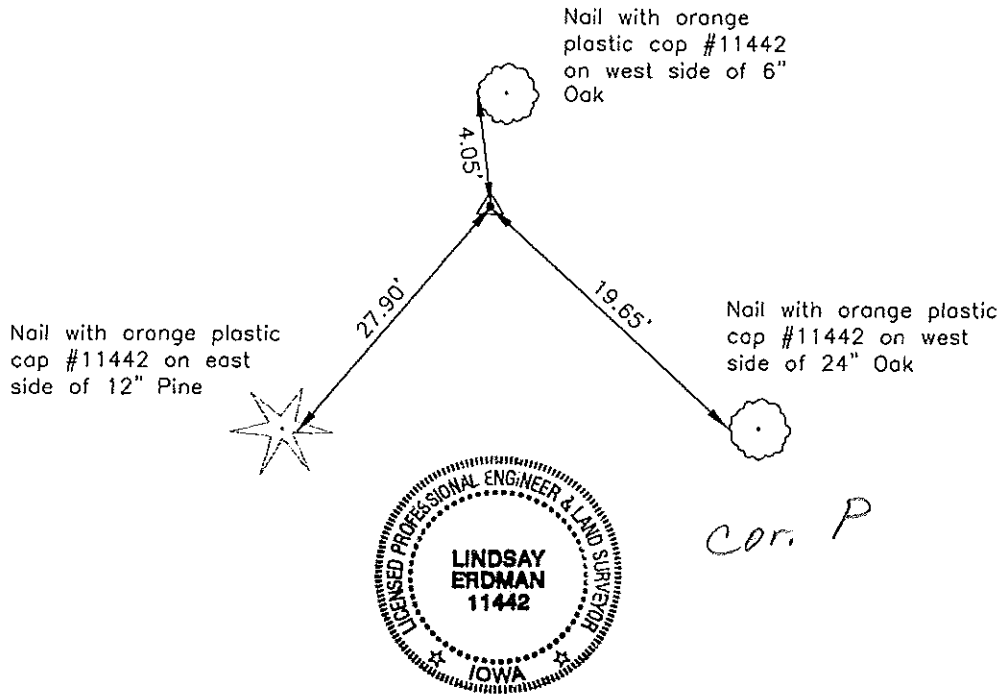
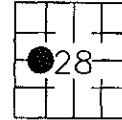
Prepared by: Erdman Engineering, P.C., 708 Commerce Drive, P.O. Box 246, Decorah, Iowa 52101 (563) 382-4194

United States Public Land Survey Corner Certificate  
 of

Land Survey Monuments situated in Section 28, Township 97, Range 12 West of  
 the 5th Principal Meridian in Chickasaw County, Iowa. Previously recorded in  
does not apply in the county Recorder's Office.

Monument Description and Remarks: This certificate is prepared in accordance with  
 Section 193C of the Code of Iowa. No previous certificate has been filed for this  
 corner location. We found no record of the W 1/8 Corner being set. We found no  
 evidence of a monument in the field. We found the N 1/4 Corner, E 1/4 Corner, S 1/4  
 Corner. We set the W 1/4 Corner. We computed the location of the Center Section at the  
 intersection of the lines from the quarter corners. We set a 3/4" diameter steel bar with  
 2" aluminum cap #11442 on line and equidistant between the W 1/4 corner and the  
 Center Section as the W 1/8 Corner of Section 28, Township 97 North, Range 12 West.

Plan-View



I hereby certify that this land surveying document was prepared and the related survey work was performed by me or under my direct personal supervision and that I am a duly licensed Land Surveyor under the laws of the State of Iowa.

Signature *Lindsay Erdman*  
 Lindsay Erdman, P.E. and P.L.S. Iowa License Number 11442

Date: 8/1/08

My license renewal date is December 31, 2008

Corner(s) to be Indexed

Corner	Section	Township	Range
W 1/8	28	97	12