

UNITED STATES PUBLIC LAND SURVEY CORNER CERTIFICATE

OF

Land Survey Monuments situated in Section 21, Township 97 North, Range 12 West, of the Fifth Principal Meridian, CHICKASAW County, Iowa. Previously recorded in none in County Recorder's Office. (book, page, document number, etc.)

(Show reason for preparing this certificate, the evidence and detailed procedures used in establishing the corner positions and monumentation found or placed.)

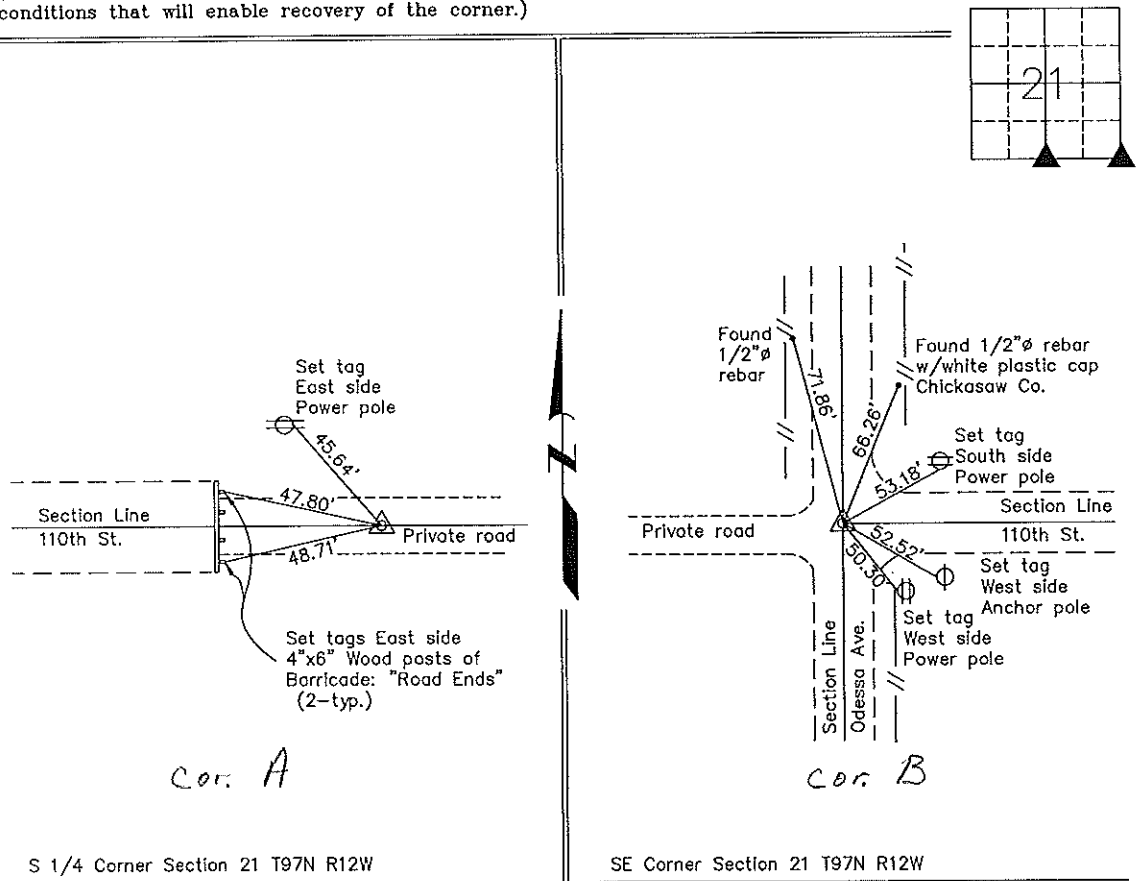
Monument Description and Remarks: S 1/4 Corner Section 21 T97N R12W: Found 1" square iron bar.

SE Corner Section 21 T97N R12W: Found 1/2"Ø iron pin.

Note: Both corners were found from information obtained from the Chickasaw County Engineer's Office.

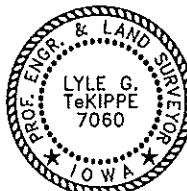
PLAN - VIEW

(Show a minimum of three reference ties to durable physical objects, relevant monuments and physical conditions that will enable recovery of the corner.)



I hereby certify that this land surveying document was prepared and the related survey work was performed by me or under my direct personal supervision and that I am a duly licensed Land Surveyor under the laws of the State of Iowa.

Lyle G. TeKippe 4-7-98
 Lyle G. TeKippe Date
 License number 7060
 My license renewal date is December 31, 1998.
 Sheets covered by this seal: Individual



List Corners to be Indexed			
Corners	Section	Twp.	Range
S 1/4 Corner A	21	21-97-12	97N 12W
SE Corner B	21	21-97-12	97N 12W

Placed in tie book
 4/9/98