



Prepared by: Kyle A. Johnson Address: 1900 MEDICAL ARTS AVE S, SUITE 100 SARTELL, MN Phone: 1-888-937-5150

UNITED STATES PUBLIC LAND SURVEY CORNER CERTIFICATE FOR

Land survey monuments situated in Section 28, Township 97 NORTH
12 WEST, of the Fifth Principal Meridian, CHICKASAW County, Iowa.

Previously Recorded in _____ in County Recorder's Office.

(Show reason for preparing this certificate, the evidence and detailed procedures used in establishing the corner positions and monumentation found or placed.)

MONUMENT DESCRIPTION AND REMARKS:

THIS DOCUMENT IS INTENDED TO REPLACE INSTRUMENT #2022-1893 AS THERE WAS AN ERROR IN THE CORNER IDENTIFICATION.

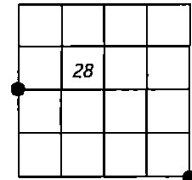
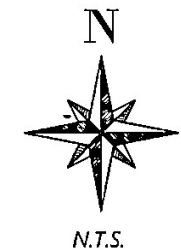
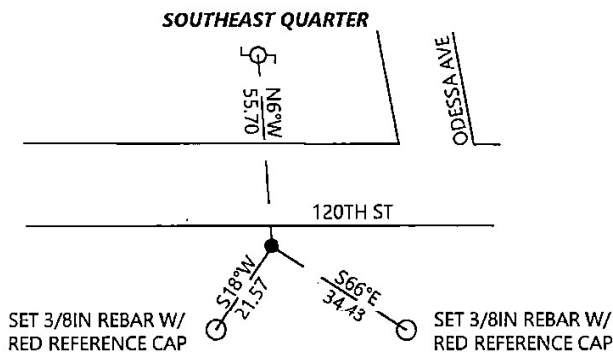
WEST QUARTER: Westwood Professional Services found a 1/2" rebar with 1-1/2" aluminum cap and 2 ties per 2008 corner record. Monument also agrees with distances from 2012 survey. Accepting corner location and set 1 tie. Filing corner record as there are no longer 3 valid ties of record.

SOUTHEAST CORNER: Westwood Professional Services found a 3/4" smooth bar that agrees with previous records. Accepting corner location and set 3 ties. Filing corner record as there are no longer 3 valid ties of record.

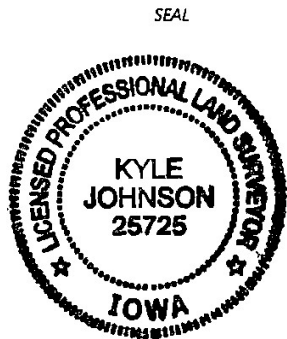
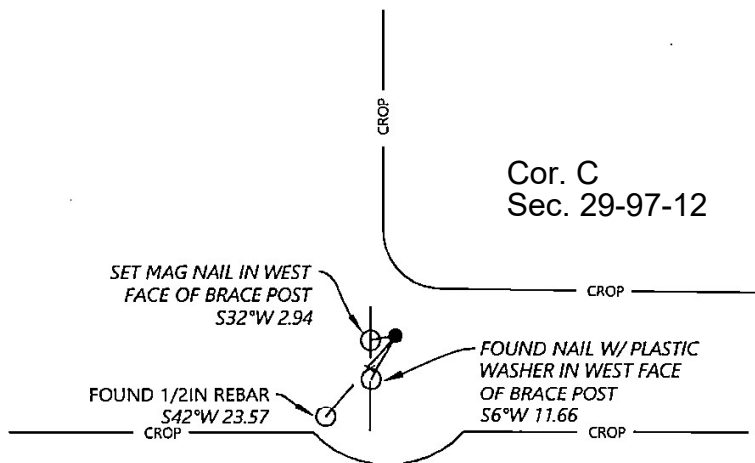
PLAN - VIEW

(Show a minimum of three reference ties to durable physical objects, relevant monuments and physical conditions that will enable recovery of the corner.)

Cor. B
 Sec. 28-97-12



WEST QUARTER



I hereby certify that this land surveying document was prepared and the related survey work was performed by me or under my direct personal supervision and that I am a duly licensed Land Surveyor under the laws of the state of Iowa.

Signature: Kyle Johnson Date: 01/03/2023

Typed/Printed Name: Kyle A. Johnson

License Number: 25725

My license renewal date is December 31, 2024

Pages or sheets covered by this seal: THIS SHEET

Corners to be Indexed

Corners	Section	Twp.	Range
WQ	28	97	12
SE	28	97	12