

Prepared by & Return to: Herold - Reicks Surveying, 10 East Main Street, New Hampton, IA 50658, Ph. 641-354-2725

United States Public Land Survey Corner Certificate

Land Survey Monument situated in
 Section ¹⁰29, Township 97 North, Range 12 West of the Fifth Principal Meridian, Chickasaw County, Iowa.
 Not on file in the County Recorder's office.

This certificate is being prepared in compliance with Iowa Code Chapter 355.11 because:

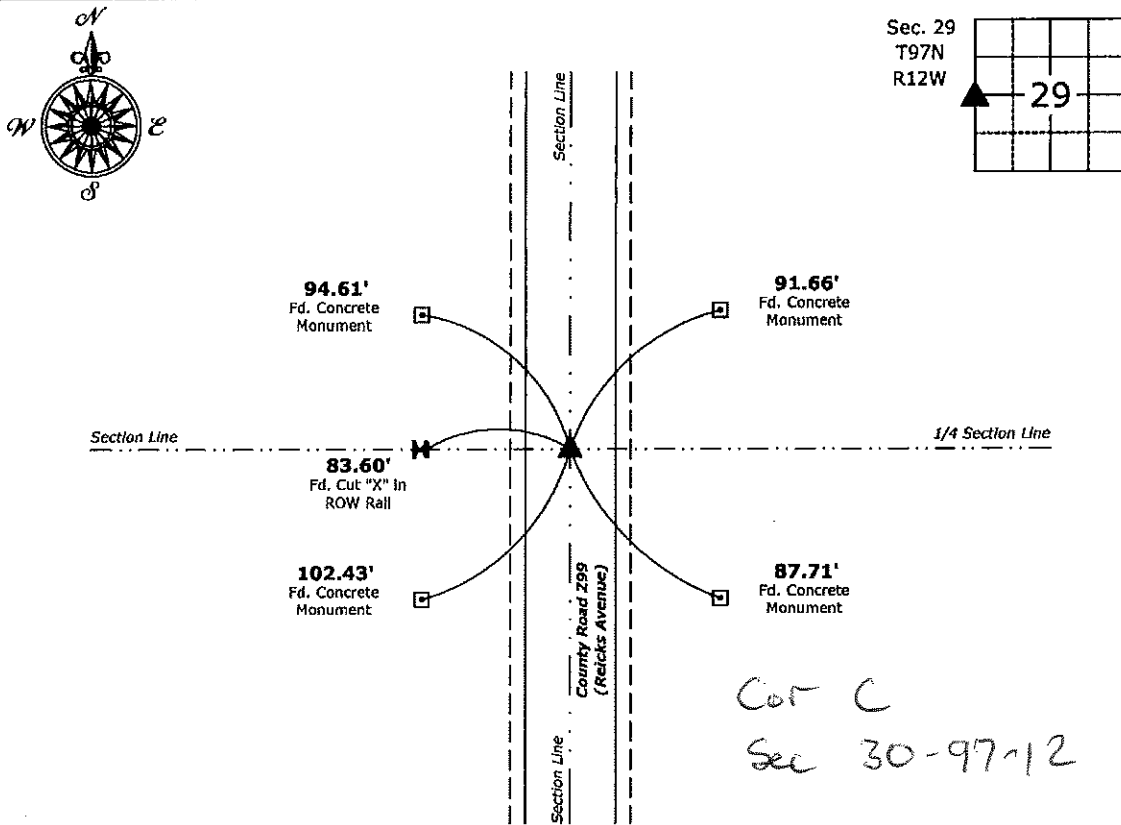
- There is no certificate on file for this corner.
- There are no longer three valid ties of record.
- There are changes to reference ties of record.
- There is change of monumentation of record.
- To clarify description of record monument (ties).

Monument Description and Remarks:

W 1/4 Corner: Found Survey Mark Nail w/Iowa Department of Transportation stainless steel washer with information obtained from the Iowa Department of Transportation, the previous Monument (Hinge Nail) was covered by an HMA Overlay and the Corner was Re-Monumented by the I.D.O.T.

Plan View

(Show a minimum of three reference ties to durable physical objects, relevant monuments and physical conditions that will enable recovery of the corner.)



Cor C
 Sec 30-97-12

W 1/4 Corner of Section 29-97-12
 Found Survey Mark Nail w/Iowa DOT stainless steel washer



I hereby certify that this land surveying document was prepared and the related survey work was performed by me or under my direct personal supervision and that I am a duly licensed Land Surveyor under the laws of the State of Iowa.

Paul R. Herold 5-5-17
 Paul R. Herold Date:
 License number 15525
 My license renewal date is December 31, 2018.
 Sheets covered by this seal: Individual sheet only

List Corner to be Indexed			
Corner	Section	Twp.	Range
W 1/4	29	97	12
Project Number: 2017-022			
FB: Chickasaw 8, Pgs. 33-35			

FILE