

Prepared by & Return to: Herold - Reicks Surveying, 10 East Main Street, New Hampton, IA 50659, Ph. 641-394-2725

UNITED STATES PUBLIC LAND SURVEY CORNER CERTIFICATE

Land Survey Monuments situated in Section 19, Township 97 North, Range 12 West of the Fifth Principal Meridian, Chickasaw County, Iowa. 1., 2.) Previously unrecorded in the County Recorder's office.

This certificate is being prepared in compliance with Iowa Code Chapter 355.11 because:

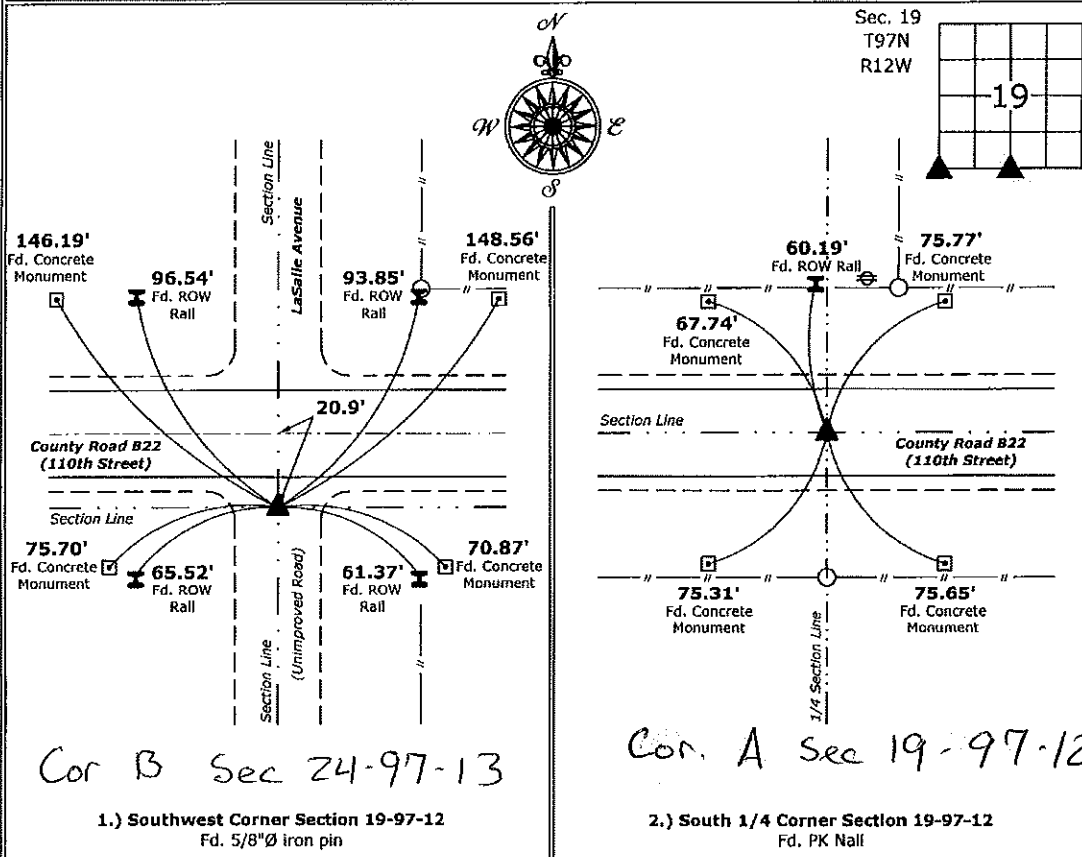
- 1 & 2 There is no certificate on file for this corner.
- There are no longer three valid ties of record.
- There are changes to reference ties of record.
- There is change of monumentation of record.
- To clarify description of record monument (ties).

Monument Description and Remarks:

- 1.) **Southwest Corner:** Fd. 5/8"Ø iron pin with information obtained from the County Engineers office.
- 2.) **South 1/4 Corner:** Fd. PK Nail with information obtained from the County Engineers office.

PLAN - VIEW

(Show a minimum of three reference ties to durable physical objects, relevant monuments and physical conditions that will enable recovery of the corner.)



I hereby certify that this land surveying document was prepared and the related survey work was performed by me or under my direct personal supervision and that I am a duly licensed Land Surveyor under the laws of the State of Iowa.

Kirk D. Reicks 6-17-16
 Kirk D. Reicks Date:
 License number 19211
 My license renewal date is December 31, 2016.
 Sheets covered by this seal: Individual sheet only

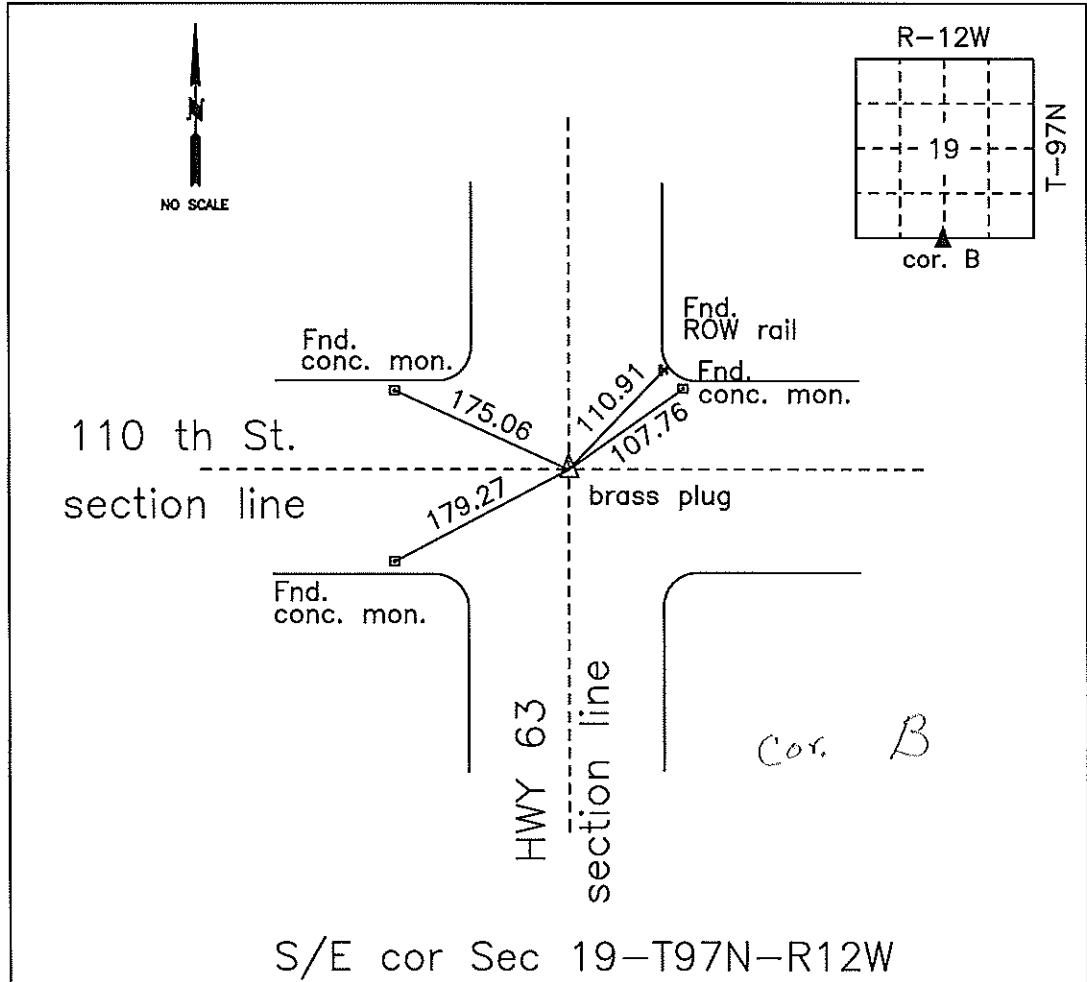
List Corners to be Indexed			
Corners	Section	Twp.	Range
SW	19	97	12
S 1/4	19	97	12

Project Number: 2016-023
 FB: Chickasaw 7, Pgs. 65-67

File: S:_CSD Projects\County Control Systems\CHICKASAW\CHICK-5.dwg, 6/13/2016 8:50:00 AM

COUNTY ENGINEER'S SECTION CORNER PRESERVATION RECORD

LAND SURVEY MONUMENT LOCATED IN SECTION 19, TOWNSHIP 97 N
 NORTH, RANGE 12 W, OF THE 5TH P.M. Chickasaw County, IOWA
 PREVIOUSLY RECORDED Chickasaw County Tie Book



MONUMENT DESCRIPTION AND NARRATIVE Found brass plug

Information previously recorded in Chickasaw County Tie Book in Feb. 1971. This section corner is referred to as sta. 416+42.1 on Chickasaw County Paving Plans FN289-1(1)--21-19

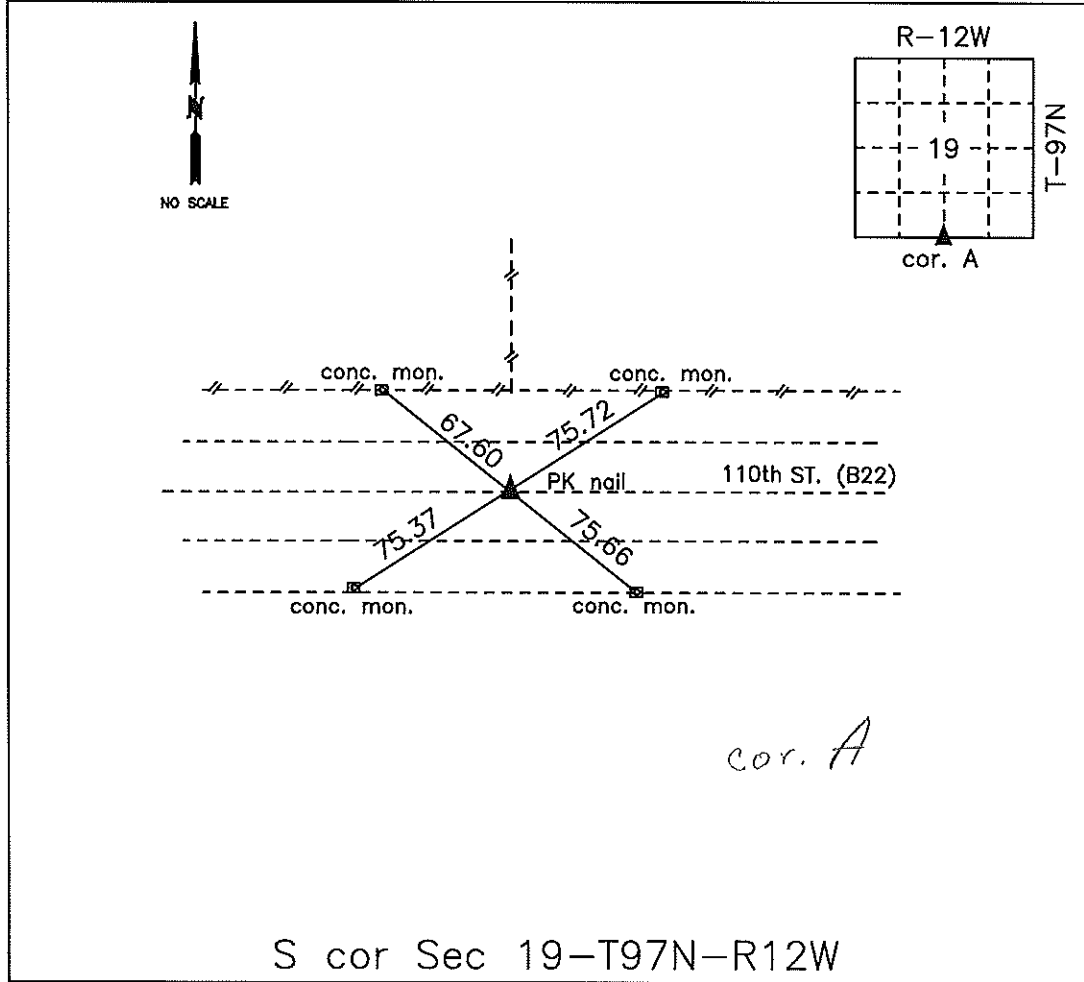
All ties are GPS surveyed.

I AM NOT A REGISTERED LAND SURVEYOR UNDER THE LAWS OF THE STATE OF IOWA

JIM FOSTER CHICKASAW CO. DATE: 10/16/12

COUNTY ENGINEER'S SECTION CORNER PRESERVATION RECORD

LAND SURVEY MONUMENT LOCATED IN SECTION 19, TOWNSHIP 97 N
NORTH, RANGE 12 W, OF THE 5TH P.M. Chickasaw COUNTY, IOWA
PREVIOUSLY RECORDED _____.



MONUMENT DESCRIPTION AND NARRATIVE Found PK nail

The information was found in the Chickasaw County Engineer's Tie Book. This section corner was referred to as sta. 388+92.2 on Chickasaw County Plans FN-289-1(1)--21-19.

All ties are GPS surveyed.

I AM NOT A REGISTERED LAND SURVEYOR UNDER THE LAWS OF THE STATE OF IOWA

JIM FOSTER CHICKASAW CO. DATE: 10/16/12