

Chickasaw Co. Recorder  
 Cindy Messersmith  
**Fee Book 2016-0811**  
 06/20/2016 @04:21PM  
 SEC: SEC COR CERT # Pages: 1  
 Book: Page: Total Fees: \$7.00

Prepared by & Return to: Herold - Reicks Surveying, 10 East Main Street, New Hampton, IA 50659, Ph. 641-394-2725

**UNITED STATES PUBLIC LAND SURVEY CORNER CERTIFICATE**

Land Survey Monuments situated in Section 19, Township 97 North, Range 12 West of the Fifth Principal Meridian, Chickasaw County, Iowa. 1., 2.) Previously unrecorded in the County Recorder's office.

This certificate is being prepared in compliance with Iowa Code Chapter 355.11 because:

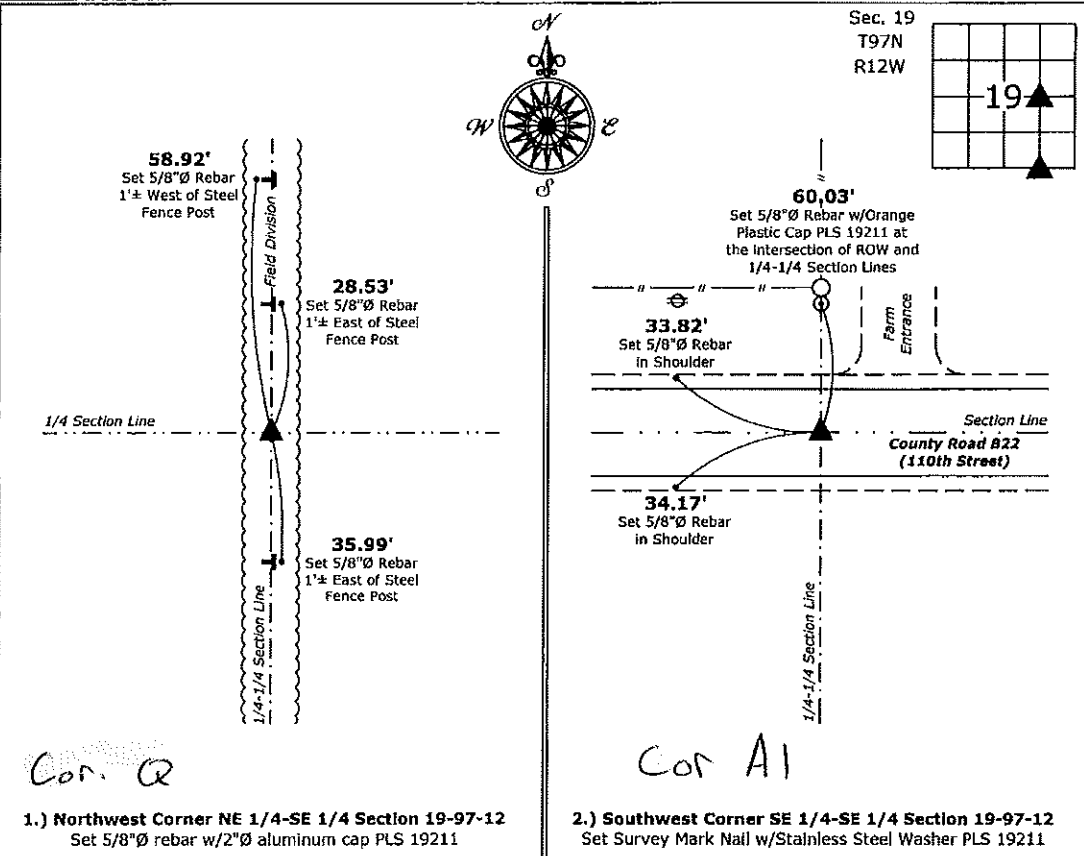
- 1 & 2  There is no certificate on file for this corner.  
 There are no longer three valid ties of record.  
 There are changes to reference ties of record.  
 There is change of monumentation of record.  
 To clarify description of record monument (ties).

**Monument Description and Remarks:**

- 1.) **Northwest Corner NE 1/4-SE 1/4:** Set 5/8"Ø rebar w/2"Ø aluminum cap PLS 19211 equidistant and on line between the East 1/4 Corner and Center of said Section.  
 2.) **Southwest Corner SE 1/4-SE 1/4:** Set Survey Mark Nail w/Stainless Steel Washer PLS 19211 equidistant and on line between the South 1/4 and Southeast Corners of said Section.

**PLAN - VIEW**

(Show a minimum of three reference ties to durable physical objects, relevant monuments and physical conditions that will enable recovery of the corner.)



I hereby certify that this land surveying document was prepared and the related survey work was performed by me or under my direct personal supervision and that I am a duly licensed Land Surveyor under the laws of the State of Iowa.  
*Kirk D. Reicks 6-17-16*  
 Kirk D. Reicks Date:  
 License number 19211  
 My license renewal date is December 31, 2016.  
 Sheets covered by this seal: Individual sheet only

List Corners to be Indexed

Corners	Section	Twp.	Range
NW-NE-SE	19	97	12
SW-SE-SE	19	97	12

Project Number: 2016-023  
 FB: Chickasaw 7, Pgs. 65-67

File: S:\\_CSD Projects\County Systems\CHICKASAW\CHICK-5\CHICK-5.dwg, 6/13/2016 8:38:50 AM