

Prepared by: Kyle A. Johnson Address: 1900 MEDICAL ARTS AVE S, SUITE 100 SARTELL MN Phone: 1-888-937-5150

UNITED STATES PUBLIC LAND SURVEY CORNER CERTIFICATE FOR

Land survey monuments situated in Section 31, Township 97 NORTH
 Range 12 WEST, of the Fifth Principal Meridian, CHICKASAW County, Iowa.
 Previously Recorded in _____ in County Recorder's Office.

(Show reason for preparing this certificate, the evidence and detailed procedures used in establishing the corner positions and monumentation found or placed.)

MONUMENT DESCRIPTION AND REMARKS:

THIS DOCUMENT IS INTENDED TO REPLACE INSTRUMENT #2022-1892 AS THERE WAS AN ERROR IN THE CORNER IDENTIFICATION.

WEST QUARTER: Westwood Professional Services found a 1/2" twisted bar 0.4' deep but no ties of previous record. Distances agree with previous surveys. Accepting corner location and set 3 ties. Filing corner record as there are no longer 3 valid ties of record.

SOUTHWEST CORNER: Westwood Professional Services found a 1" square bar 0.1' deep, 2 ties per 1994 corner record and engineers tie book and 1 tie of unknown origin. Accepting corner location. Filing corner record as there are changes to the reference ties of record.

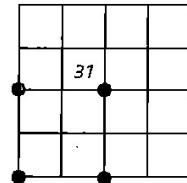
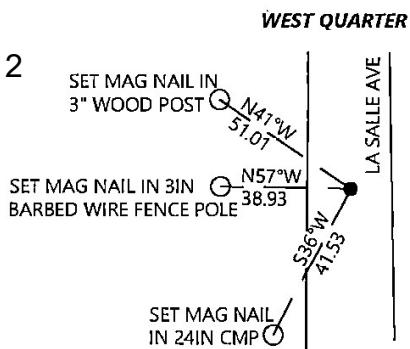
SOUTH QUARTER: Westwood Professional Services found a 1/2" rebar 0.2' deep and 2 ties of previous record. Accepting corner location and set 1 tie. Filing corner record as there are no longer 3 valid ties of record.

CENTER QUARTER: Westwood Professional Services found a 5/8" rebar with 2" aluminum cap LS15525 near the intersection of quarter lines and 2 ties per 2008 corner record. Accepting corner location and set 1 tie. Filing corner record as there are no longer 3 valid ties of record.

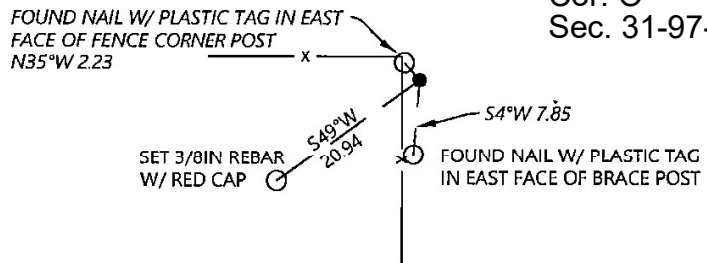
PLAN - VIEW

(Show a minimum of three reference ties to durable physical objects, relevant monuments and physical conditions that will enable recovery of the corner.)

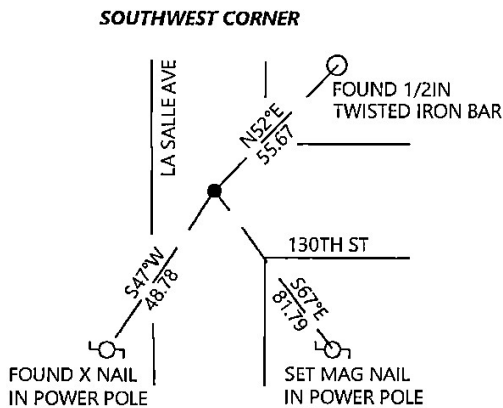
Cor. G
 Sec. 31-97-12



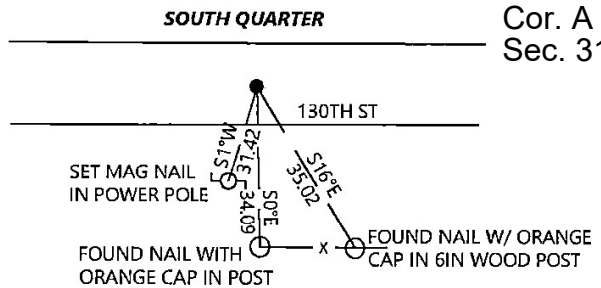
Cor. O
 Sec. 31-97-12



Cor. H
 Sec. 31-97-12



Cor. A
 Sec. 31-97-12



I hereby certify that this land surveying document was prepared and the related survey work was performed by me or under my direct personal supervision and that I am a duly licensed Land Surveyor under the laws of the state of Iowa.

Signature: Kyle Johnson Date: 01/03/2023
 Typed/Printed Name: Kyle A. Johnson
 License Number: 25725
 My license renewal date is December 31, 2024
 Pages or sheets covered by this seal: THIS SHEET

Corners to be Indexed

Corners	Section	Twp.	Range
WQ	31	97	12
SW	31	97	12
SQ	31	97	12
CQ	31	97	12