



Prepared by: Kyle A. Johnson Address: 1900 MEDICAL ARTS AVE S, SUITE 100 SARTELL MN Phone: 1-888-937-5150

UNITED STATES PUBLIC LAND SURVEY CORNER CERTIFICATE FOR

Land survey monuments situated in Section 30, Township 97 NORTH

Range 12 WEST, of the Fifth Principal Meridian, CHICKASAW County, Iowa.

Previously Recorded in \_\_\_\_\_ in County Recorder's Office.

(Show reason for preparing this certificate, the evidence and detailed procedures used in establishing the corner positions and monumentation found or placed.)

MONUMENT DESCRIPTION AND REMARKS:

**THIS DOCUMENT IS INTENDED TO REPLACE INSTRUMENT #2022-1891 AS THERE WAS AN ERROR IN THE CORNER IDENTIFICATION.**

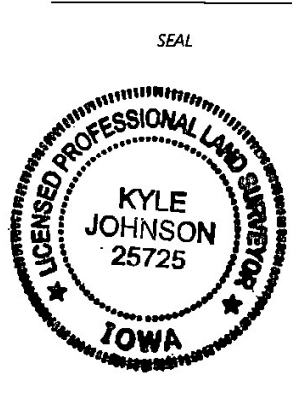
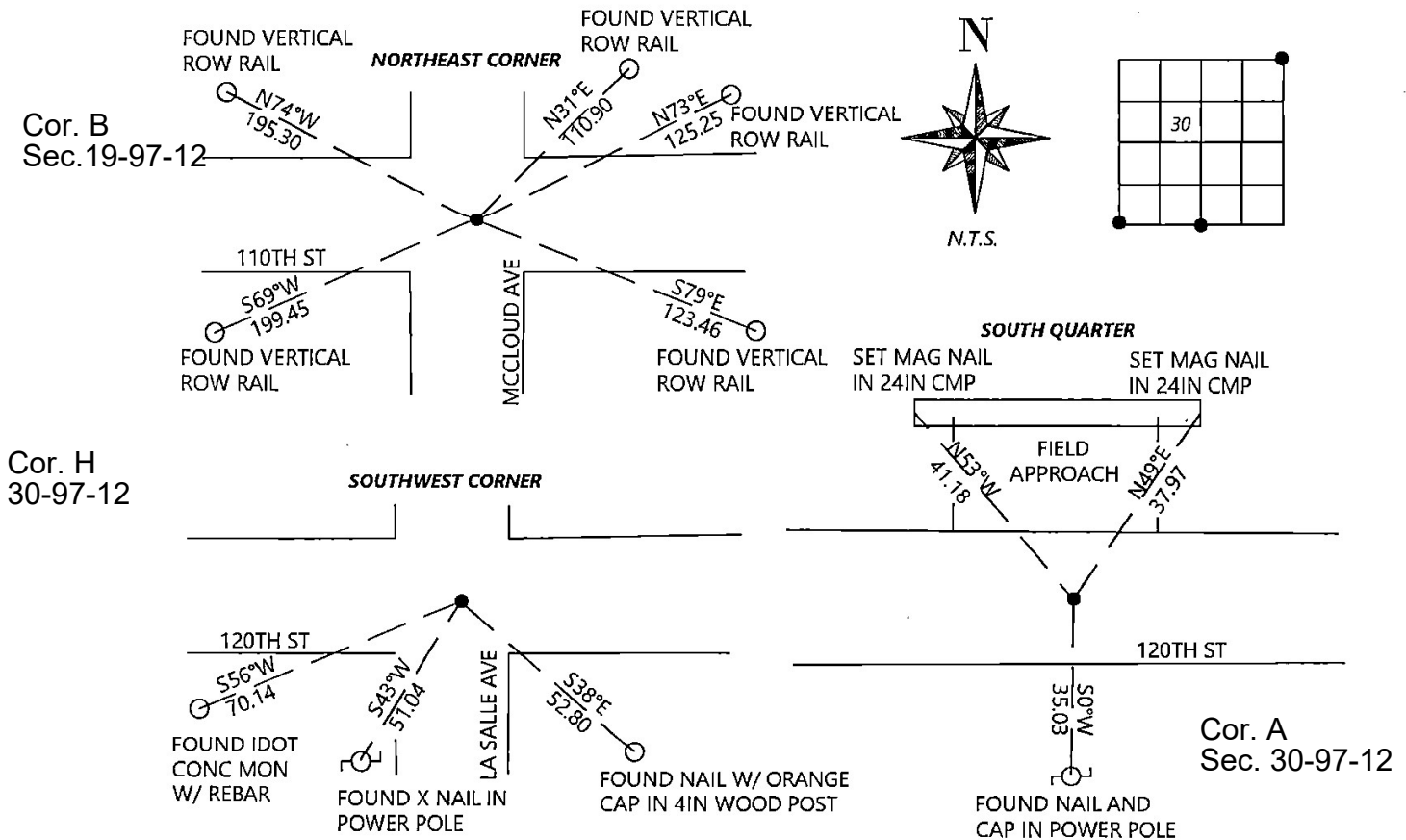
**NORTHEAST CORNER:** Westwood Professional Services found a survey nail with IDOT washer, 1 tie per 1922 tie book and 2016 corner record, and 4 ties of unknown origin. Accepting corner location. Filing corner record as there are changes to the reference ties of record.

**SOUTHWEST CORNER:** Westwood Professional Services found a 1/2" square twisted bar 0.8" deep, 2 ties from 2001 record and 1 tie of unknown origin. Accepting corner location. Filing corner record as there are no longer 3 valid ties of record.

**SOUTH QUARTER:** Westwood Professional Services found a 5/8" rebar with aluminum cap LS11442 0.4' deep and 1 tie of previous record. Accepting corner location and set 2 ties. Filing corner record as there are no longer 3 valid ties of record.

PLAN - VIEW

(Show a minimum of three reference ties to durable physical objects, relevant monuments and physical conditions that will enable recovery of the corner.)



I hereby certify that this land surveying document was prepared and the related survey work was performed by me or under my direct personal supervision and that I am a duly licensed Land Surveyor under the laws of the state of Iowa.

Kyle Johnson 01/03/2023  
 Signature Date  
 Typed/Printed Name: Kyle A. Johnson  
 License Number: 25725  
 My license renewal date is December 31, 2024  
 Pages or sheets covered by this seal: THIS SHEET

Corners to be Indexed

Corners	Section	Twp.	Range
NE	30	97	12
SW	30	97	12
SQ	30	97	12