



Prepared by & Return to: Herold - Recks Surveying, 10 East Main Street, New Hampton, IA 50659, Ph. 641-394-2725

United States Public Land Survey Corner Certificate

Land Survey Monument situated in
 Section 32, Township 97 North, Range 12 West of the Fifth Principal Meridian, Chickasaw County, Iowa.
 On file in Document #2018-0094 in the County Recorder's office.

This certificate is being prepared in compliance with Iowa Code Chapter 355.11 because:

- There is no certificate on file for this corner.
- There are no longer three valid ties of record.
- There are changes to reference ties of record.
- There is change of monumentation of record.
- To clarify description of record monument (ties).

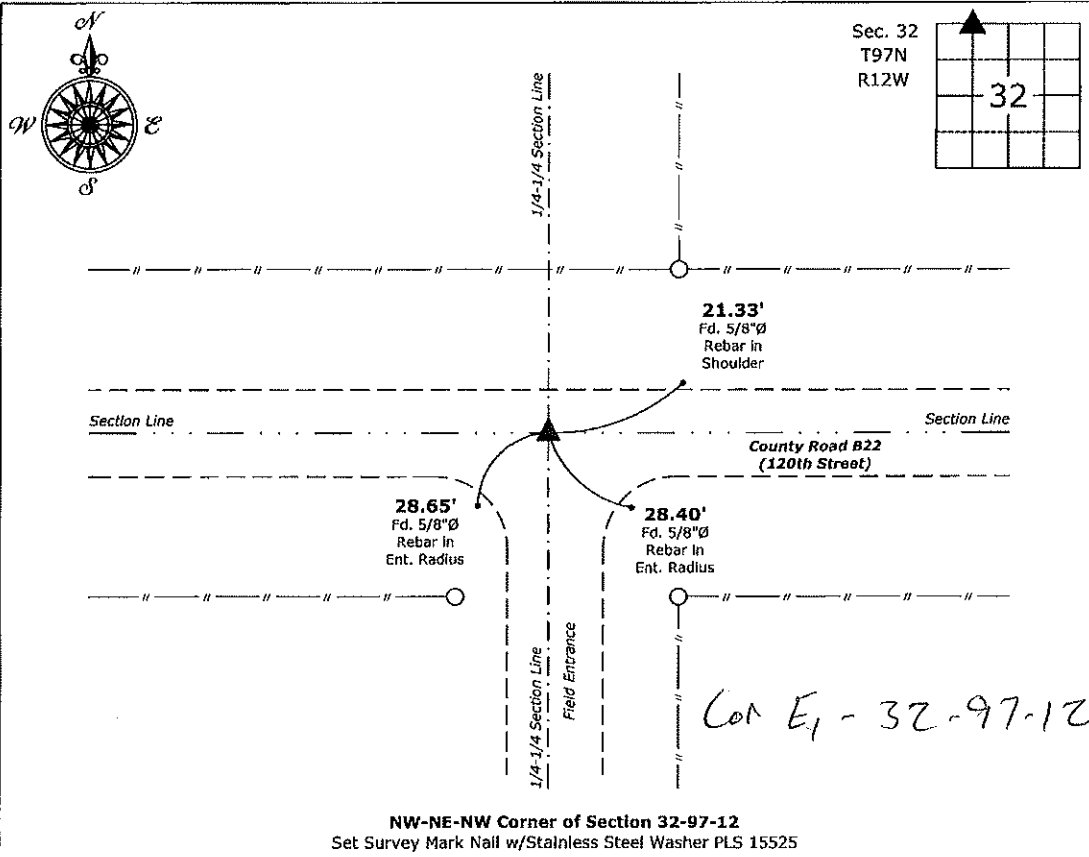
Monument Description and Remarks:

Northwest Corner NE 1/4-NW 1/4: Set Survey Mark Nail w/Stainless Steel Washer PLS 15525 equidistant and online between the Northwest and North 1/4 Corners of said Section.

Monument replaced after previous monument was covered over, set at record location.

Plan View

(Show a minimum of three reference ties to durable physical objects, relevant monuments and physical conditions that will enable recovery of the corner.)



NW-NE-NW Corner of Section 32-97-12
 Set Survey Mark Nail w/Stainless Steel Washer PLS 15525



I hereby certify that this land surveying document was prepared and the related survey work was performed by me or under my direct personal supervision and that I am a duly licensed Land Surveyor under the laws of the State of Iowa.

Paul R. Herold 10-5-20
 Paul R. Herold Date:

License number 15525
 My license renewal date is December 31, 2020.
 Sheets covered by this seal: Individual sheet only

List Corner to be Indexed

Corner	Section	Twp.	Range
NW-NE-NW	32	97	12

Project Number: 2017-022
 FB: Chickasaw 8, Pgs. 53-56

Prepared by & Return to: Herold - Reicks Surveying, 10 East Main Street, New Hampton, IA 50658, Ph. 641-394-2725

United States Public Land Survey Corner Certificate

Land Survey Monument situated in
 Section 32, Township 97 North, Range 12 West of the Fifth Principal Meridian, Chickasaw County, Iowa.
 Not of file in the County Recorder's office.

This certificate is being prepared in compliance with Iowa Code Chapter 355.11 because:

- There is no certificate on file for this corner.
- There are no longer three valid ties of record.
- There are changes to reference ties of record.
- There is change of monumentation of record.
- To clarify description of record monument (ties).

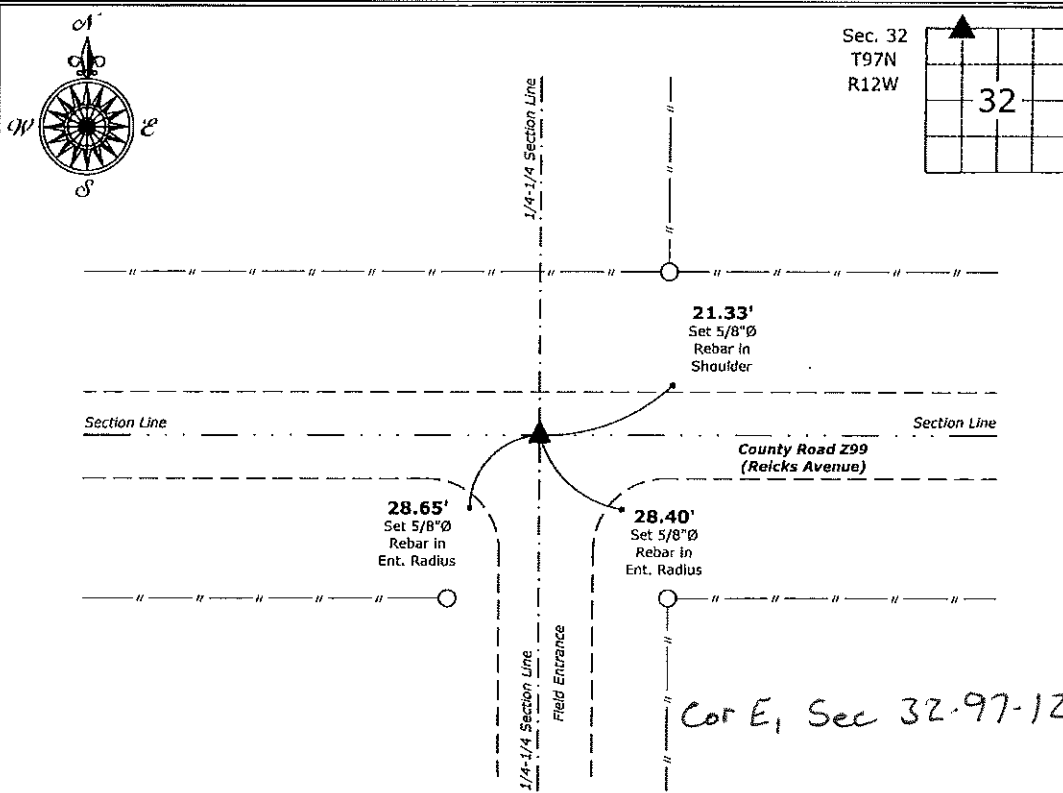
Monument Description and Remarks:

Northwest Corner NE 1/4-NW 1/4: Set 5/8"Ø rebar w/2"Ø aluminum cap PLS 15525 equidistant and online between the Northwest and North 1/4 Corners of said Section.

An extensive search of all of the records within the County offices was performed as part of the section corner recovery, No records were located of the perpetuation of a monument at this corner.

Plan View

(Show a minimum of three reference ties to durable physical objects, relevant monuments and physical conditions that will enable recovery of the corner.)



NW-NE-NW Corner of Section 32-97-12
 Set 5/8"Ø rebar w/2"Ø aluminum cap PLS 15525



I hereby certify that this land surveying document was prepared and the related survey work was performed by me or under my direct personal supervision and that I am a duly licensed Land Surveyor under the laws of the State of Iowa.

Paul R. Herold 1-16-18
 Paul R. Herold Date:
 License number 15525
 My license renewal date is December 31, 2018.
 Sheets covered by this seal: Individual sheet only

List Corner to be Indexed			
Corner	Section	Twp.	Range
NW-NE-NW	32	97	12
Project Number: 2017-022			
FB: Chickasaw 8, Pgs. 53-56			