

Chickasaw Co. Recorder  
 Cindy Messersmith  
**Fee Book 2008-1522**  
 08/06/2008 @1005AM  
 SCC SEC COR CERT  
 Book: Page: # Pages: 1  
 Total Fees: \$7.00

Corner B:  
 Section 29-97-12  
 As referred to in  
 Engr. Tie Book

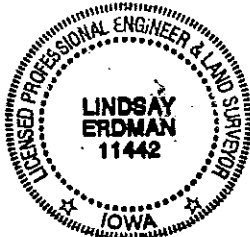
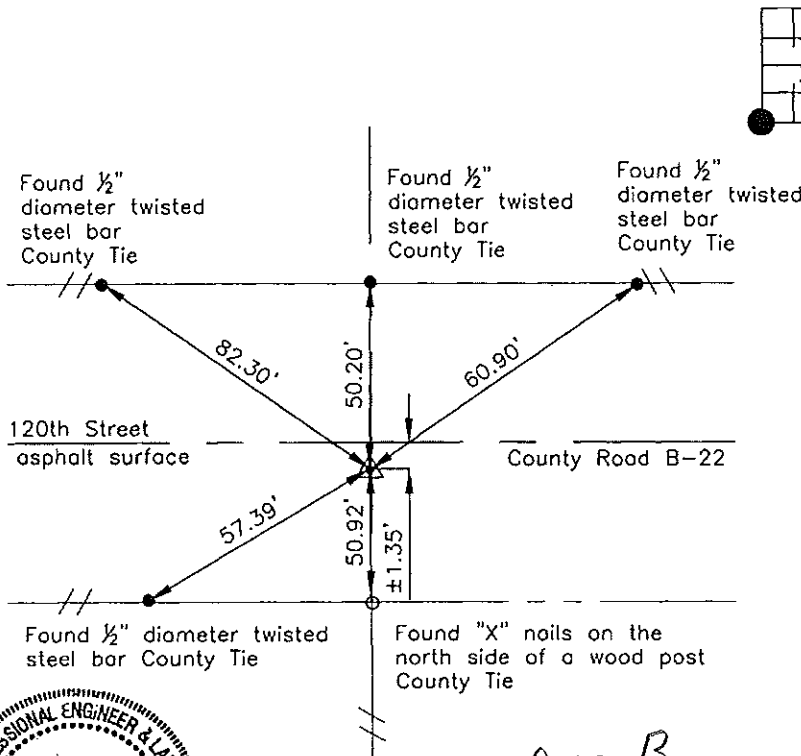
Prepared by: Erdman Engineering, P.C., 708 Commerce Drive, P.O. Box 246, Decorah, Iowa 52101 (563) 382-4194

United States Public Land Survey Corner Certificate  
 of

Land Survey Monuments situated in Section 28, Township 97, Range 12 West of  
 the 5th Principal Meridian in Chickasaw County, Iowa. Previously recorded in  
does not apply in the county Recorder's Office.

Monument Description and Remarks: This certificate is prepared in accordance with  
 Section 193C of the Code of Iowa. No previous certificate has been filed for this  
 corner location. Based on Chickasaw County Engineer's Reference Ties we found four 1/2"  
 diameter steel bars and a set of "X" nails that had been used previously as tie  
 markers from these ties we found a P.K. nail 1.35' south of the centerline joint of the  
 county road and in line with the fence line running south. Chickasaw County Engineer's  
 Reference ties show that an I.P. and a hub in line with fence to south were found in  
 1922 and in 1949 and raised with I.P. in 1959, retied in 1965, asphalt surfaced in  
 1966, set cement nail in 1967 which was used in 1974, 1988 and 1990. We used the  
 P.K. nail as the SW corner of Section 28, Township 97 North, Range 12 West

Plan-View



Cor B  
 29-97-12

I hereby certify that this land surveying document  
 was prepared and the related survey work was  
 performed by me or under my direct personal  
 supervision and that I am a duly licensed Land  
 Surveyor under the laws of the State of Iowa.

Signature: *Lindsay Erdman*  
 Lindsay Erdman, P.E. and P.L.S. Iowa License Number 11442

Date: 8/1/08

My license renewal date is December 31, 2008

Corner(s) to be Indexed

Corner	Section	Township	Range
SW	28	97	12