

Corner A
 Section 28-97-12
 As referred to in
 Engr. Tie Book

Prepared by: Erdman Engineering, P.C. 708 Commerce Drive, P.O. Box 246, Decorah, Iowa 52101
 Phone (319)382-4194, Fax (319)382-3623

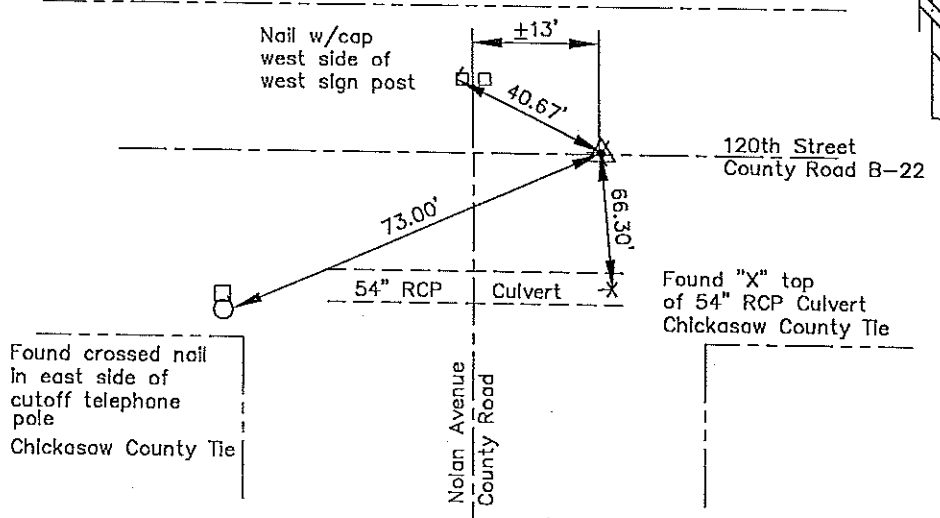
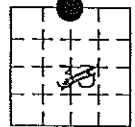
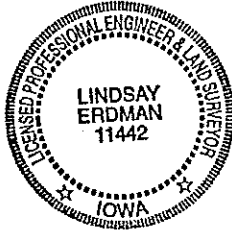
United States Public Land Survey Corner Certificate

28 of

Land Survey Monuments situated in Section 28 Township 97 Range 12 of the Fifth Principle Meridian, Chickasaw County, Iowa. Previously recorded in does not apply in County Recorders Office.

Monument Description and Remarks: This certificate is prepared in accordance with Section 355.11 of the 1995 Code of Iowa. No previous certificate has been filed for this corner location. Based on Chickasaw County Engineer's Reference Ties we found an "X" cut in the top of a 54" RCP, and a set of crossed nails in a cut off telephone pole, based on these ties and a recorded distance of 2258.81 feet from the NE Corner to the N 1/4 Corner we set a P.K. nail at the N 1/4 Corner of Sec. 33-197N-R12W. The nail falls at the approximate center line of 120th Street, and ±13 feet east of the center line of Nolan Avenue.

Plan-View



Found crossed nail in east side of cutoff telephone pole
 Chickasaw County Tie

Found "X" top of 54" RCP Culvert
 Chickasaw County Tie

Cor. A
 28-97-12

I hereby certify that the survey work was completed and this certificate was prepared by me or under my direct supervision and that I am a duly registered land surveyor under the laws of the State of Iowa.

Signature: *Lindsay Erdman*
 Lindsay Erdman, P.E. and L.S.
 Date: 1/7/99 Reg. No. 11442
 My license renewal date is December 31, 2000

Corners	List Corners to be Indexed		
	Section	Twp.	Range
N 1/4	33	97	12

m:\c:\legof\act\chick\08180\08180n4