

Corner A:
Section 28-97-12
As referred to in
Engr Tie Book.

Prepared by: Erdman Engineering, P.C. 708 Commerce Drive, P.O. Box 246, Decorah, Iowa 52101
Phone (319)382-4194, Fax (319)382-3623

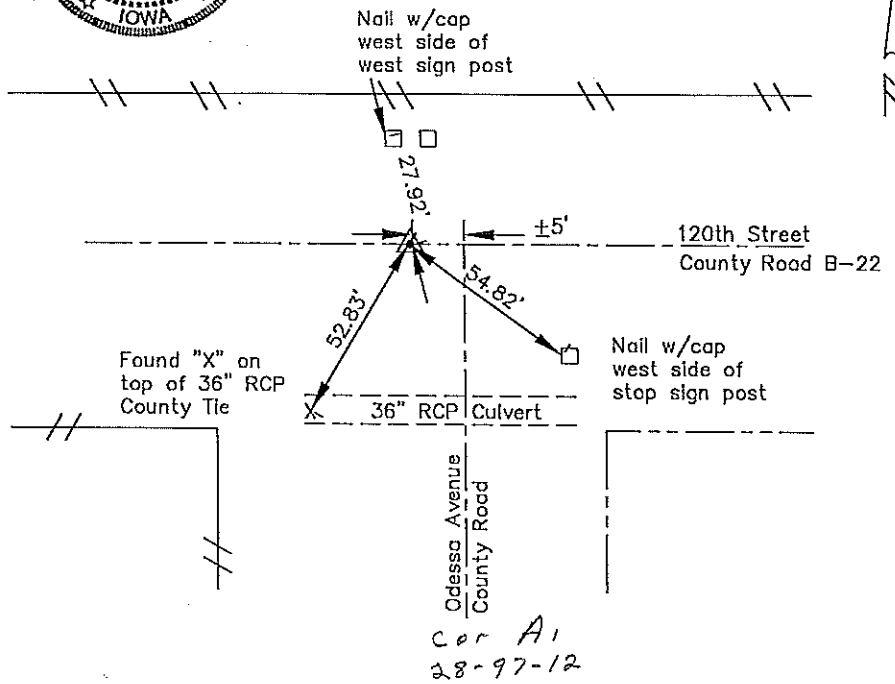
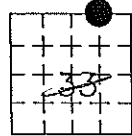
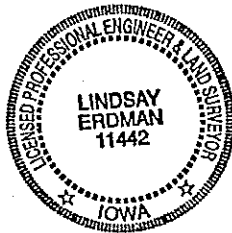
United States Public Land Survey Corner Certificate

28 of

Land Survey Monuments situated in Section 33 Township 97 Range 12 of the Fifth Principle Meridian, Chickasaw County, Iowa. Previously recorded in does not apply in County Recorders Office.

Monument Description and Remarks: This certificate is prepared in accordance with Section 355.11 of the 1995 Code of Iowa. No previous certificate has been filed for this corner location. Based on a plat recorded in Book 112 page 163 in the Chickasaw County Recorder's Office we set a P.K. nail in the A.C.C. pavement on line and midway between the NE Corner and N 1/4 Corner of the NNE 1/8 Corner of Sec. 33-T97N-R12W. The nail falls in the approximate center line of 120th Street and approximately 5 feet west of the centerline of Odessa Avenue and matches the one remaining tie from County Engineer's Records.

Plan-View



Cor A1
28-97-12

I hereby certify that the survey work was completed and this certificate was prepared by me or under my direct supervision and that I am a duly registered land surveyor under the laws of the State of Iowa.

Signature Lindsay Erdman
Lindsay Erdman, P.E. and L.S.

Date: 1/7/99 Reg. No. 11442

My license renewal date is December 31, 2000

List Corners to be Indexed			
Corners	Section	Twp.	Range
NNE 1/8	33	97	12