

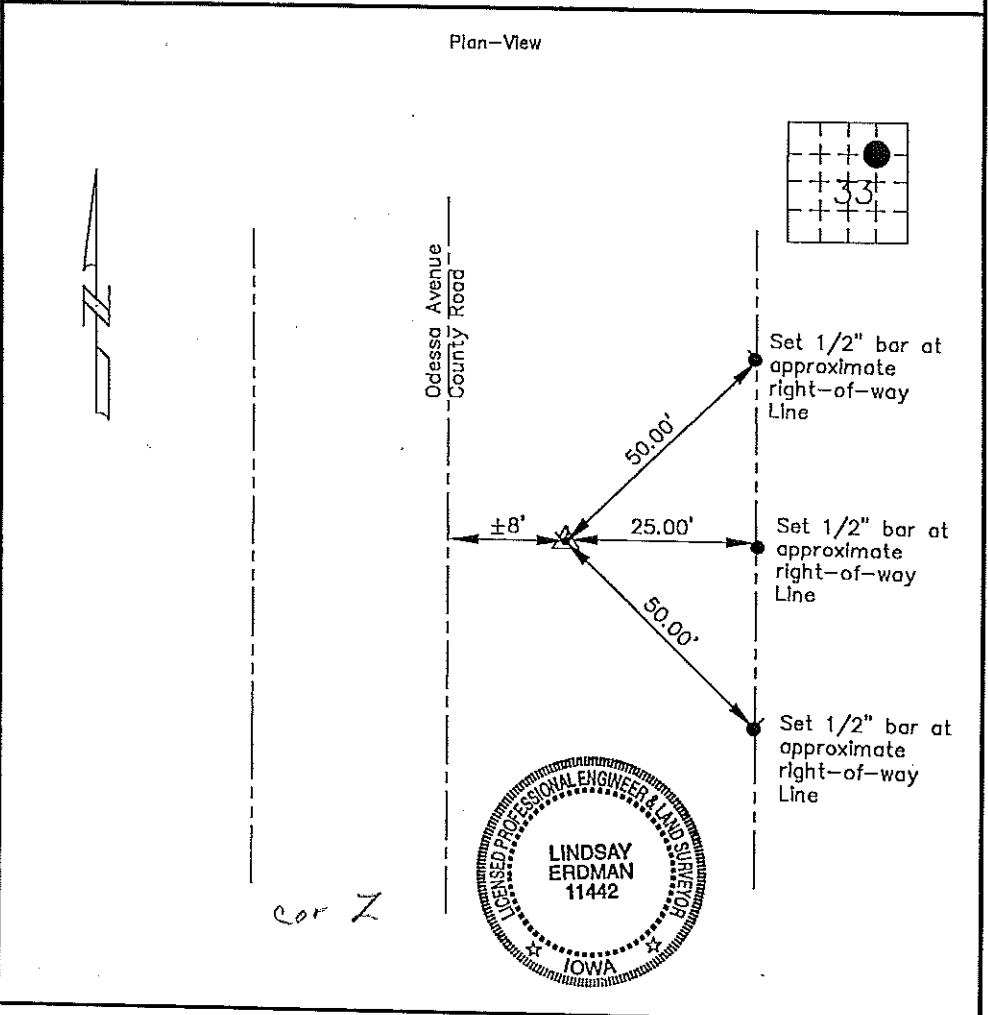
Prepared by: Erdman Engineering, P.C. 708 Commerce Drive, P.O. Box 246, Decorah, Iowa 52101  
 Phone (319)382-4194, Fax (319)382-3623

### United States Public Land Survey Corner Certificate

of

Land Survey Monuments situated in Section, 33 Township, 97 Range, 12 of the Fifth Principle Meridian, Chickasaw County, Iowa. Previously recorded in does not apply in County Recorders Office.

Monument Description and Remarks: This certificate is prepared in accordance with Section 355.11 of the 1995 Code of Iowa. No previous certificate has been filed for this corner location. Based on Chickasaw County Engineer's Reference Ties and a plat recorded in Book 112 page 163 in the Chickasaw County Recorder's Office, we found a "1" bar w/cap at the NE 1/16 Corner of Sec. 33-197N-R12W. The "1" bar w/cap was bent, we replaced it with a 1/2" bar w/cap Iowa RLS #11442.



I hereby certify that the survey work was completed and this certificate was prepared by me or under my direct supervision and that I am a duly registered land surveyor under the laws of the State of Iowa.

Signature [Signature]  
 Lindsay Erdman, P.E. and L.S.

Date: 1/7/99 Reg. No. 11442

My license renewal date is December 31, 2000

List Corners to be Indexed			
Corners	Section	Twp.	Range
NE 1/16	33	97	12

m:\c\vegol\sect\chick\98169\98169.n10