

2006-2258

TeKIPPE ENGINEERING, P.C., 128 South Vine Street, West Union, Iowa 52175 Phone (563) 422-5131

UNITED STATES PUBLIC LAND SURVEY CORNER CERTIFICATE

OF

Land Survey Monuments situated in Section 34, Township 97 North, Range 12 West of the Fifth Principal Meridian, Chickasaw County, Iowa.  
 Previously recorded in none in County Recorder's Office.  
 (book, page, document number, etc.)

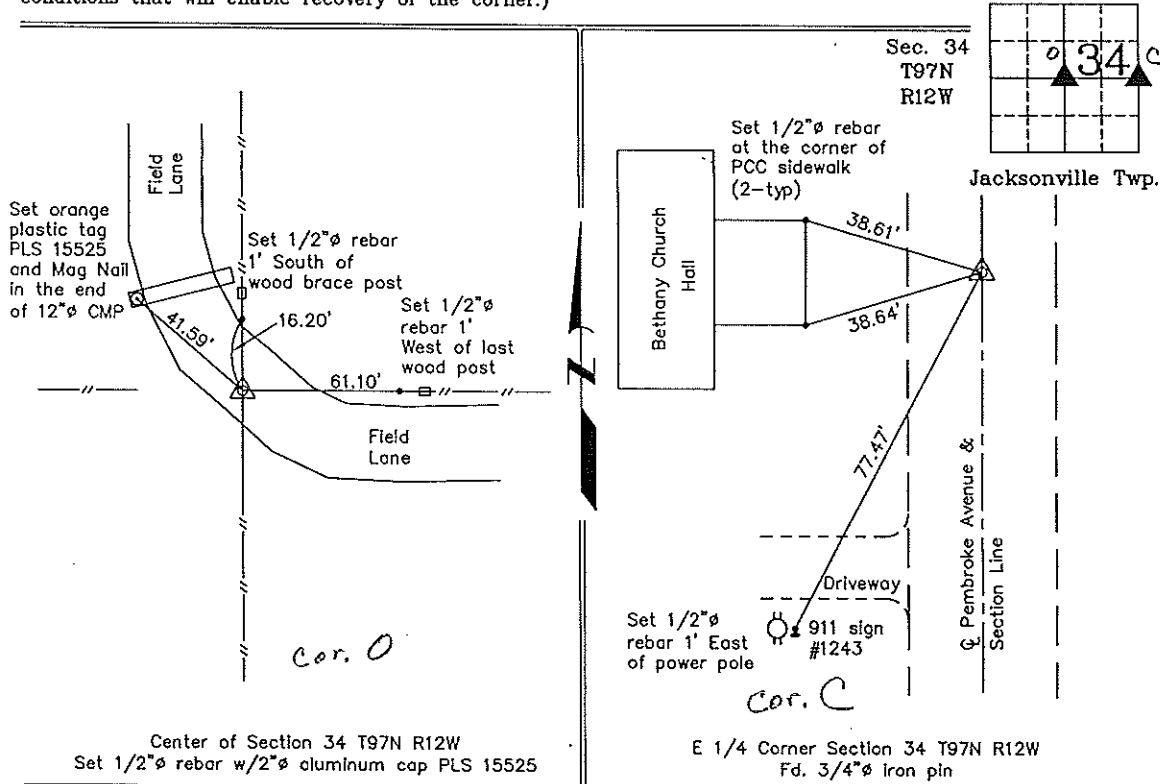
(Show reason for preparing this certificate, the evidence and detailed procedures used in establishing the corner positions and monumentation found or placed.)

Monument Description and Remarks: Center of Section 34 T97N R12W: Set 1/2"Ø rebar with 2"Ø aluminum cap PLS 15525 at the intersection of possession line fences, distance from the N 1/4 checks with County Engineer's office field notes, Jacksonville Township, Section 34.

E 1/4 Corner Section 34 T97N R12W: Found 3/4"Ø iron pin with information obtained from the County Engineer's office, in Jacksonville Township notes, Section 34, Corner "C".

PLAN - VIEW

(Show a minimum of three reference ties to durable physical objects, relevant monuments and physical conditions that will enable recovery of the corner.)



I hereby certify that this land surveying document was prepared and the related survey work was performed by me or under my direct personal supervision and that I am a duly licensed Land Surveyor under the laws of the State of Iowa.  
 Paul R. Herold 10-31-06  
 Paul R. Herold Date  
 License number 15525  
 My license renewal date is December 31, 2006.  
 Sheets covered by this seal: Individual

List Corners to be Indexed			
Corners	Section	Twp.	Range
Center	34	97N	12W
E 1/4	34	97N	12W

Project Number 06282.15  
 FB 48M, PGS. 26-28  
 X:\Section Corners\Sec. 34\34-97-12mo.dwg