

UNITED STATES PUBLIC LAND SURVEY CORNER CERTIFICATE

OF

Land Survey Monuments situated in Section 27, Township 9.7 NORTH, Range 12 WEST, of the Fifth Principal Meridian, CHICKASAW County, Iowa. Previously recorded in (NONE) in County Recorder's Office.

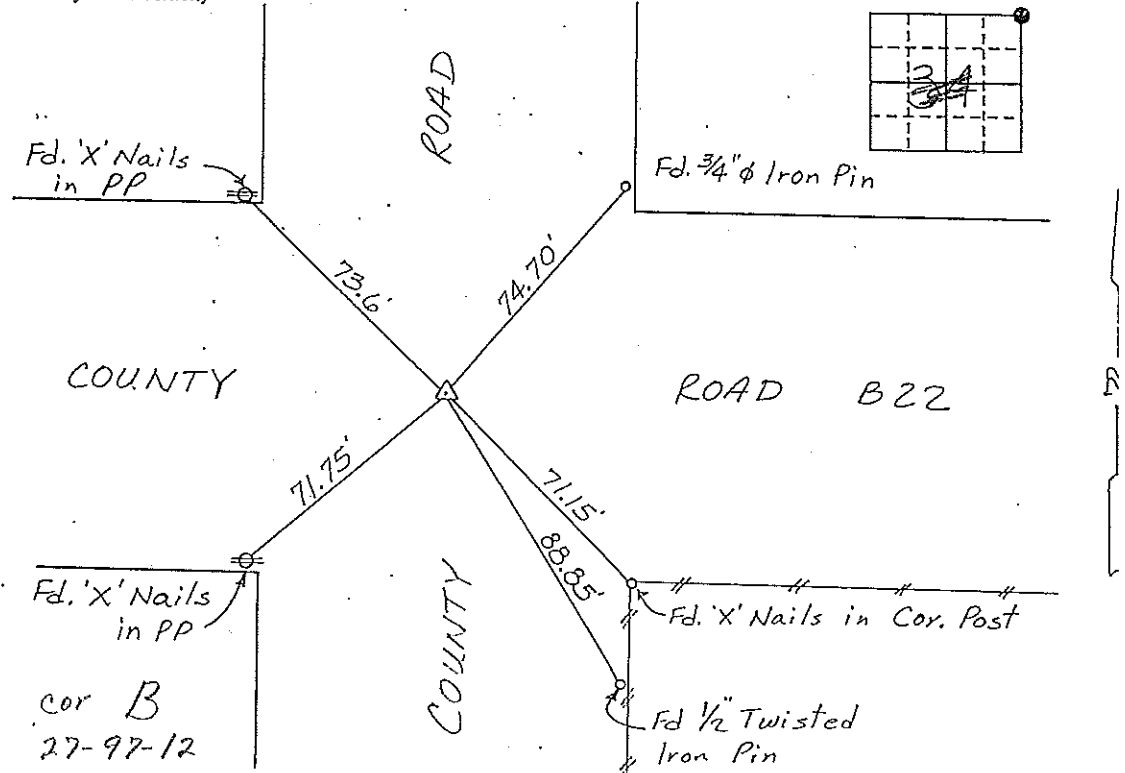
Corner B:
Section 27-97-12
As referred to in
Engr. Trc Book

(Show reason for preparing this certificate, the evidence and detailed procedures used in establishing the corner positions and monumentation found or placed.)

Monument Description and Remarks: NE CORNER, SECTION 34-T97N-R12W:
FOUND PK NAIL IN ASPHALT.

PLAN - VIEW

(Show a minimum of three reference ties to durable physical objects, relevant monuments and physical conditions that will enable recovery of the corner.)



NE CORNER, SECTION 34-T97N-R12W

I hereby certify that the survey work was completed and this certificate was prepared by me or under my direct personal supervision and that I am a duly registered land surveyor under the laws of the state of Iowa.

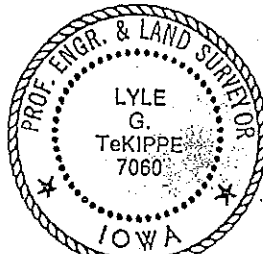
Signature: Lyle G. TeKippe
Name typed or printed: Lyle G. TeKippe

Date: 11-24-92 Reg. No. 7060

My Registration Expires December 31, 1992

Corners	List Corners to be Indexed Section	Twp	Range
NE	34	97N	12W

SEAL



DOCUMENT No. 01272 FILED FOR RECORD THE 9th DAY OF December 1992 AT 9:27 O'CLOCK A.M. BOOK 151 (deeds) PAGE 7

RECORDING FEE \$ 5.00 STATE OF IOWA, CHICKASAW COUNTY, Recd. Mary C. Murray
By: MARY C. MURRAY

TRANSFER FEE \$ _____