

Prepared by & Return to: Harold - Reicks Surveying, 10 East Main Street, New Hampton, IA 50659, Ph. 641-394-2725

UNITED STATES PUBLIC LAND SURVEY CORNER CERTIFICATE

Land Survey Monuments situated in Section 26, Township 97 North, Range 12 West of the Fifth Principal Meridian, Chickasaw County, Iowa. 1.&2.) Not previously recorded in the County Recorder's office.

This certificate is being prepared in compliance with Iowa Code Chapter 355.11 because:

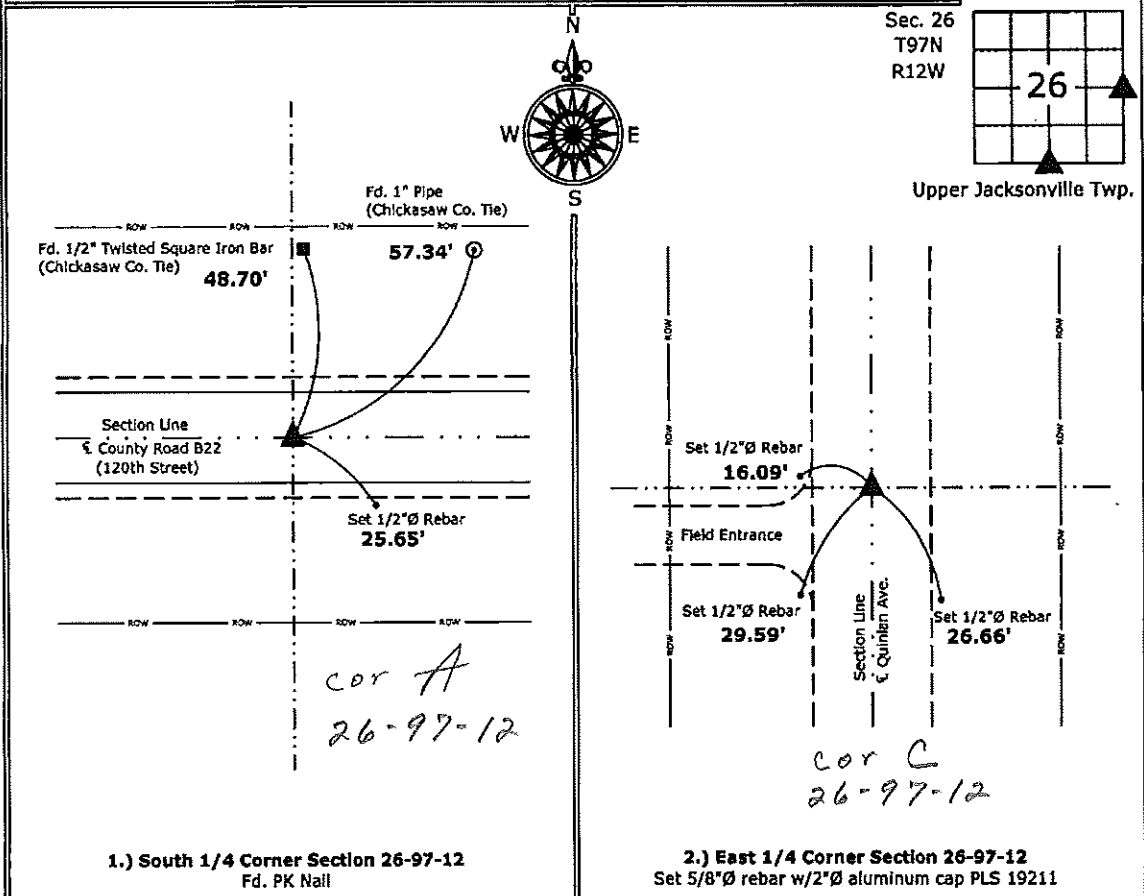
- There is no certificate on file for this corner.
- There are no longer three valid ties of record.
- There are changes to reference ties of record.
- There is change of monumentation of record.
- To clarify description of record monument (ties).

Monument Description and Remarks:

- 1.) **South 1/4 Corner:** Fd. PK nail with information obtained from the County engineer's office.
- 2.) **East 1/4 Corner:** Set 5/8"Ø rebar with 2"Ø aluminum cap PLS 19211 at the intersection of the Centerline of Quinlan Avenue and a division line from the West and East.

PLAN - VIEW

(Show a minimum of three reference ties to durable physical objects, relevant monuments and physical conditions that will enable recovery of the corner.)



1.) South 1/4 Corner Section 26-97-12
Fd. PK Nail

2.) East 1/4 Corner Section 26-97-12
Set 5/8"Ø rebar w/2"Ø aluminum cap PLS 19211



I hereby certify that this land surveying document was prepared and the related survey work was performed by me or under my direct personal supervision and that I am a duly licensed Land Surveyor under the laws of the State of Iowa.

Kirk D. Reicks 11-9-11
 Kirk D. Reicks Date:

License number 19211
 My license renewal date is December 31, 2012.
 Sheets covered by this seal: Individual sheet only

List Corners to be Indexed

Corners	Section	Twp.	Range
S 1/4	26	97	12
E 1/4	26	97	12

Project Number: 2011-041

FB: Chickasaw County 3, Pgs. 69-70