

Prepared by & Return to: Herold - Reicks Surveying, 10 East Main Street, New Hampton, IA 50659, Ph. 641-394-2725

### UNITED STATES PUBLIC LAND SURVEY CORNER CERTIFICATE

Land Survey Monuments situated in Section **35**, Township **97** North, Range **12** West of the Fifth Principal Meridian, **Chickasaw** County, Iowa. Not previously recorded in the County Recorder's office.

This certificate is being prepared in compliance with Iowa Code Chapter 355.11 because:

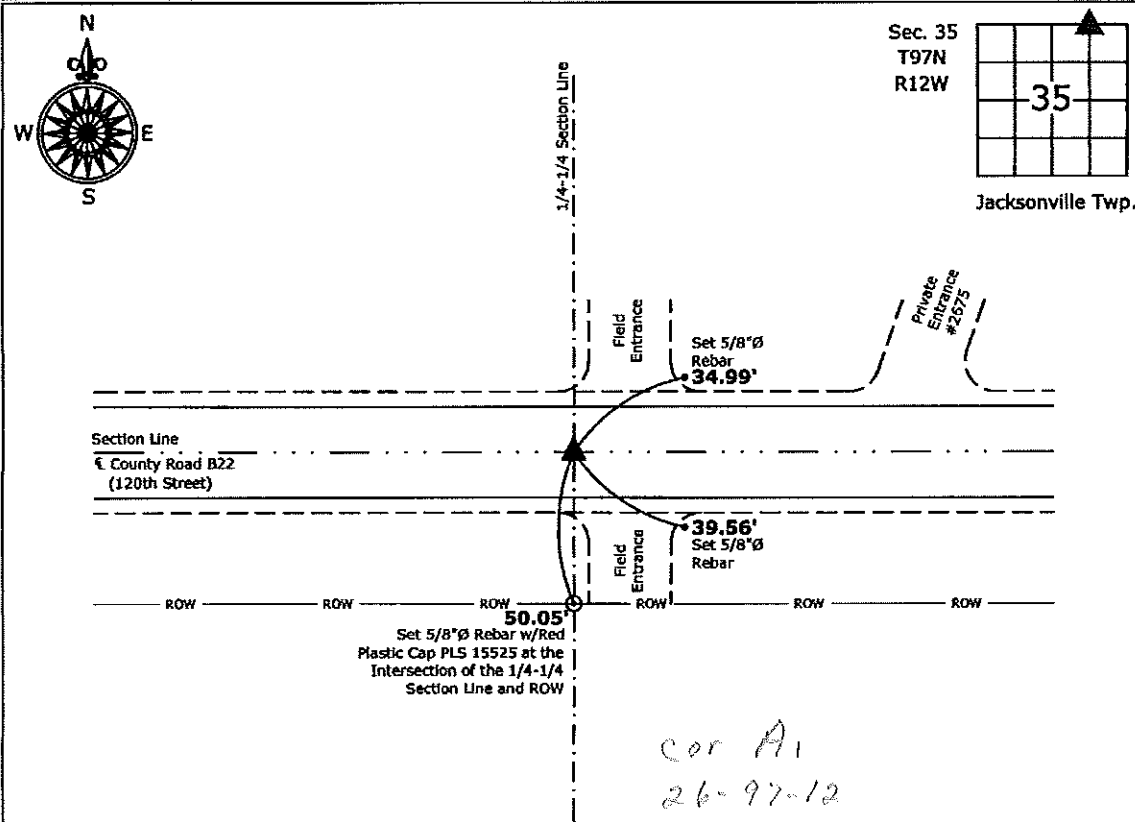
- There is no certificate on file for this corner.
- There are no longer three valid ties of record.
- There are changes to reference ties of record.
- There is change of monumentation of record.
- To clarify description of record monument (ties).

Monument Description and Remarks:

**Northeast Corner NW 1/4 - NE 1/4:** Set 5/8"Ø rebar with 2"Ø aluminum Cap PLS 15525 equidistant and online between the North 1/4 and Northeast Corners of Section 35.

#### PLAN - VIEW

(Show a minimum of three reference ties to durable physical objects, relevant monuments and physical conditions that will enable recovery of the corner.)



**Northeast Corner NW 1/4 - NE 1/4 Section 35-97-12**  
 Set 5/8"Ø rebar w/2"Ø aluminum cap PLS 15525



I hereby certify that this land surveying document was prepared and the related survey work was performed by me or under my direct personal supervision and that I am a duly licensed Land Surveyor under the laws of the State of Iowa.

*Paul R. Herold* 6-26-12  
 Paul R. Herold Date:

License number 15525

#### List Corners to be Indexed

Corners	Section	Twp.	Range
NE-NW-NE	35	97	12