

Prepared by & Return to Herold - Reicks Surveying, 10 East Main Street, New Hampton, IA 50658, Ph. 641-394-2725

UNITED STATES PUBLIC LAND SURVEY CORNER CERTIFICATE

Land Survey Monuments situated in Section 35, Township 97 North, Range 12 West of the Fifth Principal Meridian, Chickasaw County, Iowa. 1., 2.) Not previously recorded in the County Recorder's office.

This certificate is being prepared in compliance with Iowa Code Chapter 355.11 because:

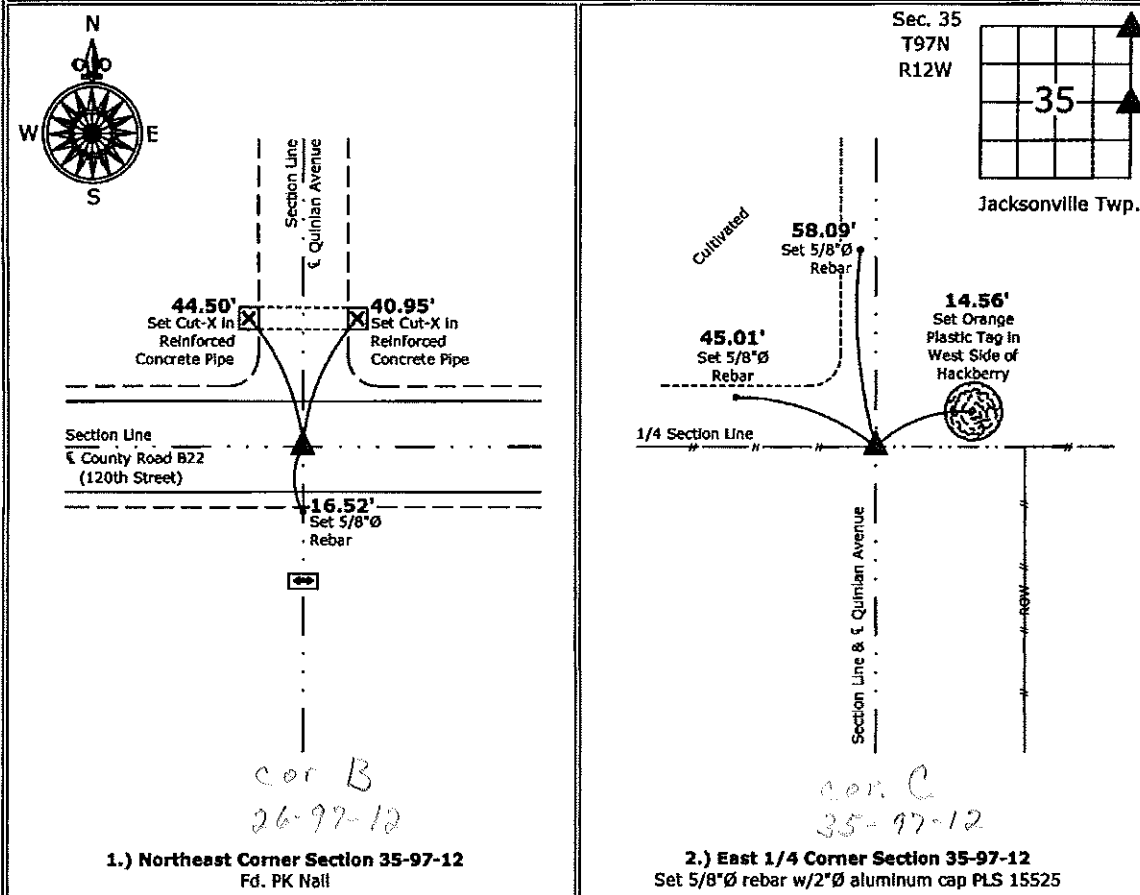
- 1 & 2 There is no certificate on file for this corner.
 There are no longer three valid ties of record.
 There are changes to reference ties of record.
 There is change of monumentation of record.
 To clarify description of record monument (ties).

Monument Description and Remarks:

- 1.) **Northeast Corner:** Found PK Nail from Information obtained from the County Engineers office.
- 2.) **East 1/4 Corner:** Set 5/8"Ø rebar w/2"Ø aluminum cap PLS 15525 on the Easterly extension of a possession line fence from the West and 33.00' West of a Right of Way fence to the South.

PLAN - VIEW

(Show a minimum of three reference ties to durable physical objects, relevant monuments and physical conditions that will enable recovery of the corner.)



1.) **Northeast Corner Section 35-97-12**
 Fd. PK Nail

2.) **East 1/4 Corner Section 35-97-12**
 Set 5/8"Ø rebar w/2"Ø aluminum cap PLS 15525



I hereby certify that this land surveying document was prepared and the related survey work was performed by me or under my direct personal supervision and that I am a duly licensed Land Surveyor under the laws of the State of Iowa.

Paul R. Herold 6-26-12
 Paul R. Herold Date:
 License number 15525

List Corners to be Indexed			
Corners	Section	Twp.	Range
NE	35	97	12
E 1/4	35	97	12