

Prepared by: Erdman Engineering, P.C., 708 Commerce Drive, P.O. Box 246, Decorah, Iowa, (563)382-4194

UNITED STATES PUBLIC LAND SURVEY CORNER CERTIFICATE  
 OF

Land Survey Monuments situated in Section 36, Township 97N North, Range 12W West, of the Fifth Principal Meridian, Chickasaw County, Iowa, Previously recorded in does not apply in the County Recorder's Office.

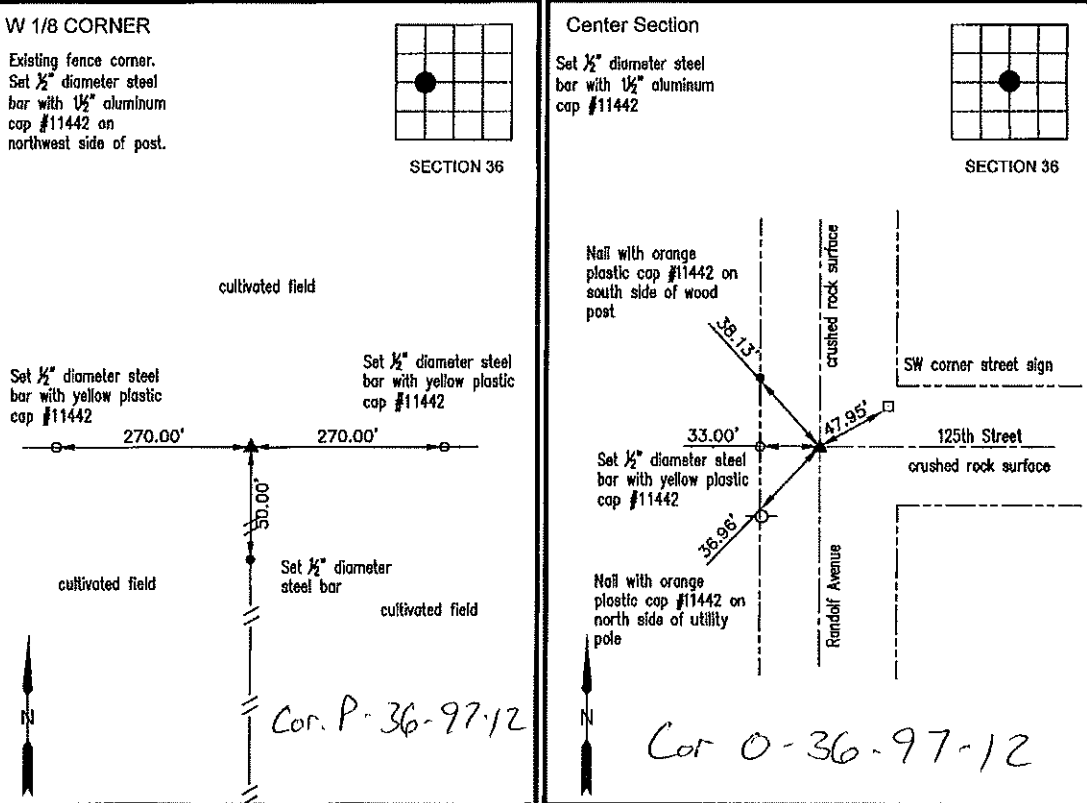
Monument Description and Remarks:

This certificate is prepared in accordance with Section 355.11 of the Code of Iowa. No previous certificates have been filed for these corner locations.

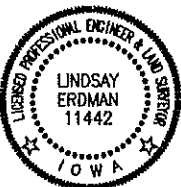
W 1/8 Corner: We found no record of the W 1/8 Corner being set. We found no evidence of a monument in the field other than an existing fence corner with a fence line running south and remnants of a fence running east and west. We used the fence corner as the W 1/8 Corner of Section 36, Township 97 North, Range 12 West. We set a 1/2" diameter steel bar with 1 1/2" aluminum cap #11442 on the northwest side of the post.

Center Section: Chickasaw County Engineer's Reference Ties show that a stone was found in 1928 and an iron pin was placed. We searched for the tie markers previously set. We did not find any as they appear to have been removed when County Road Right-of-Way widened. We made a magnetic locator search of an approximate 20' diameter area at the centerline of the county and on the extension of the fence line from the west for the iron pin. We did not find the monument as it appears to have been removed when county road was extended to the south. We found the W 1/4 Corner, N 1/4 Corner and the S 1/4 Corner. We set the W 1/8 Corner. We set a 1/2" diameter steel bar with 1 1/2" aluminum cap #11442 at the intersection of the line from the W 1/4 through the W 1/4 and the N 1/4 to the S 1/4 Corner as the Center of Section 36, Township 97 North, Range 12 West.

PLAN-VIEW  
 (NOT TO SCALE)



I hereby certify that this land surveying document was prepared and the related survey work was performed by me or under my direct personal supervision and that I am a duly licensed Land Surveyor under the laws of the State of Iowa.



*Lindsay Erdman* 10/14/19  
 Date

Lindsay Erdman, P.E. & P.L.S.  
 Licensed Professional Land Surveyor  
 Iowa License Number 11442  
 My License renewal date is December 31, 2020

Pages or sheets covered by this seal: THIS SHEET ONLY

List Corner(s) to be Indexed

Corner(s)	Section	Township	Range
W 1/8	36	97N	12W
C.S.	36	97N	12W

**ERDMAN ENGINEERING, P.C.**  
 CIVIL ENGINEERING & LAND SURVEYING  
 Decorah, Iowa