



Prepared by & Return to: Herald - Reicks Surveying, 10 East Main Street, New Hampton, IA 50659, Ph. 641-394-2725

Corrective United States Public Land Survey Corner Certificate

Land Survey Monument situated in
 Section **36**, Township **97** North, Range **12** West of the Fifth Principal Meridian, **Chickasaw** County, Iowa.
 Not on file in the County Recorder's Office.

This certificate is being prepared in compliance with Iowa Code Chapter 355.11 because:

- There is no certificate on file for this corner.
- There are no longer three valid ties of record.
- There are changes to reference ties of record.
- There is change of monumentation of record.
- To clarify description of record monument (ties).

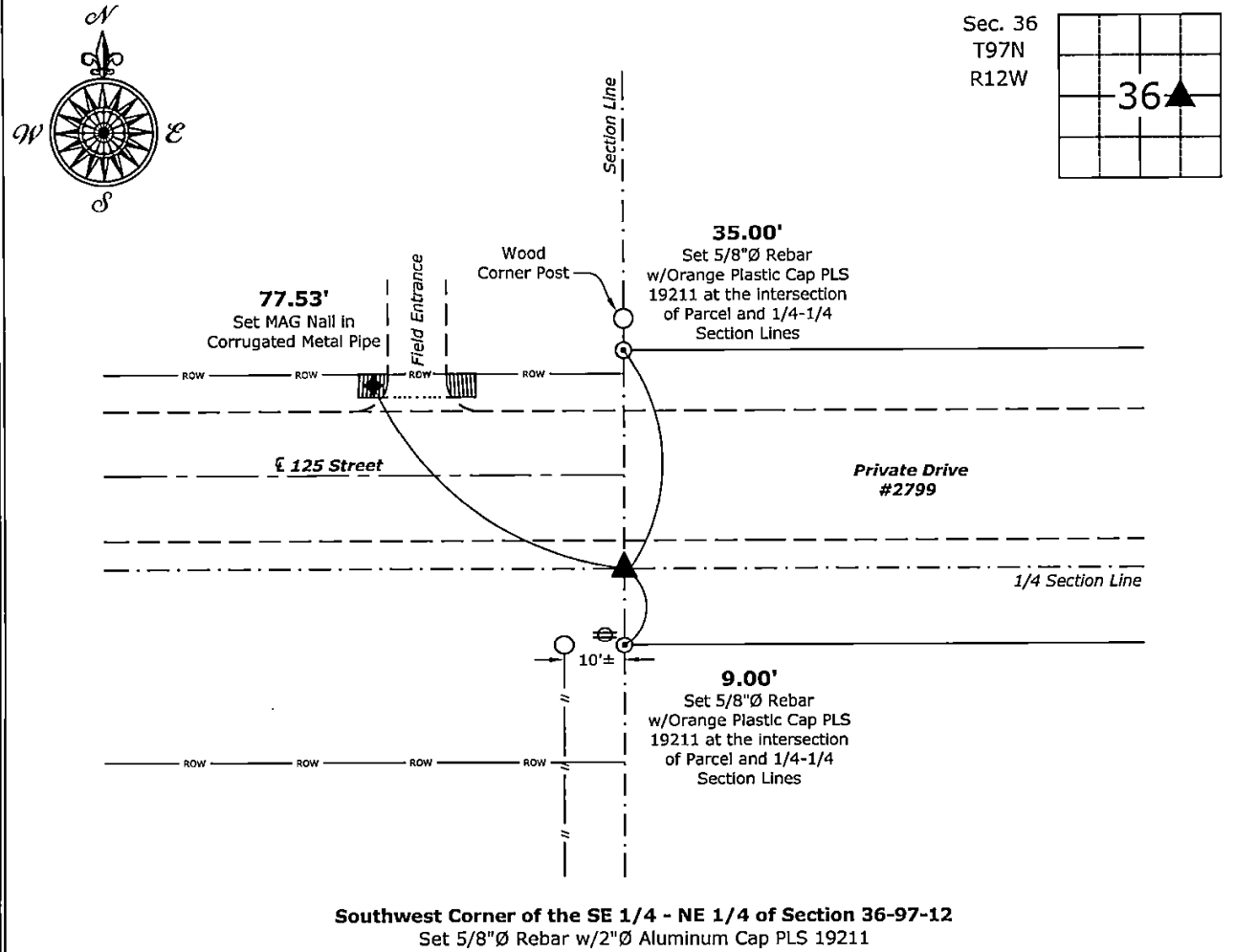
Monument Description and Remarks:

Southwest Corner of the SE 1/4 - NE 1/4: Set 5/8"Ø Rebar w/2"Ø Aluminum Cap PLS 19211 equidistant and on line between the Center and East Quarter Corners of said Section.

This Corrective Section Corner Certificate is being prepared to supersede Document #2022-2240, as it was filed in Range 11 instead of Range 12.

Plan View

(Show a minimum of three reference ties to durable physical objects, relevant monuments and physical conditions that will enable recovery of the corner.)



Southwest Corner of the SE 1/4 - NE 1/4 of Section 36-97-12
 Set 5/8"Ø Rebar w/2"Ø Aluminum Cap PLS 19211



I hereby certify that this land surveying document was prepared and the related survey work was performed by me or under my direct personal supervision and that I am a duly licensed Land Surveyor, under the laws of the State of Iowa.

Kirk D. Reicks 4-9-2025
 Kirk D. Reicks Date:
 License number 19211
 My license renewal date is December 31, 2026.
 Sheets covered by this seal: Individual sheet only

List Corner to be Indexed			
Corner	Section	Twp.	Range
SW-SE-NE	36	97	12
Project Number: 2022-154			
FB: Chickasaw 11, Pgs. 69-70			

File: S:_Projects - NHO\County Control Systems - NHO\CHICKASAW\CHICK-7\Project Folders\Z-OLD-Dwgs\CHICK-7 - 2022.dwg, 4/9/2025 3:02:41 PM