

UNITED STATES PUBLIC LAND SURVEY CORNER CERTIFICATE

OF

Land Survey Monuments situated in Section 10, Township 95 N North, Range 12 West, of the Fifth Principal Meridian, CHICKASAW County, Iowa. Previously recorded in NONE in County Recorder's Office.

(book, page, document number, etc.)

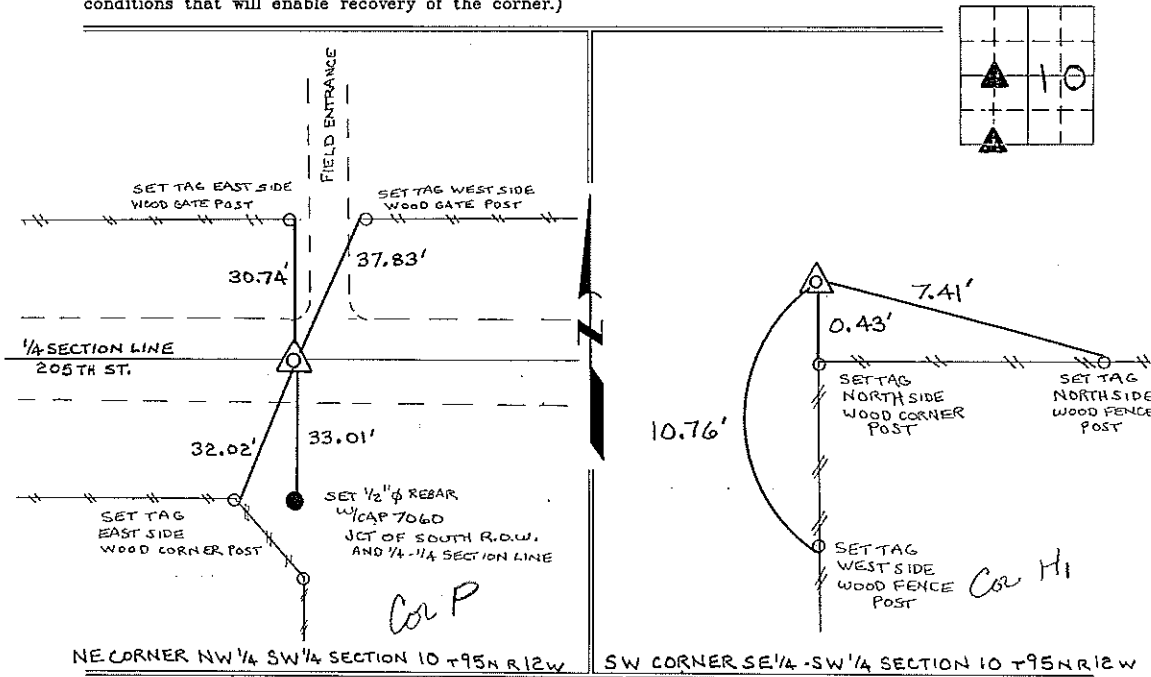
(Show reason for preparing this certificate, the evidence and detailed procedures used in establishing the corner positions and monumentation found or placed.)

Monument Description and Remarks: NE CORNER NW 1/4-SW 1/4 SECTION 10 T95N R12W:
SET 1/2" ϕ REBAR EQUADISTANT AND ON LINE BETWEEN THE W 1/4 CORNER AND THE CENTER OF SECTION

SW CORNER SE 1/4-SW 1/4 SECTION 10 T95N R12W: FOUND 1/2" ϕ REBAR W/CAP 7060, AS SHOWN ON A SURVEY AND PLAT MADE BY LYLE G. TEKIPPE, RECORDED FEBRUARY 26, 1988, DEED BOOK 140, PAGES 138-140, AND A SURVEY AND PLAT MADE BY L.P. ERDMAN, RECORDED NOVEMBER 21, 1988, DEED BOOK 141, PAGE 433, BOTH ON FILE IN THE CHICKASAW COUNTY RECORDERS OFFICE, NEW HAMPTON, IOWA.

PLAN - VIEW

(Show a minimum of three reference ties to durable physical objects, relevant monuments and physical conditions that will enable recovery of the corner.)



I hereby certify that the survey work was completed and this certificate was prepared by me or under my direct personal supervision and that I am a duly registered land surveyor under the laws of the state of Iowa.

Signature: Lyle G. Tekippe
 Lyle G. Tekippe

Date: 10-4-96 Reg. No. 7080
 My Registration Renewal Date is December 31, 1996

List Corners to be Indexed			
Corners	Section	Twp.	Range
NE-NW-SW	10	95N	12W
<i>Cor X P 10-95-12</i>			
SW-SE-SW	10	95N	12W
<i>Cor H₁ 10-95-12</i>			

