

Prepared by Harold - Reicks Surveying, 18 East Main Street, New Hampton, IA 56658, Ph. 641-994-2725 Fax. 641-994-2718

### UNITED STATES PUBLIC LAND SURVEY CORNER CERTIFICATE

Land Survey Monuments situated in Section 10, Township 95 North, Range 12 West of the Fifth Principal Meridian, Chickasaw County, Iowa. Previously recorded in Bk. 162, Pg. 212 in the County Recorder's office.

This certificate is being prepared in compliance with Iowa Code Chapter 355.11 because:

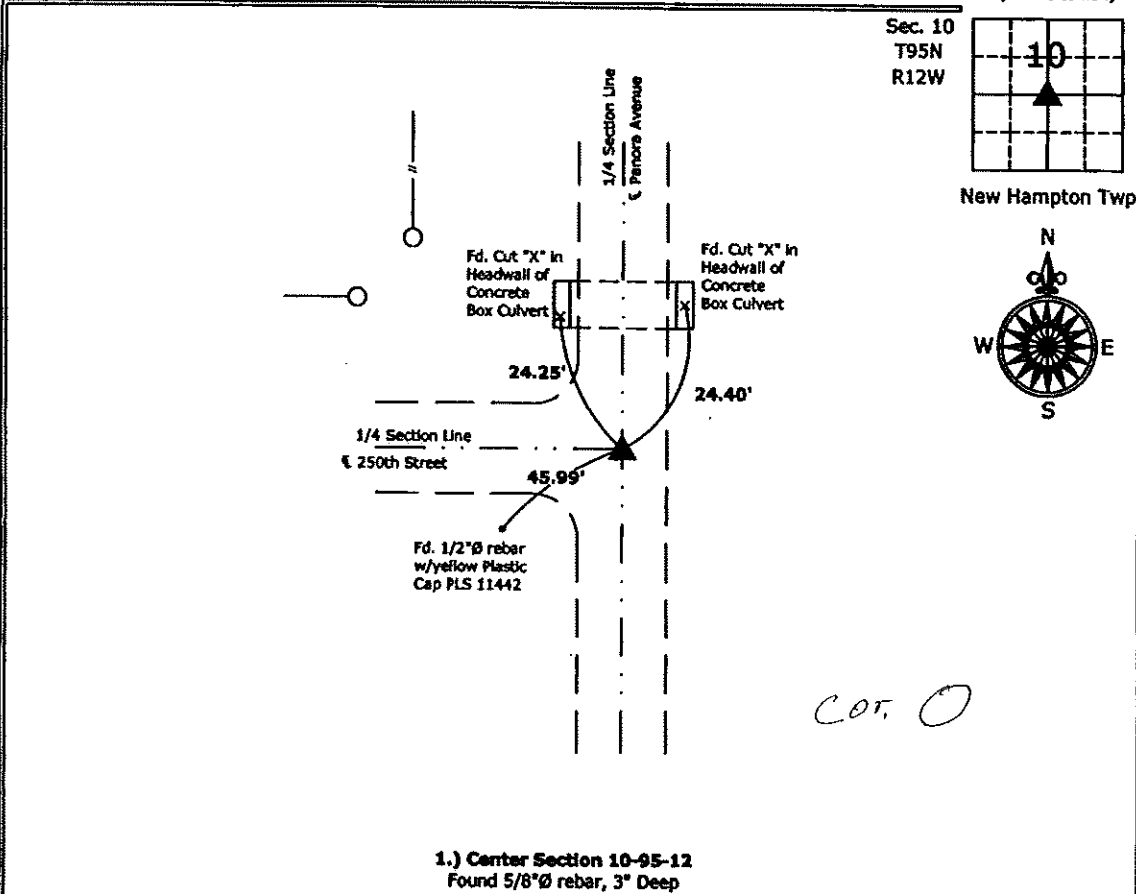
- There is no certificate on file for this corner.
- There are no longer three valid ties of record.
- There are changes to reference ties of record.
- There is change of monumentation of record.
- To clarify description of record monument (ties).

Monument Description and Remarks:

**Center of Section:** Found 5/8"Ø rebar 3" deep from information obtained from the previous Section Corner Certificate. Found 2 original ties, added 1 tie to update the Corner.

#### PLAN - VIEW

(Show a minimum of three reference ties to durable physical objects, relevant monuments and physical conditions that will enable recovery of the corner.)



1.) Center Section 10-95-12  
 Found 5/8"Ø rebar, 3" Deep



I hereby certify that this land surveying document was prepared and the related survey work was performed by me or under my direct personal supervision and that I am a duly licensed Land Surveyor under the laws of the State of Iowa.

*Kirk D. Reicks* 3-2-10  
 Kirk D. Reicks Date:

License number 19211  
 My license renewal date is December 31, 2010.  
 Sheets covered by this seal: Individual sheet only

List Corners to be Indexed			
Corners	Section	Twp.	Range
CTR	10	95	12

Project Number: 2009-157

FB: Chickasaw County 2, Pgs. 27-28

Section 9-95-12  
 As referred to in  
 Engr. Tie Book

TeKIPPE ENGINEERING, P.C., 128 South Vine Street, West Union, Iowa 52175 Phone (319) 422-5131

UNITED STATES PUBLIC LAND SURVEY CORNER CERTIFICATE

OF 9

Land Survey Monuments situated in Section 10, Township 95 North, Range 12 West, of the Fifth Principal Meridian, CHICKASAW County, Iowa.

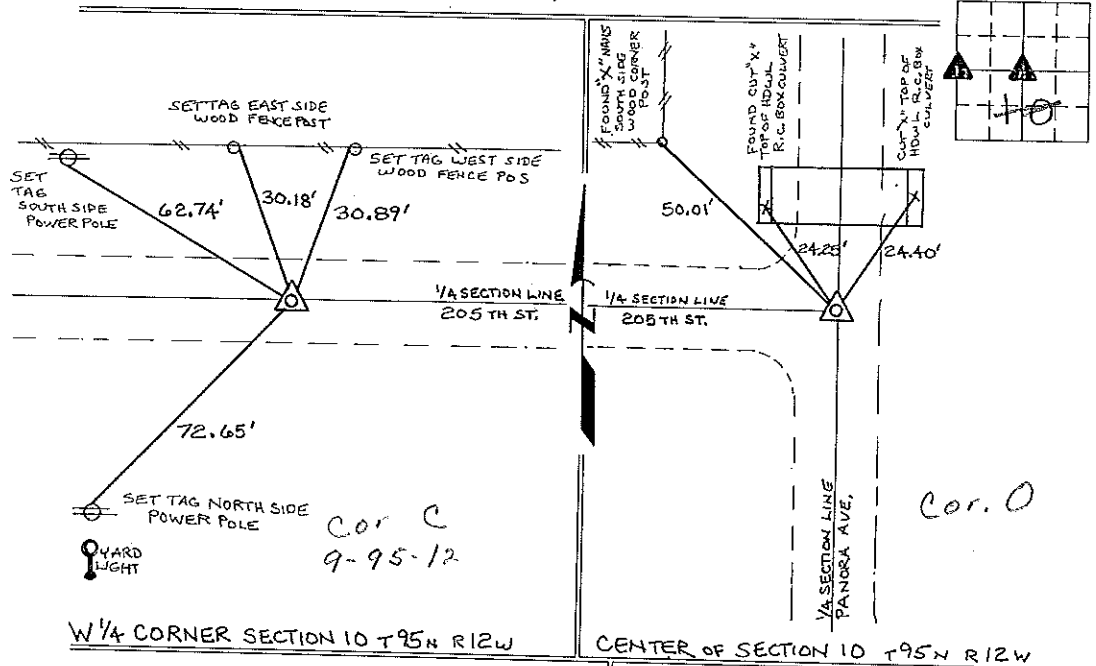
Previously recorded in NONE in County Recorder's Office.  
(book page, document number, etc.)

(Show reason for preparing this certificate, the evidence and detailed procedures used in establishing the corner positions and monumentation found or placed.)

Monument Description and Remarks: W 1/4 CORNER SECTION 10 T 95 N R 12 W: FOUND A 5/8" Ø PIPE PREVIOUSLY UNRECORDED, FOUND BY DOUBLE THE DISTANCE FROM THE CENTER OF THE SECTION TO AND ACROSS A POINT IN THE CENTER OF THE ROAD ACROSS FROM AN APPROXIMATE 1/4-1/4 SECTION LINE FENCE, THE 5/8" Ø PIPE WAS FOUND IN THE VICINITY OF THIS LOCATION. CENTER OF SECTION 10 T 95 N R 12 W: FOUND A 5/8" Ø REBAR AS SHOWN IN THE COUNTY ENGINEERS OFFICE IN FIELD BOOK "NEW HAMPTON TWP." SECTION 10, AND ON NUMEROUS SURVEYS AND PLATS ON RECORD IN THE CHICKASAW COUNTY RECORDERS OFFICE.

PLAN - VIEW

(Show a minimum of three reference ties to durable physical objects, relevant monuments and physical conditions that will enable recovery of the corner.)



I hereby certify that the survey work was completed and this certificate was prepared by me or under my direct personal supervision and that I am a duly registered land surveyor under the laws of the state of Iowa.

Signature: Lyle G. TeKippe  
 Lyle G. TeKippe  
 Date: 10-4-96 Reg. No. 7080  
 My Registration Renewal Date is December 31, 1998

Seal



Corners	Section	Twp.	Range
W 1/4	10	95 N	12 W
	COR C - 9, 95, 12		
CENTER	10	95 N	12 W
	COR O 10-95-12		

Placed in Tie Book