

Prepared by & Return to: Herold - Reicks Surveying, 10 East Main Street, New Hampton, IA 50659, Ph. 641-394-2725

UNITED STATES PUBLIC LAND SURVEY CORNER CERTIFICATE

Land Survey Monuments situated in Section 10, Township 95 North, Range 12 West of the Fifth Principal Meridian, Chickasaw County, Iowa. Not previously recorded in the County Recorder's office.

This certificate is being prepared in compliance with Iowa Code Chapter 355.11 because:

- 1 & 2 There is no certificate on file for this corner.
 There are no longer three valid ties of record.
 There are changes to reference ties of record.
 There is change of monumentation of record.
 To clarify description of record monument (ties).

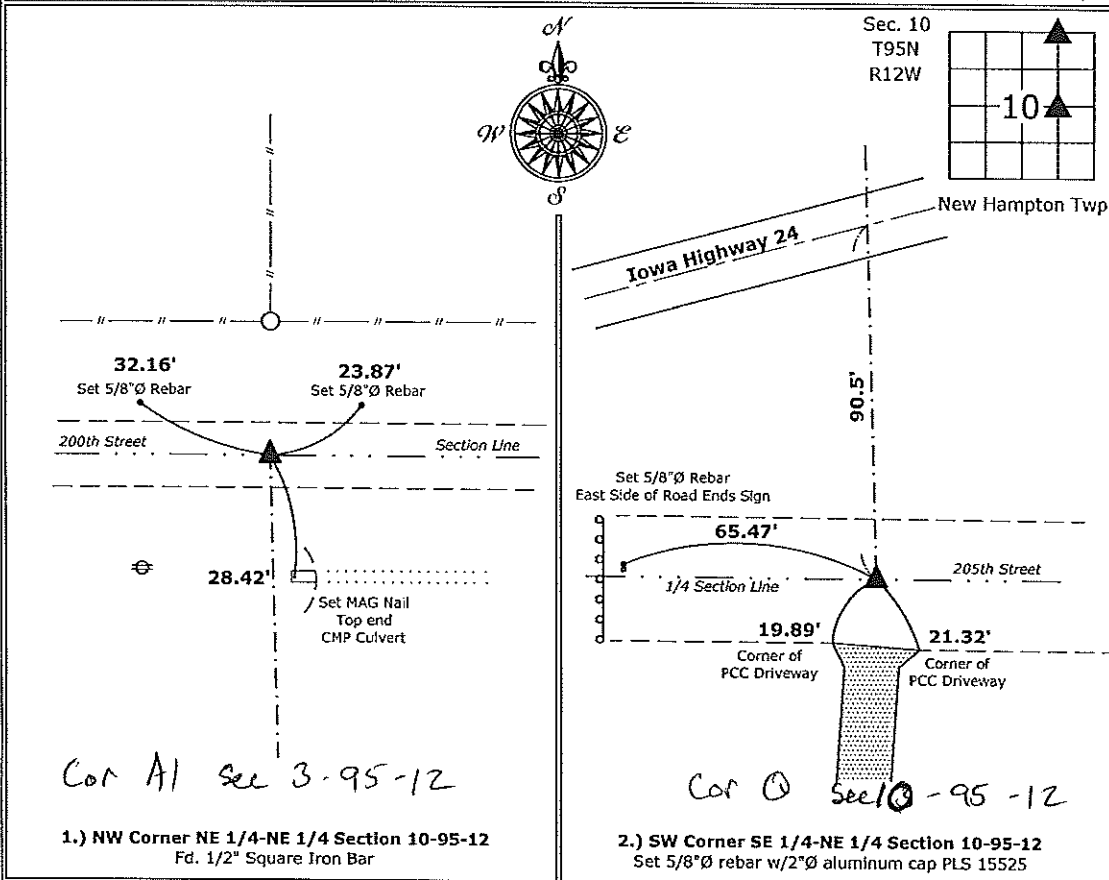
Monument Description and Remarks:

1.) NW Corner NE 1/4-NE 1/4: Fd. 1/2" Square Iron Bar, Corner does not have history, however monument found is conducive of previous monuments utilized in Chickasaw County, Corner is on line between the N 1/4 Corner and the Northeast Corner of the Section, and on line with fences North & South, location also matches deed locations in the NW 1/4-NE 1/4 & the NE 1/4-NE 1/4 of the Section, therefore accepted position as the true Corner.

2.) SW Corner SE 1/4-NE 1/4: Set 5/8"Ø Rebar w/2"Ø Alum. Cap, equidistant and on line between the Center and the E 1/4 Corners.

PLAN - VIEW

(Show a minimum of three reference ties to durable physical objects, relevant monuments and physical conditions that will enable recovery of the corner.)



I hereby certify that this land surveying document was prepared and the related survey work was performed by me or under my direct personal supervision and that I am a duly licensed Land Surveyor under the laws of the State of Iowa.

Paul R. Herold 4-30-15
 Paul R. Herold Date:
 License number 15525
 My license renewal date is December 31, 2016.
 Sheets covered by this seal: Individual sheet only

List Corners to be Indexed			
Corners	Section	Twp.	Range
NW-NE-NE	10	95	12
SW-SE-NE	10	95	12

Project Number: 2014-203
 FB: Chickasaw County 6, Pg. 74

File: S:_CSD Projects\County Control Systems\CHICKASAW\CHICK-29\CHICK-29.dwg, 4/30/2015 11:06:16 AM