

Section 2-95-12
As referred to in
Eng. Tr. Book

SLSI 9-90

UNITED STATES PUBLIC LAND SURVEY CORNER CERTIFICATE

OF

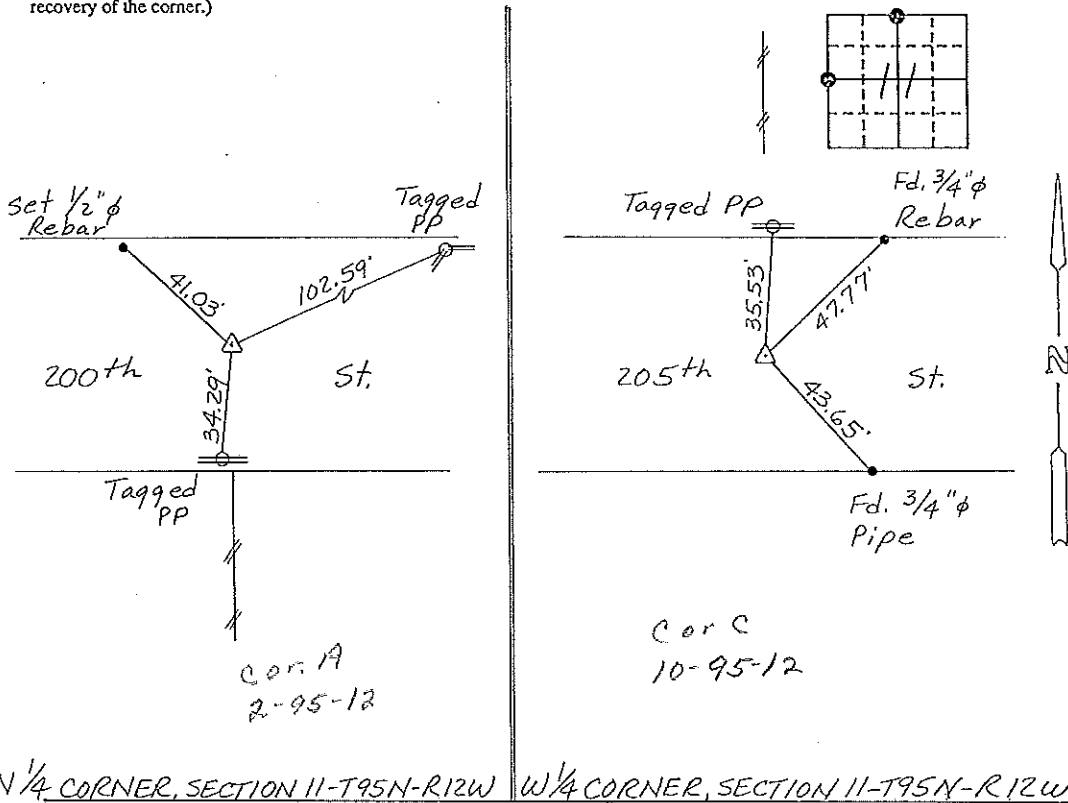
Land Survey Monuments situated in Section 11, Township 95 NORTH, Range 12 WEST, of the Fifth Principal Meridian, Chickasaw County, Iowa. Previously recorded in NONE in County Recorder's Office.

(Show reason for preparing this certificate, the evidence and detailed procedures used in establishing the corner positions and monumentation found or placed.)

Monument Description and Remarks: N 1/4 CORNER, SECTION 11-T95N-R12W:
Set 1/2" ϕ Rebar w/cap on E of County Road and in Line with Fence South as according to existing Ties.
W 1/4 CORNER, SECTION 11-T95N-R12W: Found 1/2" ϕ Iron Pipe.

PLAN - VIEW

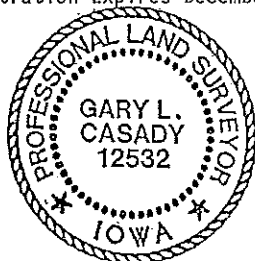
(Show a minimum of three reference ties to durable physical objects, relevant monuments and physical conditions that will enable recovery of the corner.)



N 1/4 CORNER, SECTION 11-T95N-R12W W 1/4 CORNER, SECTION 11-T95N-R12W

I hereby certify that the survey work was completed and this certificate was prepared by me or under my direct personal supervision and that I am a duly registered land surveyor under the laws of the state of Iowa.

Signature: Gary L. Casady
Name typed or printed: Gary L. Casady
Date: 9-15-93 Reg. No. 12532
My Registration Expires December 31, 1994



SEAL

| Corners | List Corners to be Indexed | Section | Twp | Range |
|---------|----------------------------|---------|------|-------|
| N 1/4 | 11 | 95N | 12 W | |
| | A of 2-95-12 | | | |
| W 1/4 | 11 | 95N | 12 W | |
| | Cor C 10-95-12 | | | |

*Placed in Ti
Revised
9/30/93*