

Chickasaw Co. Recorder
 Cindy Messersmith
Fee Book 2007-1047
 05/22/2007 @1054AM
 SCC SEC COR CERT
 Book: Page: # Pages: 1
 Total Fees: \$7.00

Herold - Recks Surveying, 25 1/2 East Main Street, Suite 204, New Hampton, IA 50659, Ph. 641-394-2125

UNITED STATES PUBLIC LAND SURVEY CORNER CERTIFICATE

Land Survey Monuments situated in:
 Section 10, Township 95 North, Range 12 West of the Fifth Principal Meridian,
Chickasaw County, Iowa. Previously recorded in None
 in County Recorder's Office. (book, page, document number, etc.)

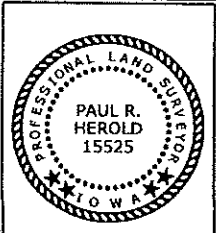
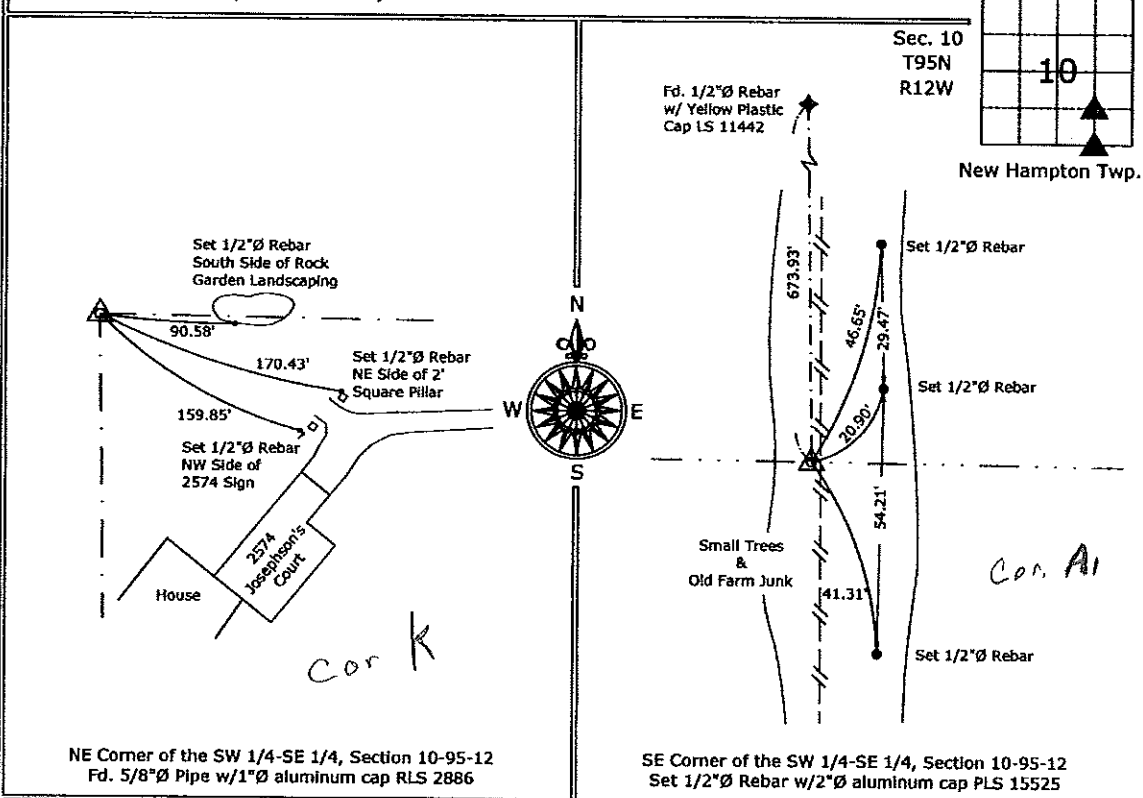
(Show reason for preparing this certificate, the evidence and detailed procedures used in establishing the corner positions and monumentation found or placed.)

Monument Description and Remarks:
 NE Corner of the SW 1/4-SE 1/4, Section 10-95-12, Fd. a 5/8"Ø Pipe w/ 1"Ø Alum. Cap RLS 2886, from information on a survey and plat of Josephson's Addition, made by L.P. Erdman, recorded November 20, 1979, Book 120, Pages 439-445, on file in the Chickasaw County Recorder's Office, New Hampton, Iowa.

SE Corner of the SW 1/4-SE 1/4, Section 10-95-12, Set a 1/2"Ø Rebar w/ 2"Ø Alum. Cap PLS 15525, by extending a line from the NE Corner of the SW 1/4-SE 1/4, South across a monument on the Quarter-Quarter Section Line (survey and plat recorded May 2, 2006, Doc. #2006-0920) and intersecting the Section Line between the S 1/4 Corner and the SE Corner of the Section.

PLAN - VIEW

(Show a minimum of three reference ties to durable physical objects, relevant monuments and physical conditions that will enable recovery of the corner.)



I hereby certify that this land surveying document was prepared and the related survey work was performed by me or under my direct personal supervision and that I am a duly licensed Land Surveyor under the laws of the State of Iowa.
Paul R. Herold 5-22-07
 Paul R. Herold Date:
 License number 15525
 My license renewal date is December 31, 2008.
 Sheets covered by this seal: Individual sheet only

List Corners to be Indexed			
Corners	Section	Twp.	Range
NE-SW-SE	10	95	12
SE-SW-SE	10	95	12

Project Number: 2007-025
 FB: Chickasaw County 1, Pgs. 5-6

File: S:\Projects\2007-025\dwg\2007-025.dwg, 5/16/2007 5:58:46 PM