

Section 11-95-12
As referred to in
Engr Tie Book

PREPARED BY: DARYL EIFFLER, 215 N ADAMS, MASON CITY, IOWA 50401, 641-424-6344

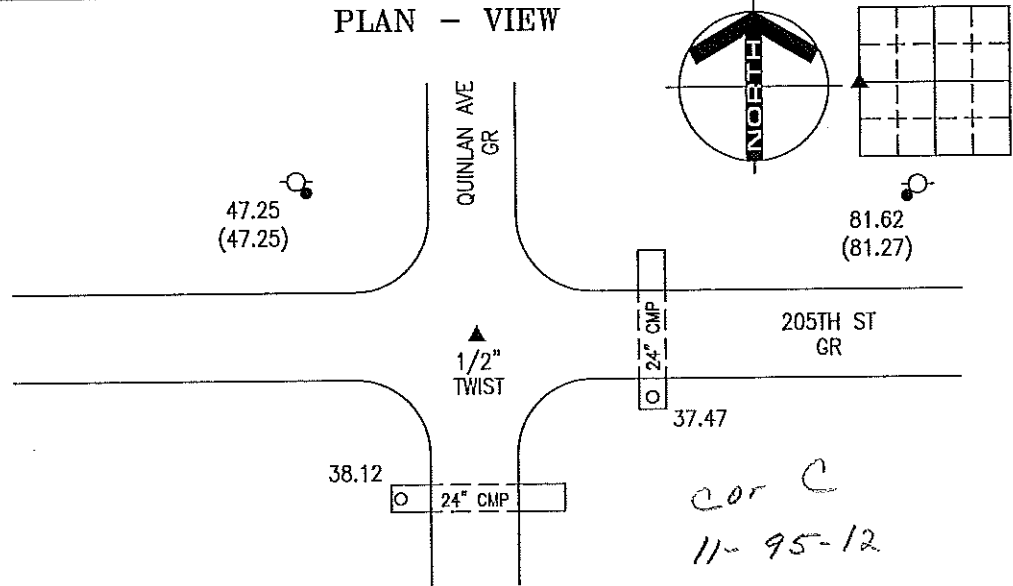
UNITED STATES PUBLIC LAND SURVEY CORNER CERTIFICATE OF

Land Survey Monuments situated in Section 12, Township 95 NORTH, Range 12 WEST, of the Fifth Principal Meridian, CHICKASAW County, Iowa
Previously recorded in BOOK 153, PAGE 88 in County Recorder's Office.
(book, page)

Monument Description and Remarks: W 1/4 CORNER - FOUND 1/2" TWIST METAL PIN 0.4' DOWN USING CERTIFICATE OF RECORD.

SET ADDITIONAL TIES AS SHOWN.

PLAN - VIEW



W 1/4 CORNER

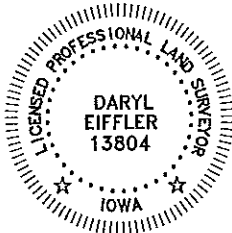
LEGEND

- - UTILITY POLE
- × - EXISTING FENCE, FENCE POST
- ▲ - FOUND LAND CORNER
- △ - SET LAND CORNER
- - FOUND ORANGE PLASTIC CAP & NAIL
- - SET REFERENCE TIES ARE A BRASS DISK STAMPED PLS 13804 UNLESS NOTED
- ACC- ASPHALT CEMENT CONCRETE SURFACING
- PCC- PORTLAND CEMENT CONCRETE SURFACING
- SRP- SURVEY REFERENCE POINT
- GR- GRAVEL SURFACING
- YPC- YELLOW PLASTIC CAP
- (00.00)- RECORDED DISTANCE

PROJECT NO. 9635

FILE 951212

(00.00)- RECORDED DISTANCE



I HEREBY CERTIFY THAT THIS LAND SURVEYING DOCUMENT WAS PREPARED AND THE RELATED SURVEY WORK WAS PERFORMED BY ME OR UNDER MY DIRECT PERSONAL SUPERVISION AND THAT I AM A DULY LICENSED PROFESSIONAL LAND SURVEYOR UNDER THE LAWS OF THE STATE OF IOWA.

FOR YAGGY COLBY ASSOCIATES

Daryl Eiffler 4/14/08
DARYL EIFFLER DATE
LICENSE NUMBER 13804

MY LICENSE RENEWAL DATE IS DECEMBER 31, 2008 SHEETS COVERED BY THIS SEAL: 1

List Corners to be Indexed
Corners Section Twp Range
W 1/4 12 95N 12W

ENGINEERS • ARCHITECTS
SURVEYORS • PLANNERS
LANDSCAPE ARCHITECTS

215 NORTH ADAMS
MASON CITY, IOWA 50401
641-424-6344



UNITED STATES PUBLIC LAND SURVEY CORNER CERTIFICATE

OF

Land Survey Monuments situated in Section 11, Township 95 NORTH, Range 12 WEST, of the Fifth Principal Meridian, CHICKASAW County, Iowa.
 Previously recorded in NONE in County Recorder's Office.

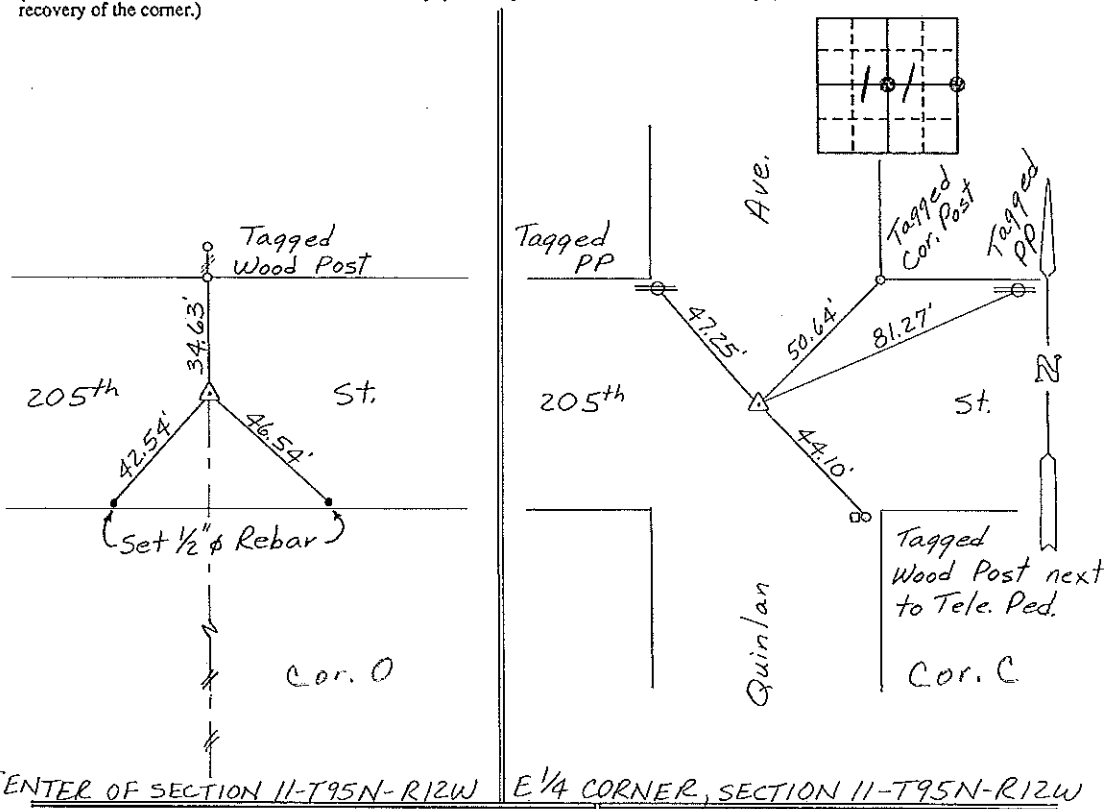
(book, page, document number, etc.)

(Show reason for preparing this certificate, the evidence and detailed procedures used in establishing the corner positions and monumentation found or placed.)

Monument Description and Remarks: CENTER OF SECTION 11-T95N-R12W:
Set 1/2" φ Rebar w/cap at intersection of County Road E and
N-5 1/4 Section Line Fence as indicated on 1972 & 1980 Surveys.
E 1/4 CORNER, SECTION 11-T95N-R12W: Found 1/2" Twisted Iron Pin.

PLAN - VIEW

(Show a minimum of three reference ties to durable physical objects, relevant monuments and physical conditions that will enable recovery of the corner.)

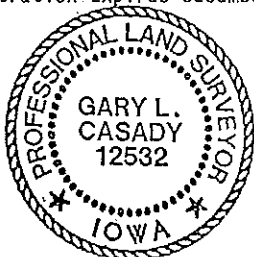


CENTER OF SECTION 11-T95N-R12W E 1/4 CORNER, SECTION 11-T95N-R12W

I hereby certify that the survey work was completed and this certificate was prepared by me or under my direct personal supervision and that I am a duly registered land surveyor under the laws of the state of Iowa.

Signature: Gary L. Casady
 Name typed or printed: Gary L. Casady
 Date: 9-15-93 Reg. No. 12532
 My Registration Expires December 31, 1994

Corners	List Corners to be Indexed	Section	Twp	Range
Center	11	95N	12W	
E 1/4	Cor. O	11-95-12		
	Cor. C	11-95-12		



SEAL

Placed in Tie Box 9/30/93