



Prepared by & Return to: Herold - Reicks Surveying, 10 East Main Street, New Hampton, IA 50659, Ph. 641-394-2725

### United States Public Land Survey Corner Certificate

Land Survey Monument situated in  
 Section 12, Township 95 North, Range 12 West of the Fifth Principal Meridian, Chickasaw County, Iowa.  
 Not on file in the County Recorder's office.

This certificate is being prepared in compliance with Iowa Code Chapter 355.11 because:

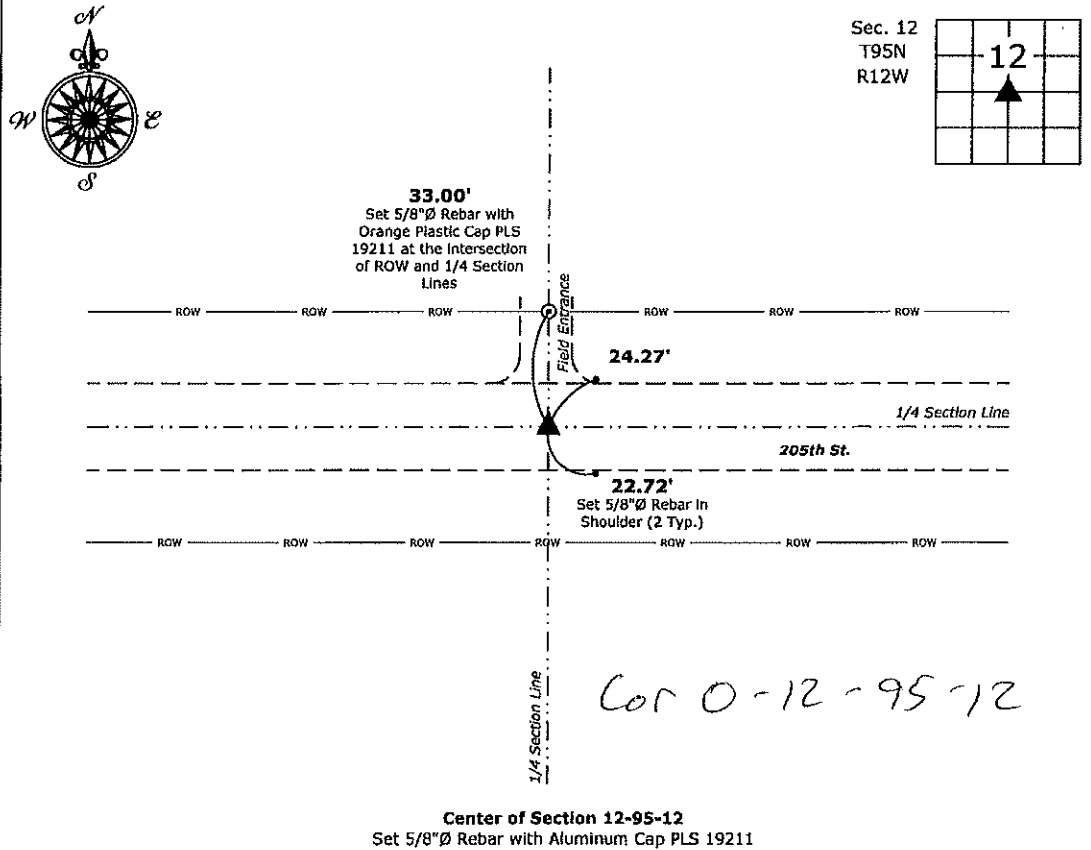
- There is no certificate on file for this corner.
- There are no longer three valid ties of record.
- There are changes to reference ties of record.
- There is change of monumentation of record.
- To clarify description of record monument (ties).

**Monument Description and Remarks:**

**Center of Section:** Set 5/8"Ø Rebar with Aluminum Cap PLS 19211 at the Intersection of 1/4 Section Lines.  
 There is no record of the perpetuation of a monument at this Corner.

#### Plan View

(Show a minimum of three reference ties to durable physical objects, relevant monuments and physical conditions that will enable recovery of the corner.)



**Center of Section 12-95-12**  
 Set 5/8"Ø Rebar with Aluminum Cap PLS 19211



I hereby certify that this land surveying document was prepared and the related survey work was performed by me or under my direct personal supervision and that I am a duly licensed Land Surveyor under the laws of the State of Iowa.  
*Kirk D. Reicks* 12-19-19  
 Kirk D. Reicks Date:  
 License number 19211  
 My license renewal date is December 31, 2020.  
 Sheets covered by this seal: Individual sheet only

List Corner to be Indexed			
Corner	Section	Twp.	Range
CTR	12	95	12
Project Number: 2019-122			
FB: Chickasaw 10, Pgs. 8-9			

Chickasaw Co. Recorder  
 Cindy Messersmith  
**Fee Book 2007-1952**  
 10/04/2007 @1128AM  
 SCC SEC COR CERT # Pages: 1  
 Book: Page: \$7.00  
 Total Fees:

*Herold - Reicks Surveying, 25 1/2 East Main Street, Suite 204, New Hampton, IA 50658, Ph 641-394-2725*

**UNITED STATES PUBLIC LAND SURVEY CORNER CERTIFICATE**

Land Survey Monuments situated in:  
 Section 12, Township 95 North, Range 13 West of the Fifth Principal Meridian,  
CHICKASAW County, Iowa. Previously recorded in Book 151, Page 261  
 in County Recorder's Office. (book, page, document number, etc.)

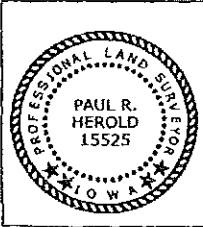
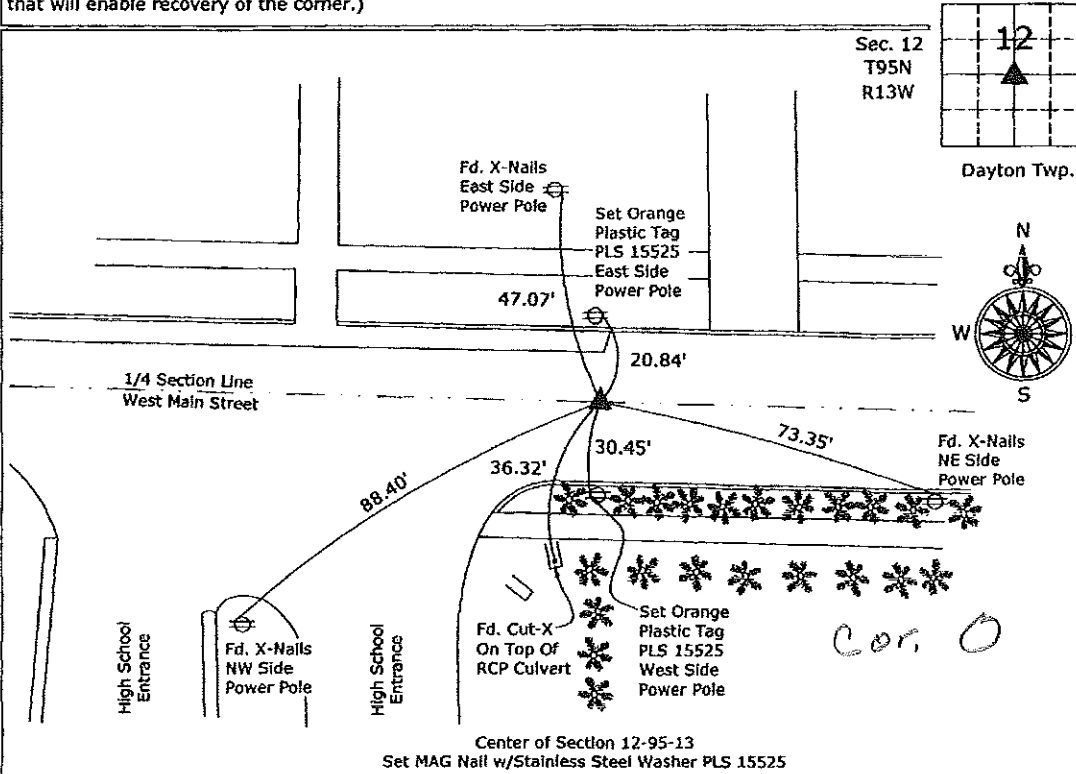
(Show reason for preparing this certificate, the evidence and detailed procedures used in establishing the corner positions and monumentation found or placed.)

**Monument Description and Remarks:**

Center of Section 12-95-13, Set MAG Nail w/Stainless Steel Washer PLS 15525, from ties obtained from the Iowa Department of Transportation and from the previous section corner certificate, the previous monument (PK nail) was covered over by an HMA resurfacing project.

**PLAN - VIEW**

(Show a minimum of three reference ties to durable physical objects, relevant monuments and physical conditions that will enable recovery of the corner.)



I hereby certify that this land surveying document was prepared and the related survey work was performed by me or under my direct personal supervision and that I am a duly licensed Land Surveyor under the laws of the State of Iowa.  
*Paul R. Herold* 10-2-07  
 Paul R. Herold Date:  
 License number 15525  
 My license renewal date is December 31, 2008.  
 Sheets covered by this seal: Individual sheet only

List Corners to be Indexed			
Corners	Section	Twp.	Range
Center	12	95	13
Project Number: 2007-102			
FB: New Hampton 1, Pgs. 15-16			

File: S:\Projects\2007\2007-102\dwg\2007-102.dwg, 10/2/2007 8:52:36 AM