

Section 1-95-12
 As referred to in
 Engg. T.C. Book

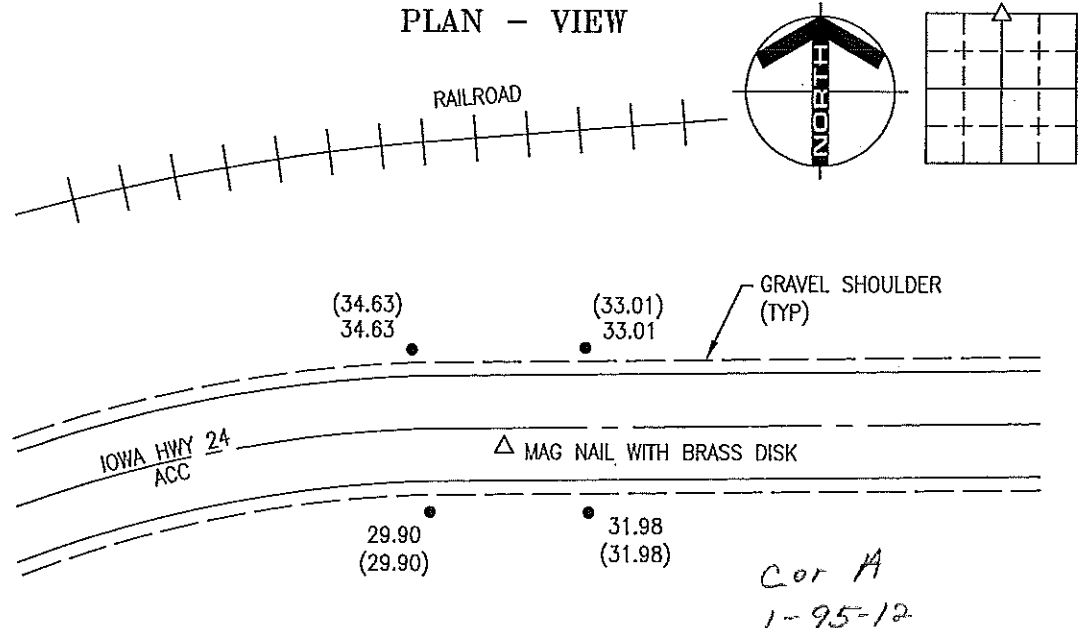
PREPARED BY: DARYL EIFFLER, 215 N ADAMS, MASON CITY, IOWA 50401, 641-424-6344

UNITED STATES PUBLIC LAND SURVEY CORNER CERTIFICATE OF

Land Survey Monuments situated in Section 12, Township 95 NORTH, Range 12 WEST, of the Fifth Principal Meridian, CHICKASAW County, Iowa
 Previously recorded in DOES NOT APPLY in County Recorder's Office.
 (book, page, document number, etc.)

Monument Description and Remarks: NO CERTIFICATE OF RECORD FOR THIS CORNER.
N 1/4 CORNER - NO MONUMENT FOUND. FOUND ALL 4 CHICKASAW COUNTY ENGINEERING DEPARTMENT
REFERENCE TIES. CROSSED TIES AND SET MAG NAIL WITH BRASS DISK STAMPED NO. 13804 FLUSH WITH ACC
2.7' ± SOUTH OF C.
FOUND TIES AS SHOWN.

PLAN - VIEW

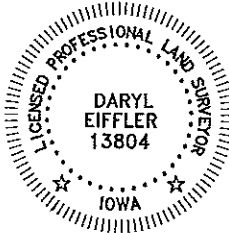


Cor A
 1-95-12

LEGEND

- - UTILITY POLE
- X-X-○ - EXISTING FENCE, FENCE POST
- ▲ - FOUND LAND CORNER
- △ - SET LAND CORNER
- - FOUND 5/8" REBAR
- - SET REFERENCE TIES ARE A BRASS DISK STAMPED PLS 13804 UNLESS NOTED
- ACC - ASPHALT CEMENT CONCRETE SURFACING
- PCC - PORTLAND CEMENT CONCRETE SURFACING
- SRP - SURVEY REFERENCE POINT
- GR - GRAVEL SURFACING
- YPC - YELLOW PLASTIC CAP
- (00.00) - COUNTY DISTANCE

PROJECT NO. 9635 FILE 951212



I HEREBY CERTIFY THAT THIS LAND SURVEYING DOCUMENT WAS PREPARED AND THE RELATED SURVEY WORK WAS PERFORMED BY ME OR UNDER MY DIRECT PERSONAL SUPERVISION AND THAT I AM A DULY LICENSED PROFESSIONAL LAND SURVEYOR UNDER THE LAWS OF THE STATE OF IOWA.

FOR YAGGY COLBY ASSOCIATES

Daryl Eiffler
 DARYL EIFFLER
 LICENSE NUMBER 13804
 DATE 4/14/08

MY LICENSE RENEWAL DATE IS DECEMBER 31, 2008 SHEETS COVERED BY THIS SEAL: 1

List Corners to be Indexed	Corners	Section	Twp	Range
	N 1/4	12	95N	12W

ENGINEERS • ARCHITECTS
 SURVEYORS • PLANNERS
 LANDSCAPE ARCHITECTS



215 NORTH ADAMS
 MASON CITY, IOWA 50401
 641-424-6344

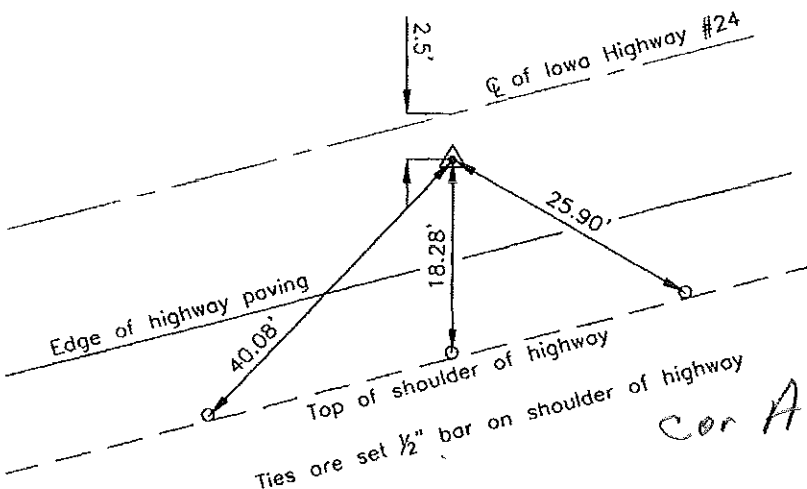
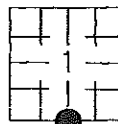
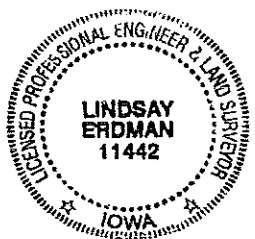
Prepared by: Erdman Engineering, P.C., 708 Commerce Drive, P.O. Box 246, Decorah, Iowa 52101 (563) 382-4194

United States Public Land Survey Corner Certificate
 of

Land Survey Monuments situated in Section 1, Township 95, Range 12 West of the 5th Principal Meridian in Chickasaw County, Iowa. Previously recorded in does not apply in the county Recorder's Office.

Monument Description and Remarks: This certificate is prepared in accordance with Section 193C of the Code of Iowa. No previous certificate has been filed for this corner location. Based on the Plat of Survey recorded in Fee Book 2007-0823 in the Chickasaw County Recorder's Office we found a Mag-nail with 1 1/2" diamter washer #13804 that matches the description of the monument used previously as the S 1/4 Corner of Section 1, Township 95 North, Range 12 West.

Plan-View



I hereby certify that this land surveying document was prepared and the related survey work was performed by me or under my direct personal supervision and that I am a duly licensed Land Surveyor under the laws of the State of Iowa.

Signature Lindsay Erdman
 Lindsay Erdman, P.E. and P.L.S. Iowa License Number 11442

Date 10/17/07

My license renewal date is December 31, 2008

Corner(s) to be Indexed

Corner	Section	Township	Range
S 1/4	1	95	12