

Section 12-95-12
As referred to in
Engr. Title Book

FILED 2002 - 2123
RECORDER'S OFFICE
CHICKASAW COUNTY, IOWA
2002 AUG 30 AM 10 32
CINDY MEESER WITH
COUNTY RECORDER

TeKIPPE ENGINEERING, P.C., 128 South Vine Street, West Union, Iowa 52176 Phone (563) 422-5131

UNITED STATES PUBLIC LAND SURVEY CORNER CERTIFICATE

OF
Land Survey Monuments situated in Section 12, Township 95 North, Range 11W West of the Fifth Principal Meridian, CHICKASAW County, Iowa.
Previously recorded in none in County Recorder's Office.
(book, page, document number, etc.)

(Show reason for preparing this certificate, the evidence and detailed procedures used in establishing the corner positions and monumentation found or placed.)

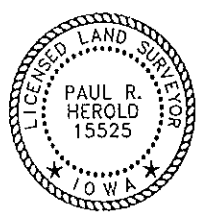
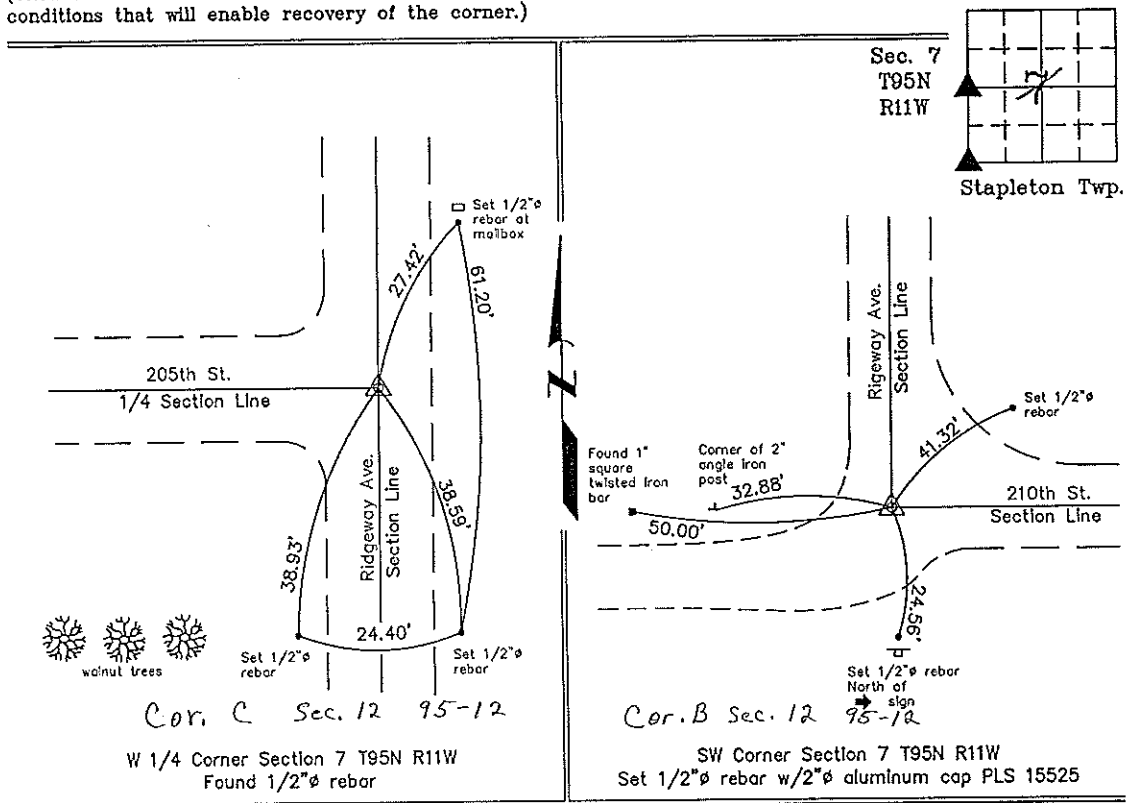
Monument Description and Remarks: W 1/4 Corner Section 7 T95N R11W: Found 1/2"Ø rebar with information obtained from the Chickasaw County Engineer's Office in Field Book New Hampton Twp. Corner Ties, Section 12, Corner 'C'.

SW Corner Section 7 T95N R11W: Set 1/2"Ø rebar w/2"Ø aluminum cap PLS 15525 using Chickasaw County reference ties obtained from the Chickasaw County Enigneer's Office in Field Book New Hampton Twp. Corner Ties, Section 12, Corner 'B'.

PLAN - VIEW

Project Number 02193.LS
FB. 46J PG. 27-31

(Show a minimum of three reference ties to durable physical objects, relevant monuments and physical conditions that will enable recovery of the corner.)



I hereby certify that this land surveying document was prepared and the related survey work was performed by me or under my direct personal supervision and that I am a duly licensed Land Surveyor under the laws of the State of Iowa.
Paul R. Herold 8-29-02
Paul R. Herold Date
License number 15525
My license renewal date is December 31, 2002.
Sheets covered by this seal: Individual

List Corners to be Indexed			
Corners	Section	Twp.	Range
W 1/4	7	95N	11W
SW	7	95N	11W

Filed 9-5-02
X:\Section Corners\Sec. 07\7-95-11ku.dwg

County Engineer's Copy