

DOCUMENT NO. 01085 FILED FOR RECORD THE 14th DAY OF STATE OF IOWA, CHICKASAW COUNTY.
 RECORDING FEE \$ 6.00 November, 1996 AT 8:30
 TRANSFER FEE \$ O'CLOCK A.M. BOOK 162 Deeds PAGE 343 By Leitha N. Ross Recorder
 LEITHA N. ROSS Deputy

Prepared by: Erdman Engineering P.C. 708 Commerce Drive, P.O. Box 246, Decora Iowa, 52101
 Phone (319)382-4194, Fax (319)382-3623

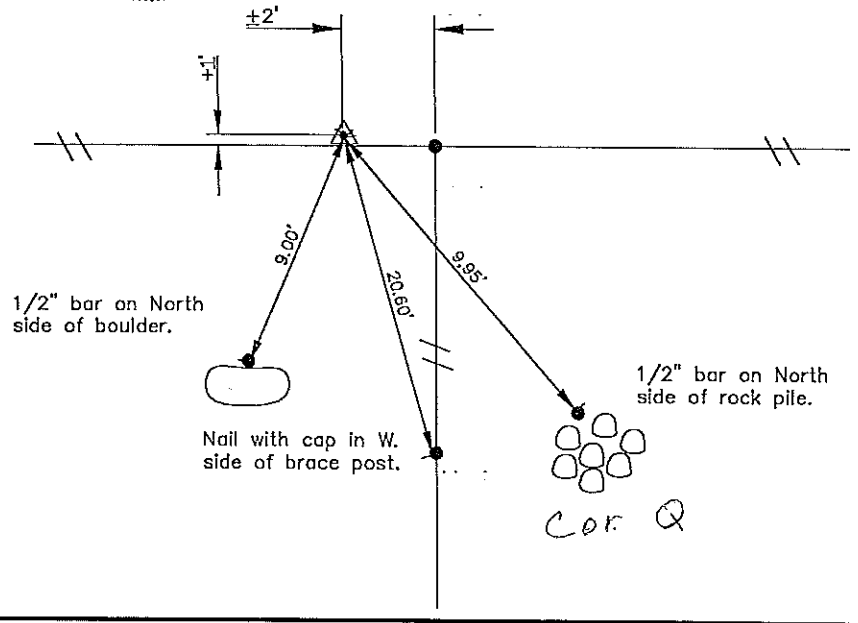
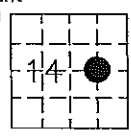
United States Public Land Survey Corner Certificate
of

Land Survey Monuments situated in Section 14 Township 95 Range 12 of the Fifth Principle Meridian, Chickasaw County, Iowa. Previously recorded In does not apply In County Recorders Office.

(Show reason for preparing this certificate, the evidence and detailed procedures used in establishing the corner positions and monumentation found or placed.)

Monument Description and Remarks: This certificate is prepared in accordance with Section 355.11 of the 1995 Code of Iowa. No previous certificate has been filed for this corner location. We found no record of the E 1/8 corner being set or tied out. We found no existing evidence of the corner other than the fence lines shown. We set a 1/2" bar with cap RLS #11442 at the E 1/4 Corner and the W 1/4 Corner. We also found a 1" pipe at the S 1/4 Corner and a 5/8" pipe at the N 1/4 Corner of the Section. We computed a theoretical position for the Center of the Section on a line between the S 1/4, N 1/4 line and the W 1/4, E 1/4 line. Based on this, we set a 1/2" bar with cap RLS #11442 on line and midway between the theoretical position of the Center of the Section and the E 1/4 Corner at the E 1/8 Corner of Sec. 14-95-12.

Plan-View
 (Show a minimum of three reference ties to durable physical objects, relevant monuments and physical conditions that will enable recovery of the corner.)



I hereby certify that the survey work was completed and this certificate was prepared by me or under my direct supervision and that I am a duly registered land surveyor under the laws of the State of Iowa.

Signature Lindsay Erdman
 Lindsay Erdman, P.E. and L.S.
 Date: 11/4/96 Reg. No. 11442

My license will be renewed January 1, 1997

List Corners to be Indexed			
Corners	Section	Twp.	Range
E 1/8	14	95	12