

DOCUMENT No. 01084 FILED FOR RECORD THE 14th DAY OF NOVEMBER 1996 AT 8:30 O'CLOCK A.M. BOOK 162 DEEDS PAGE 342 STATE OF IOWA, CHICKASAW COUNTY, Leitha N. Ross Recorder  
 RECORDING FEE \$ 6.00 By Leitha N. Ross Deputy  
 TRANSFER FEE \$ --- LEITHA N. ROSS

Prepared by: Erdman Engineering P.C. 708 Commerce Drive, P.O. Box 246, Decorah Iowa, 52101  
 Phone (319)382-4194, Fax (319)382-3623

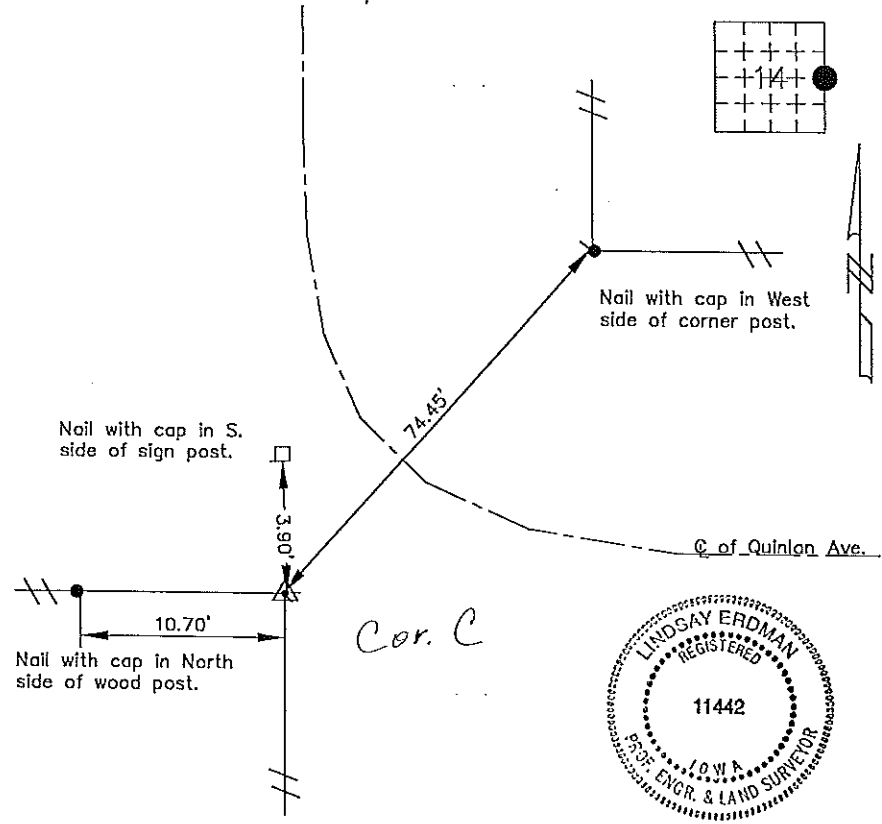
**United States Public Land Survey Corner Certificate**  
 of

Land Survey Monuments situated in Section 14 Township 95 Range 12 of the Fifth Principle Meridian, Chickasaw County, Iowa. Previously recorded in does not apply in County Recorders Office.

(Show reason for preparing this certificate, the evidence and detailed procedures used in establishing the corner positions and monumentation found or placed.)

Monument Description and Remarks: This certificate is prepared in accordance with Section 355.11 of the 1995 Code of Iowa. No previous certificate has been filed for this corner location. We found no record of the E 1/4 Corner being set or tied out. We found no existing evidence of the corner other than the fence lines shown. Based on this we set a 1/2" bar with cap RLS #11442 at the intersection of fence lines running East and West at the E 1/4 Corner of Sec. 14-95-12.

Plan-View  
 (Show a minimum of three reference ties to durable physical objects, relevant monuments and physical conditions that will enable recovery of the corner.)



I hereby certify that the survey work was completed and this certificate was prepared by me or under by direct supervision and that I am a duly registered land surveyor under the laws of the State of Iowa.

Signature Lindsay Erdman  
 Lindsay Erdman, P.E. and L.S.  
 Date: 11/4/96 Reg. No. 11442  
 My license will be renewed January 1, 1997

List Corners to be Indexed			
Corners	Section	Twp.	Range
E 1/4	14	95	12