

Section 11-95-12
 As referred to in
 Engg. Tie Book

00975
 DOCUMENT No. FILED FOR RECORD THE 4th DAY OF STATE OF IOWA, CHICKASAW COUNTY.
 RECORDING FEE \$ 6.00 November 19 96 AT 8:58
 TRANSFER FEE \$ O'CLOCK A.M. BOOK 162 Deeds PAGE 277
 By *Lindsay Erdman* Recorder
 LEITHA H. ROSS Deputy

Prepared by: Erdman Engineering P.C. 708 Commerce Drive, P.O. Box 246, Decorah Iowa, 52101
 Phone (319)382-4194, Fax (319)382-3623

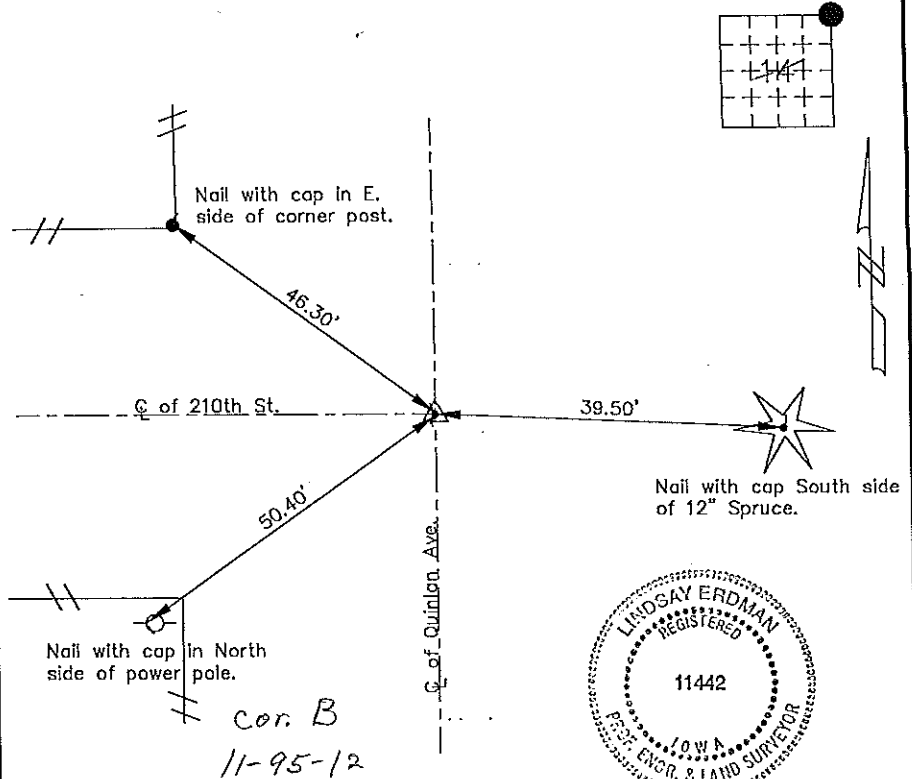
United States Public Land Survey Corner Certificate

11 of
 Land Survey Monuments situated in Section 14 Township 95 Range 12 of the Fifth Principle Meridian,
 Chickasaw County, Iowa. Previously recorded in does not apply in County Recorders Office.

(Show reason for preparing this certificate, the evidence and detailed procedures used in establishing the
 corner positions and monumentation found or placed.)

Monument Description and Remarks: This certificate is prepared in accordance with Section 355.11
 of the 1995 Code of Iowa. No previous certificate has been filed for this corner location. Based on
 County Engineer's Reference Ties we found a 5/8" bar at the NE corner of Sec. 14-95-12 down ±3"
 below the crushed rock surface. No reference ties were found, but the description of the 5/8" bar
 matched the County Engineer's Reference Ties for the NE corner of Sec. 14-95-12.

Plan-View
 (Show a minimum of three reference ties to durable physical objects, relevant monuments and physical conditions that will enable recovery of the corner.)



I hereby certify that the survey work was completed and this certificate was prepared by me or under by direct supervision and that I am a duly registered land surveyor under the laws of the State of Iowa.

Signature *Lindsay Erdman*
 Lindsay Erdman, P.E. and L.S.

Date: 8/17/96 Reg. No. 11442

My license will be renewed January 1, 1997

List Corners to be Indexed			
Corners	Section	Twp.	Range
NE	14	95	12

BOOK PAGE 277