

Prepared by & Return to Harold - Reicks Surveying, 19 East Main Street, New Hampton, IA 50655, Ph. 641-394-7125

### UNITED STATES PUBLIC LAND SURVEY CORNER CERTIFICATE

Land Survey Monuments situated in Section 15, Township 95 North, Range 12 West of the Fifth Principal Meridian, Chickasaw County, Iowa. 1., 2.) Not previously recorded in the County Recorder's office.

This certificate is being prepared in compliance with Iowa Code Chapter 355.11 because:

- 1 & 2  There is no certificate on file for this corner.
- There are no longer three valid ties of record.
- There are changes to reference ties of record.
- There is change of monumentation of record.
- To clarify description of record monument (ties).

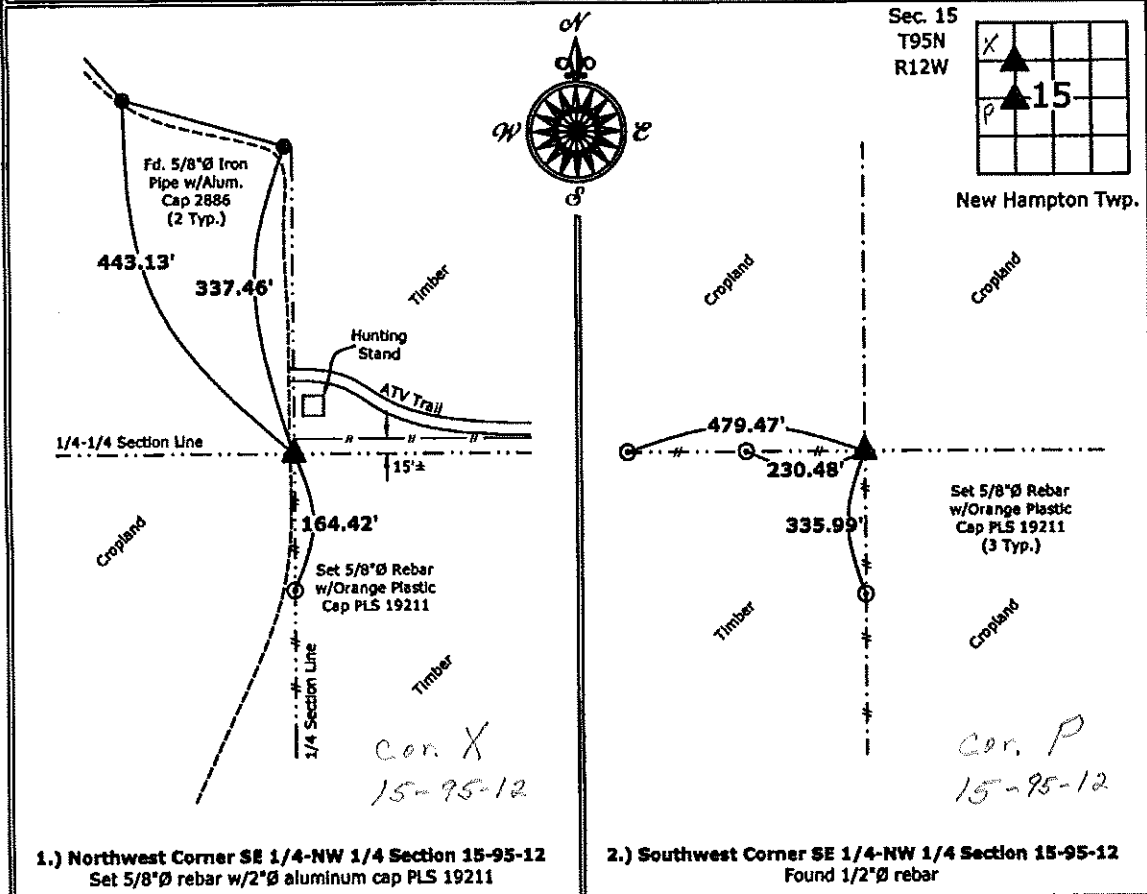
Monument Description and Remarks:

1.) Northwest Corner SE 1/4-NW 1/4: Set 5/8"Ø rebar with 2"Ø aluminum cap PLS 19211 at the intersection of Quarter-Quarter Section lines.

2.) Southwest Corner SE 1/4-NW 1/4: Found 1/2"Ø iron pin with information on a Survey and Plat made by Lindsay Erdman, recorded April 30, 1999, in Book 171, Page 302, on file in the Chickasaw County Recorder's office, New Hampton, Iowa.

#### PLAN - VIEW

(Show a minimum of three reference ties to durable physical objects, relevant monuments and physical conditions that will enable recovery of the corner.)



I hereby certify that this land surveying document was prepared and the related survey work was performed by me or under my direct personal supervision and that I am a duly licensed Land Surveyor under the laws of the State of Iowa.

*Kirk D. Reicks* 2-4-13  
 Kirk D. Reicks Date:  
 License number 19211  
 My license renewal date is December 31, 2014.  
 Sheets covered by this seal: Individual sheet only

List Corners to be Indexed			
Corners	Section	Twp.	Range
NW-SE-NW	15	95	12
SW-SE-NW	15	95	12

Project Number: 2013-029  
 FB: Chickasaw 5, Pgs. 28-30

*not filed with Recorder*

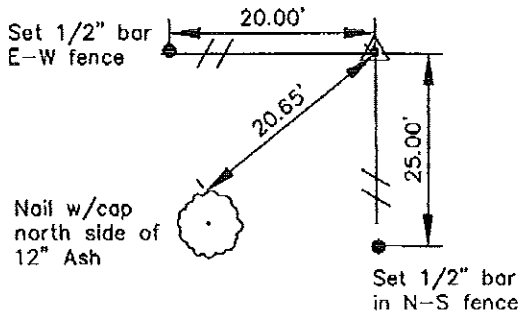
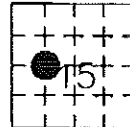
Prepared by: Erdman Engineering, P.C. 708 Commerce Drive, P.O. Box 246, Decorah, Iowa 52101  
Phone (319)382-4194, Fax (319)382-3623

### United States Public Land Survey Corner Certificate of

Land Survey Monuments situated in Section, 15 Township, 95 Range, 12 of the Fifth Principle Meridian,  
Chickasaw County, Iowa. Previously recorded in does not apply in County Recorders Office.

Monument Description and Remarks: This certificate is prepared in accordance with Section 355.11 of the 1995 Code of Iowa. No previous certificate has been filed for this corner location. We found no record of the W 1/8 Corner being set. We found no other evidence of the corner other than the existing corner post with fence lines running south and west. We set the W 1/4 Corner and found the E 1/4 Corner. We computed the distance the corner post was off the line line between the W 1/4 and the E 1/4 as 18.3' north of the line. Based on this we set a 1/2" bar w/cap Iowa RLS #11442 at the corner post at the W 1/8 Corner of Section 15, Township 95 North, Range 12 West.

### Plan-View



*Cor. P*

I hereby certify that the survey work was completed and this certificate was prepared by me or under my direct supervision and that I am a duly registered land surveyor under the laws of the State of Iowa.

Signature \_\_\_\_\_  
Lindsay Erdman, P.E. and L.S.

Date: \_\_\_\_\_ Reg. No. 11442

My license renewal date is December 31, 2000

List Corners to be Indexed			
Corners	Section	Twp.	Range
W 1/8	15	95	12