

2005-2663
12/09/2005

TeKIPPE ENGINEERING, P.C., 1919-210th Street PO Box 357, Manchester, Iowa 52057 Phone (563) 927-2080

UNITED STATES PUBLIC LAND SURVEY CORNER CERTIFICATE

OF

Land Survey Monuments situated in Section 15, Township 95 North, Range 12 West of the Fifth Principal Meridian, Chickasaw County, Iowa.
Previously recorded in none in County Recorder's Office.
(book, page, document number, etc.)

(Show reason for preparing this certificate, the evidence and detailed procedures used in establishing the corner positions and monumentation found or placed.)

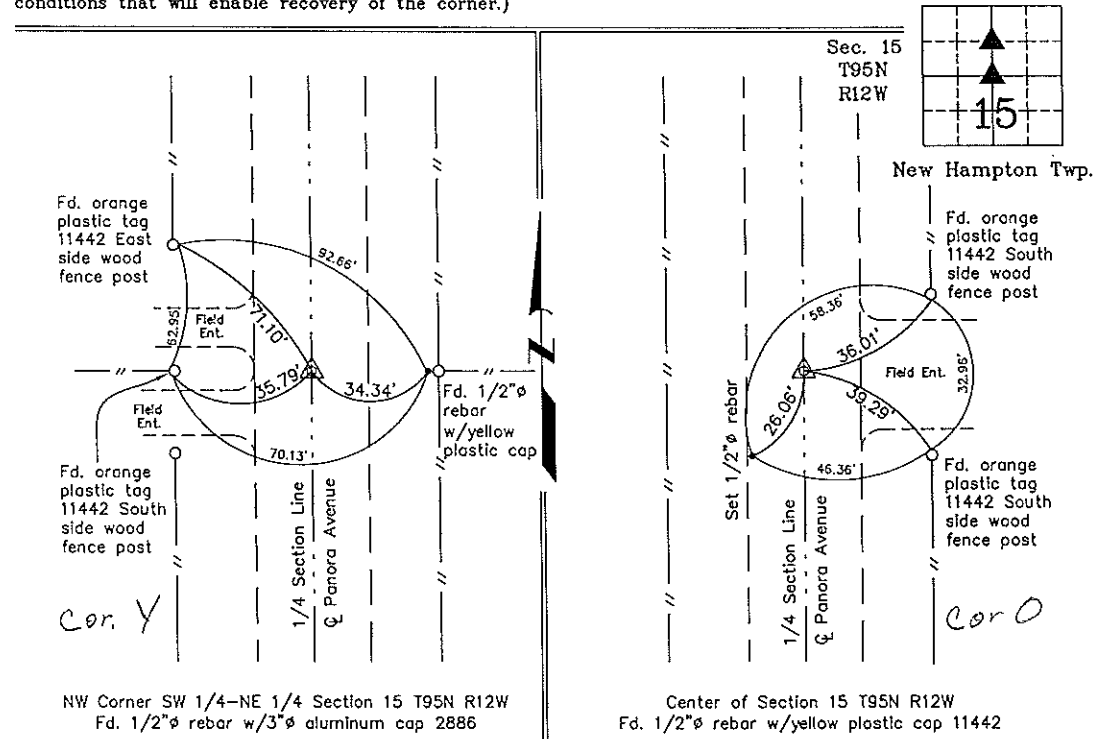
Monument Description and Remarks: **NW Corner SW 1/4-NE 1/4 Section 15 T95N R12W:**
Fd. 1/2"Ø rebar w/3"Ø aluminum cap 2886.

Center of Section 15 T95N R12W: Fd. 1/2"Ø rebar w/yellow plastic cap 11442.

Note: Found both corners from information obtained from a survey and plat made by Lindsey Erdman, recorded April 30th, 1999 in Book 171, Page 302 on file in the Chickasaw County recorders office, New Hampton, Iowa.

PLAN - VIEW

(Show a minimum of three reference ties to durable physical objects, relevant monuments and physical conditions that will enable recovery of the corner.)



I hereby certify that this land surveying document was prepared and the related survey work was performed by me or under my direct personal supervision and that I am a duly licensed Land Surveyor under the laws of the State of Iowa.

Paul R. Herold 12-7-05

Paul R. Herold Date
License number 15525
My license renewal date is December 31, 2006.
Sheets covered by this seal: Individual

List Corners to be Indexed			
Corners	Section	Twp.	Range
NW-SW-NE	15	95N	12W
CTR	15	95N	12W

X:\Section Corners\Sec. 15\15-95-12-HM.dwg
Project Number 05257.LS
FB. New Hampton 2 PG. 13-15

K.D.R.

not file with Recorder

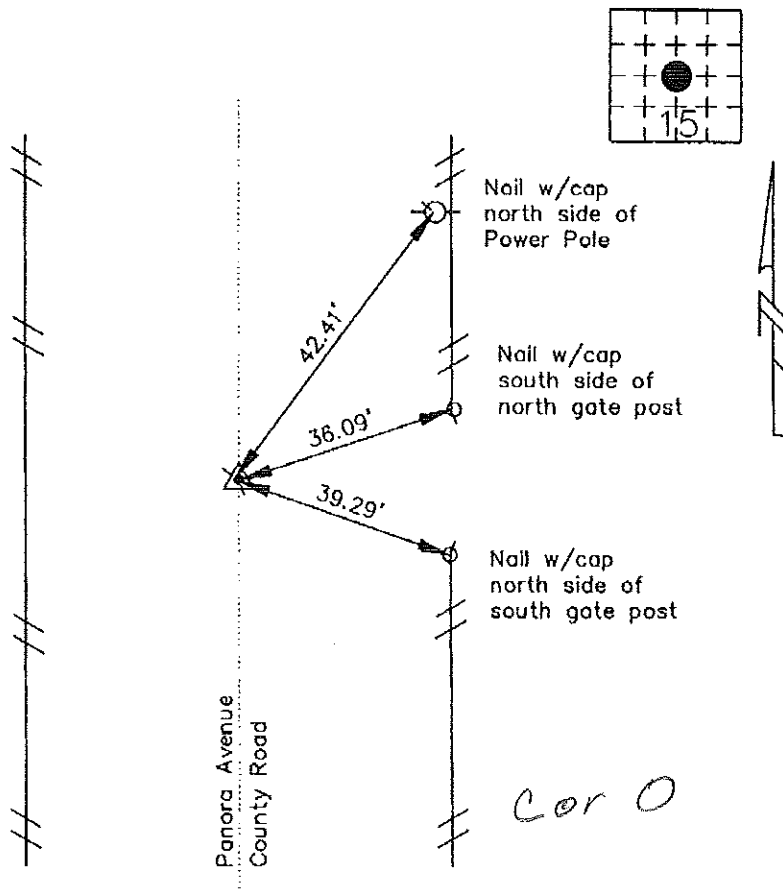
Prepared by: Erdman Engineering, P.C. 708 Commerce Drive, P.O. Box 246, Decorah, Iowa 52101
Phone (319)382-4194, Fax (319)382-3623

United States Public Land Survey Corner Certificate of

Land Survey Monuments situated in Section, 15 Township, 95 Range, 12 of the Fifth Principle Meridian,
Chickasaw County, Iowa. Previously recorded in does not apply in County Recorders Office.

Monument Description and Remarks: This certificate is prepared in accordance with Section 355.11 of the 1995 Code of Iowa. No previous certificate has been filed for this corner location. We found no record of the Center Section Corner being set. We found no evidence of the corner in field other than the existing centerline of the county road. Based on this we set the W 1/8 Corner and found the E 1/4 Corner, the N 1/8 Corner, and the S 1/4 Corner. Based on these corners we computed the position of the intersection of the north-south and east-west line as the theoretical location of the Center Section. This location fell 5.3' east of the centerline of the county road. Based on this we set a 1/2" bar w/cap Iowa RLS #11442 on line between the W 1/8 Corner and the E 1/4 at center of the 66' County right-of-way, at the Center Section of Section 15, Township 95 North, Range 12 West.

Plan-View



I hereby certify that the survey work was completed and this certificate was prepared by me or under my direct supervision and that I am a duly registered land surveyor under the laws of the State of Iowa.

Signature _____
Lindsay Erdman, P.E. and L.S.

Date: _____ Reg. No. 11442

List Corners to be Indexed			
Corners	Section	Twp.	Range
C.S.	15	95	12

Filed 7-9-02