

*Herold - Reicks Surveying, 18 East Main Street, New Hampton, IA 50659, Ph. 641-394-2725, Fax. 641-394-2718*

**UNITED STATES PUBLIC LAND SURVEY CORNER CERTIFICATE**

Land Survey Monuments situated in Section 14, Township 95 North, Range 12 West of the Fifth Principal Meridian, Chickasaw County, Iowa. 1.) Previously recorded in Bk. 162, Pg. 278 in the County Recorder's office. 2.) Not previously recorded in the County Recorder's office.

This certificate is being prepared in compliance with Iowa Code Chapter 355.11 because:

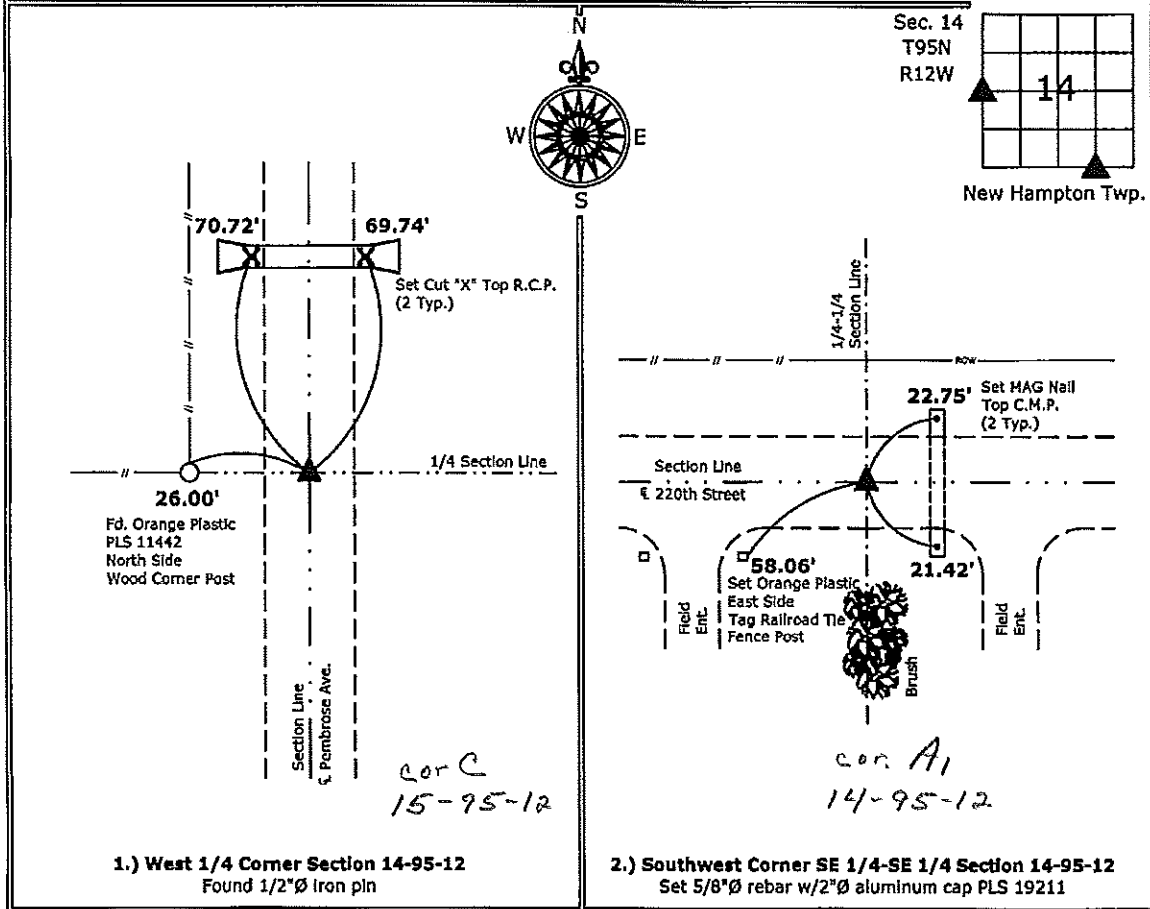
- 2.)  There is no certificate on file for this corner.
- There are no longer three valid ties of record.
- 1.)  There are changes to reference ties of record.
- There is change of monumentation of record.
- To clarify description of record monument (ties).

Monument Description and Remarks:

- 1.) **West 1/4 Corner:** Found 1/2"Ø Iron pin with information obtained from previous Section Corner Certificate.
- 2.) **Southwest Corner SE 1/4-SE 1/4:** Set 5/8"Ø rebar with 2"Ø aluminum cap PLS 19211 equidistant and online between the Southeast Corner and the South 1/4 Corner of Section.

**PLAN - VIEW**

(Show a minimum of three reference ties to durable physical objects, relevant monuments and physical conditions that will enable recovery of the corner.)



I hereby certify that this land surveying document was prepared and the related survey work was performed by me or under my direct personal supervision and that I am a duly licensed Land Surveyor under the laws of the State of Iowa.  
*Kirk D. Reicks* 11-30-10  
 Kirk D. Reicks Date:  
 License number 19211  
 My license renewal date is December 31, 2010.  
 Sheets covered by this seal: Individual sheet only

List Corners to be Indexed			
Corners	Section	Twp.	Range
W 1/4	14	95	12
SW-SE-SE	14	95	12

Project Number: 2010-156  
 FB: Chickasaw County 2, Pgs. 52-53

Section 15-95-12  
 As referred to in  
 Eng. Tie Book

DOCUMENT No. 00976 FILED FOR RECORD THE 4th DAY OF November 1996 AT 8:58 O'CLOCK A.M. BOOK 162 DEEDS PAGE 278 STATE OF IOWA, CHICKASAW COUNTY.  
 RECORDING FEE \$ 6.00 By Leitha N. Ross Recorder  
 TRANSFER FEE - \$          LEITHA N. ROSS Deputy

Prepared by: Erdman Engineering P.C. 708 Commerce Drive, P.O. Box 246, Decatur Iowa, 52101  
 Phone (319)382-4194, Fax (319)382-3623

### United States Public Land Survey Corner Certificate

15 of

Land Survey Monuments situated in Section 14 Township 95 Range 12 of the Fifth Principle Meridian, Chickasaw County, Iowa. Previously recorded in does not apply in County Recorders Office.

(Show reason for preparing this certificate, the evidence and detailed procedures used in establishing the corner positions and monumentation found or placed.)

Monument Description and Remarks: This certificate is prepared in accordance with Section 355.11 of the 1995 Code of Iowa. No previous certificate has been filed for this corner location. Based on County Engineer's Reference ties we found two corners of a PCC box culvert used as tie markers. From these ties we found a wooden stake. We set a 1/2" bar with cap RLS #11442 on the North side of the wooden stake at the W 1/4 corner of Sec. 14-95-12 ± 0.4' below the crushed rock surface.

---

Plan-View  
 (Show a minimum of three reference ties to durable physical objects, relevant monuments and physical conditions that will enable recovery of the corner.)

C of County Road.

C of South end of headwall.

C of South end of headwall.

Nail with cap on N. side of corner post.

Cor C  
15-95-12

LINDSAY ERDMAN  
REGISTERED  
11442  
IOWA  
PROF. ENGR. & LAND SURVEYOR

---

I hereby certify that the survey work was completed and this certificate was prepared by me or under my direct supervision and that I am a duly registered land surveyor under the laws of the State of Iowa.

Signature Lindsay Erdman  
 Lindsay Erdman, P.E. and L.S.

Date: 10/21/96 Reg. No. 11442

My license will be renewed January 1, 1997

List Corners to be Indexed			
Corners	Section	Twp.	Range
W 1/4	14	95	12

BOOK 162 PAGE 278