

2005-2664  
12/1/05

TEKIPPE ENGINEERING, P.C., 1919-210th Street PO Box 357 Manchester, Iowa 52057 Phone (563) 927-2060

UNITED STATES PUBLIC LAND SURVEY CORNER CERTIFICATE

OF

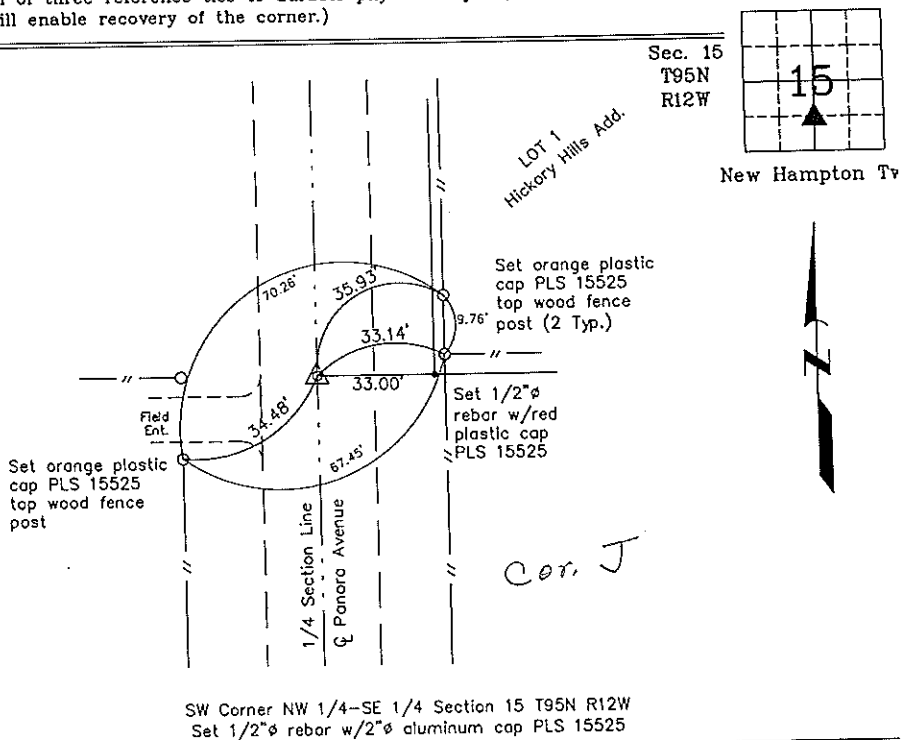
Land Survey Monuments situated in Section 15, Township 95 North, Range 12 West of the Fifth Principal Meridian, Chickasaw County, Iowa. Previously recorded in none in County Recorder's Office.  
(book, page, document number, etc.)

(Show reason for preparing this certificate, the evidence and detailed procedures used in establishing the corner positions and monumentation found or placed.)

Monument Description and Remarks: **SW Corner NW 1/4-SE 1/4 Section 15 T95N R12W.**  
Set 1/2"  $\phi$  rebar w/2"  $\phi$  aluminum cap PLS 15525 equidistant and on line between the Center and South Quarter Corner of Section 15 T95N R12W.

PLAN - VIEW

(Show a minimum of three reference ties to durable physical objects, relevant monuments and physical conditions that will enable recovery of the corner.)



SW Corner NW 1/4-SE 1/4 Section 15 T95N R12W  
Set 1/2"  $\phi$  rebar w/2"  $\phi$  aluminum cap PLS 15525



I hereby certify that this land surveying document was prepared and the related survey work was performed by me or under my direct personal supervision and that I am a duly licensed Land Surveyor under the laws of the State of Iowa.

Paul R. Herold 12-8-05  
Paul R. Herold Date  
License number 15525  
My license renewal date is December 31, 2008.  
Sheets covered by this seal: Individual

List Corners to be Indexed			
Corners	Section	Twp.	Range
SW-NW-SE	15	95N	12W

Project Number 05257.15  
FB. New Hampton 2 PG. 13-15

K.D.R.