

UNITED STATES PUBLIC LAND SURVEY CORNER CERTIFICATE

OF

Land Survey Monuments situated in Section 10, Township 95 North, Range 12 West, of the Fifth Principal Meridian, CHICKASAW County, Iowa. Previously recorded in NONE in County Recorder's Office.

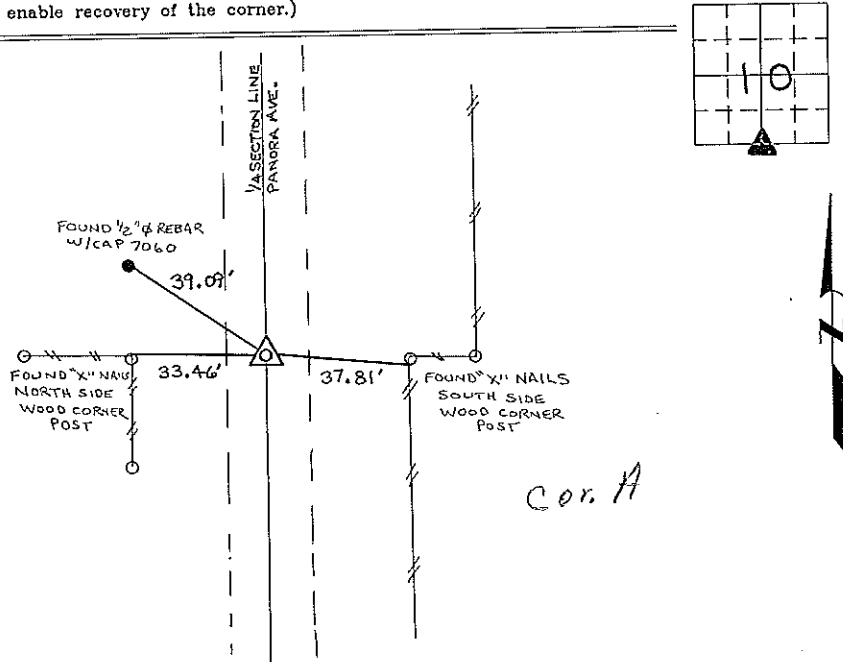
(book, page, document number, etc.)

(Show reason for preparing this certificate, the evidence and detailed procedures used in establishing the corner positions and monumentation found or placed.)

Monument Description and Remarks: S 1/4 CORNER SECTION 10 T 95 N R 9 W: FOUND 1/2" Ø REBAR w/ALUM. CAP 2886, AS SHOWN ON A SURVEY AND PLAN MADE BY L.P. EEDMAN, RECORDED IN JANUARY, 1990, DEED BOOK 144, PAGE 160, ON FILE IN THE CHICKASAW COUNTY RECORDERS OFFICE, NEW HAMPTON, IOWA.

PLAN - VIEW

(Show a minimum of three reference ties to durable physical objects, relevant monuments and physical conditions that will enable recovery of the corner.)



I hereby certify that the survey work was completed and this certificate was prepared by me or under my direct personal supervision and that I am a duly registered land surveyor under the laws of the state of Iowa.

Signature: Lyle G. Tekippe  
Lyle G. Tekippe

Date: 10-4-96 Reg. No. 7080  
My Registration Renewal Date is December 31, 1996

Seal



List Corners to be Indexed			
Corners	Section	Twp.	Range
S 1/4	10	95 N	12 W
Corner A 10-95-12			

*Placed in Tie Book 10/18/96*

Section 16-95-12  
 As referred to in  
 Engr. Tie Book

DOCUMENT No. **01082** FILED FOR RECORD THE 2nd DAY OF December, 1991 AT 10:20 O'CLOCK A.M. BOOK 148 DEEDS PAGE 249  
 RECORDING FEE \$ 5.00 STATE OF IOWA, CHICKASAW COUNTY  
 TRANSFER FEE \$ \_\_\_\_\_ By: Mary C. Murray Record  
 MARY C. MURRAY, Dep.

UNITED STATES PUBLIC LAND SURVEY CORNER CERTIFICATE

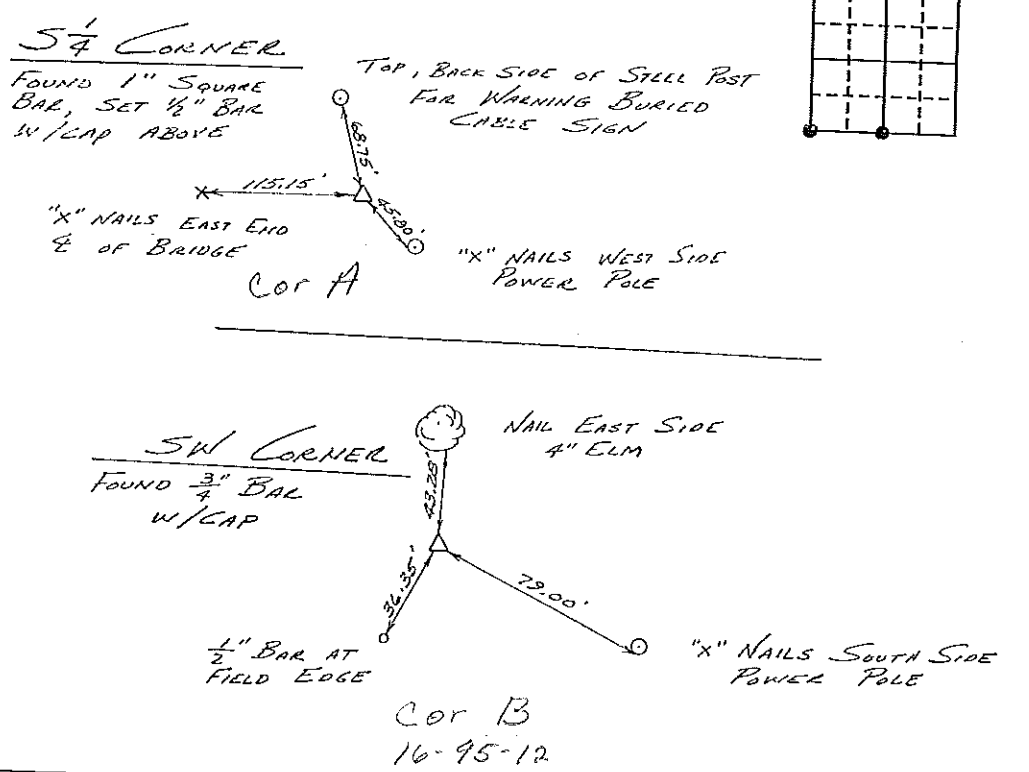
OF  
 Land Survey Monuments situated in Section 16, Township 95, Range 12 WEST, of the Fifth Principal Meridian, CHICKASAW County, Iowa  
 Previously recorded in Does Not Apply in County Recorder's Office  
(book, page, document number, etc.)

(Show reason for preparing this certificate, the evidence and detailed procedures used in establishing the corner positions and monumentation found or placed.)  
 Monument Description and Remarks: \_\_\_\_\_

\_\_\_\_\_  
 \_\_\_\_\_  
 \_\_\_\_\_  
 \_\_\_\_\_

PLAN - VIEW

(Show a minimum of three reference ties to durable physical objects, relevant monuments and physical conditions that will enable recovery of the corner.)



I hereby certify that the survey work was completed and this certificate was prepared by me or under my direct personal supervision and that I am a duly registered land surveyor under the laws of the state of Iowa.  
 Signature: L. P. Erdman  
 Name typed or printed: L. P. ERDMAN  
 Date: 10-29-91 Reg. No. 2886



Corners	List Corners to be Indexed Section	Twp	Range
SE 1/4	15	95	12
SW	"	"	"

*Placed in Tie Book*  
 12/3