

FILED 2002 - 3106
RECORDER'S OFFICE
CHICKASAW COUNTY, IOWA

2002 DEC 20 AM 9 08

CHUDY WESSERSMITH
COUNTY RECORDER

TeKIPPE ENGINEERING, P.C., 128 South Vine Street, West Union, Iowa 52175 Phone (563) 422-6131

UNITED STATES PUBLIC LAND SURVEY CORNER CERTIFICATE

OF

Land Survey Monuments situated in Section 10, Township 95 North, Range 12 West of the Fifth Principal Meridian, CHICKASAW County, Iowa. Previously recorded in none in County Recorder's Office.
(book, page, document number, etc.)

(Show reason for preparing this certificate, the evidence and detailed procedures used in establishing the corner positions and monumentation found or placed.)

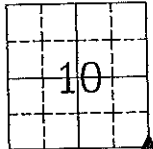
Monument Description and Remarks: SE Corner Section 10 T95N R12W: Set 1/2"Ø rebar w/2"Ø aluminum cap PLS 15525 by extending a line from the E 1/4 Corner Section 15-T95N-R12W through the mid-split of the ROW at 1/4-1/4 Section Line fences North of said E 1/4 Corner to the record distance of the SE Corner Section 10-T95N-R12W from the E 1/4 Corner of Section 10-T95N, R-12-W.

PLAN - VIEW

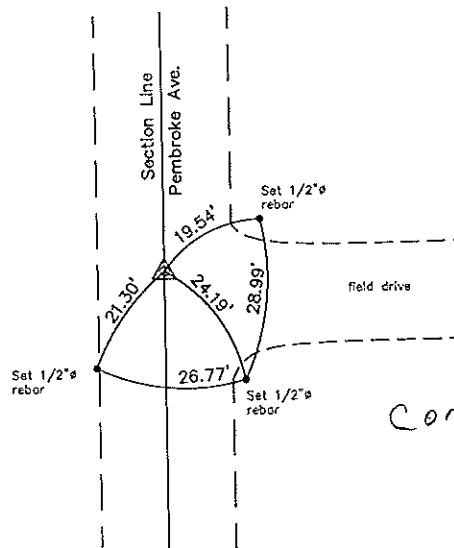
Project Number 02277.LS
FB. 46M PG. 75-77

(Show a minimum of three reference ties to durable physical objects, relevant monuments and physical conditions that will enable recovery of the corner.)

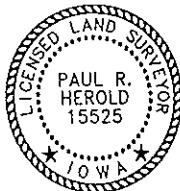
Sec. 10
T95N
R12W



New Hampton Twp



SE Corner Section 10 T95N R12W
Set 1/2"Ø rebar w/2"Ø aluminum cap PLS 15525



I hereby certify that this land surveying document was prepared and the related survey work was performed by me or under my direct personal supervision and that I am a duly licensed Land Surveyor under the laws of the State of Iowa.

Paul R. Herold 12-19-07
Paul R. Herold Date

License number 15525
My license renewal date is December 31, 2002.
Sheets covered by this seal: Individual

List Corners to be Indexed			
Corners	Section	Twp.	Range
SE	10	95N	12W

Filed 1-03-03

X:\Section Corners\Sec. 10\10-95-12y.dwg

County Engineer's
Cords