

2005-2663  
12/09/2005

TeKIPPE ENGINEERING, P.C., 1919-210th Street PO Box 357, Manchester, Iowa 52057 Phone (563) 927-2080

UNITED STATES PUBLIC LAND SURVEY CORNER CERTIFICATE

OF

Land Survey Monuments situated in Section 15, Township 95 North, Range 12 West of the Fifth Principal Meridian, Chickasaw County, Iowa. Previously recorded in none in County Recorder's Office. (book, page, document number, etc.)

(Show reason for preparing this certificate, the evidence and detailed procedures used in establishing the corner positions and monumentation found or placed.)

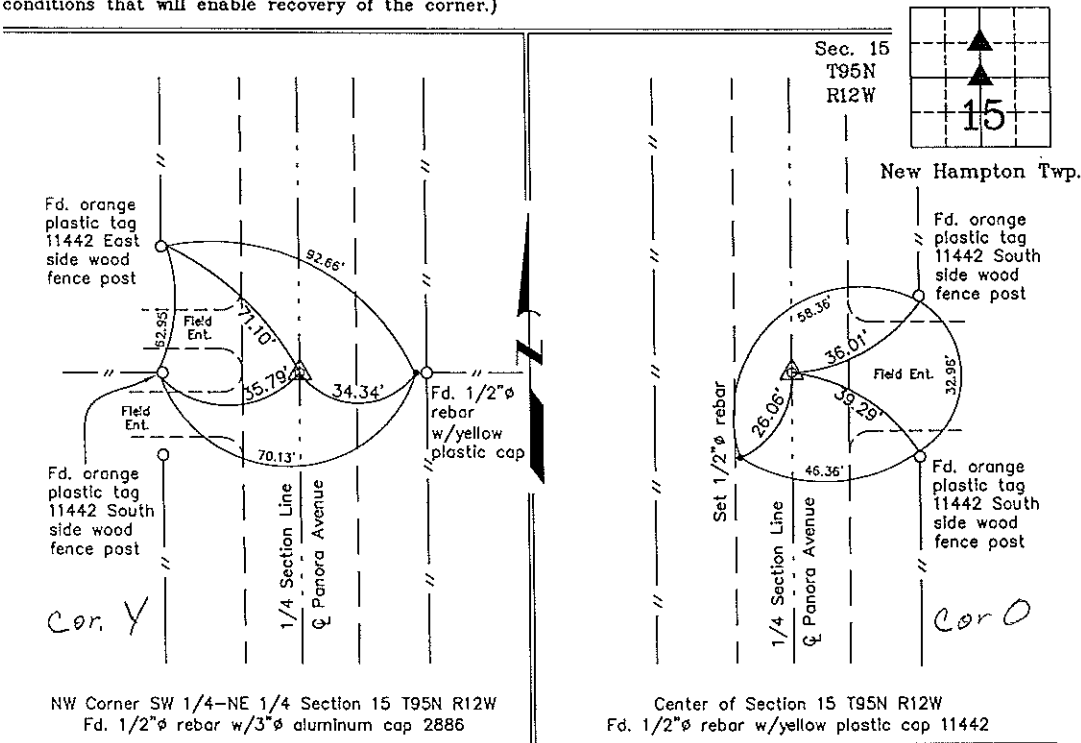
Monument Description and Remarks: **NW Corner SW 1/4-NE 1/4 Section 15 T95N R12W:**  
Fd. 1/2"Ø rebar w/3"Ø aluminum cap 2886.

**Center of Section 15 T95N R12W:** Fd. 1/2"Ø rebar w/yellow plastic cap 11442.

Note: Found both corners from information obtained from a survey and plat made by Lindsey Erdman, recorded April 30th, 1999 in Book 171, Page 302 on file in the Chickasaw County recorders office, New Hampton, Iowa.

PLAN - VIEW

(Show a minimum of three reference ties to durable physical objects, relevant monuments and physical conditions that will enable recovery of the corner.)



I hereby certify that this land surveying document was prepared and the related survey work was performed by me or under my direct personal supervision and that I am a duly licensed Land Surveyor under the laws of the State of Iowa.

*Paul R. Herold* 12-7-05

Paul R. Herold Date  
License number 15525  
My license renewal date is December 31, 2006.  
Sheets covered by this seal: Individual

List Corners to be Indexed			
Corners	Section	Twp.	Range
NW-SW-NE	15	95N	12W
CTR	15	95N	12W

X:\Section Corners\Sec. 15\15-95-12-HM.dwg  
Project Number 05257.LS  
FB. New Hampton 2 PG. 13-15

K.D.R.

COUNTY ENGINEER'S COPY