

Instrument #: 2023-1988  
 11/02/2023 02:09:16 PM Total Pages: 1  
 SCC SECTION CORNER CERTIFICATES  
 Recording Fee: \$ 7.00  
 Shirley Troyna, Recorder, Chickasaw County Iowa



Prepared by & Return to: Kirk D. Reicks, HRS, LLC, 10 East Main Street, New Hampton, IA 50659, Phone 641-394-2725

### United States Public Land Survey Corner Certificate

Land Survey Monument situated in  
 Section 16, Township 95 North, Range 12 West of the Fifth Principal Meridian, Chickasaw County, Iowa.  
 Not on file in the County Recorder's Office.

This certificate is being prepared in compliance with Iowa Code Chapter 355.11 because: {

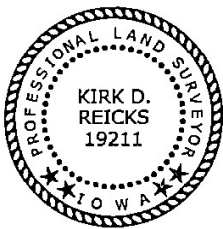
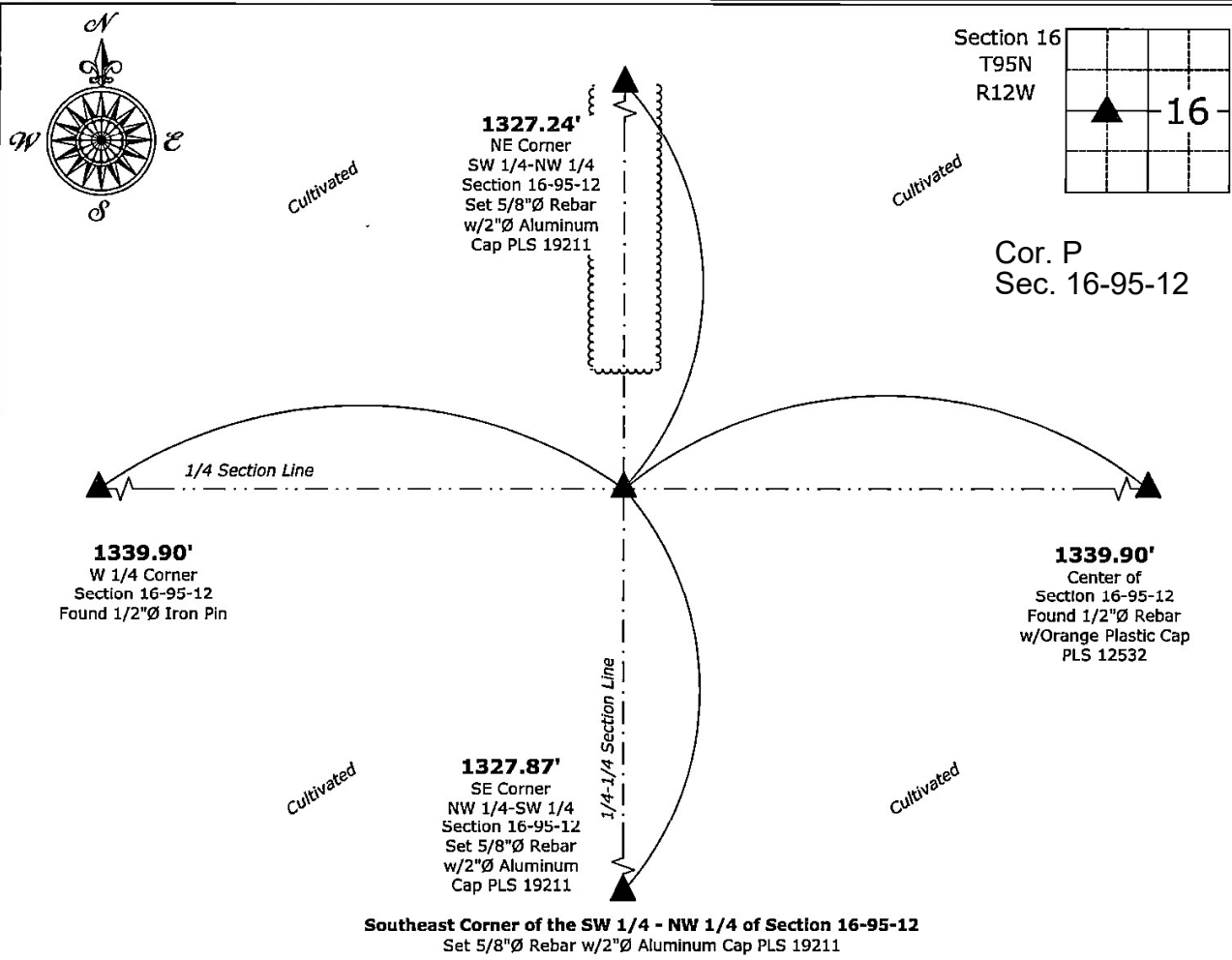
- There is no certificate on file for this corner.
- There are no longer three valid ties of record.
- There are changes to reference ties of record.
- There is change of monumentation of record.
- To clarify description of record monument (ties).

**Monument Description and Remarks:**

**Southeast Corner of the SW 1/4 - NW 1/4:** Set 5/8"Ø Rebar with 2"Ø Aluminum Cap PLS 19211 equidistant and on line between the West 1/4 Corner and the Center of said Section. Monument was buried 18"± to prevent its obliteration by field cultivation.

### Plan View - Not to Scale

(Show a minimum of three reference ties to durable physical objects, relevant monuments and physical conditions that will enable recovery of the corner.)



I hereby certify that this land surveying document was prepared and the related survey work was performed by me or under my direct personal supervision and that I am a duly licensed Land Surveyor under the laws of the State of Iowa.

*Kirk D. Reicks* 11-1-2023  
 Kirk D. Reicks Date:  
 License number 19211  
 My license renewal date is December 31, 2024.  
 Sheets covered by this seal: Individual sheet only

List Corner to be Indexed			
Corner	Section	Township	Range
SE-SW-NW	16	95	12
Project Number: 2023-120			
FB: Chickasaw 12, Page(s) 33-34			

File: S:\\_ Projects - NHO\County Control Systems - NHO\CHICKASAW\CHICK-28 (New Hampton)\CHICK-28 - 2022 - SE-R1.dwg, 10/31/2023 8:18:03 AM