

FILED 2004-0375

RECORDER'S OFFICE  
CHICKASAW COUNTY, IOWA

2004 FEB 20 AM 9 04  
*fee 11.00*

CINDY MESSERSMITH  
COUNTY RECORDER

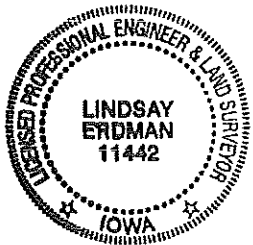
Prepared by: Erdman Engineering, P.C., 708 Commerce Drive, P.O. Box 246, Decorah, Iowa 52101 (563) 382-4194

United States Public Land Survey Corner Certificate  
of

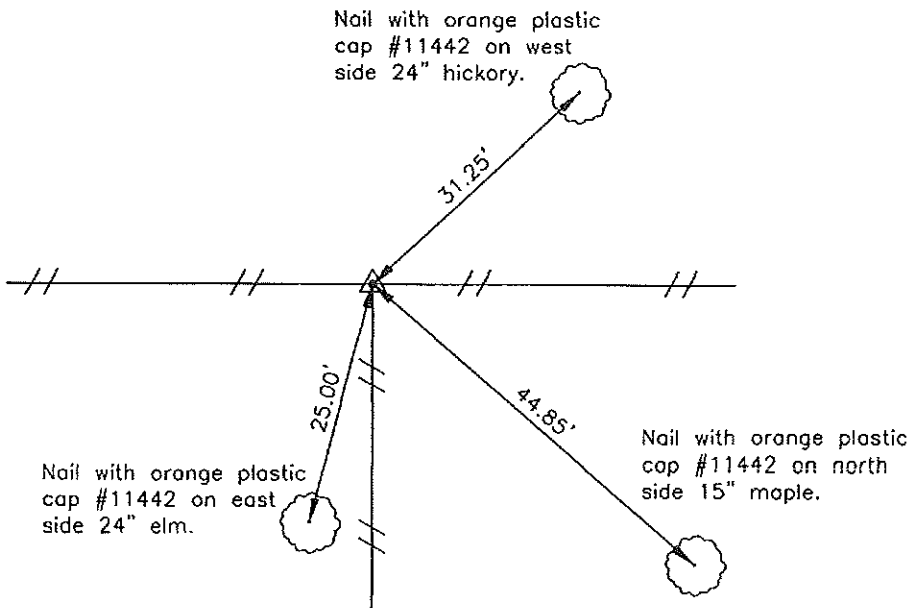
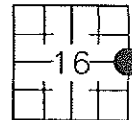
Land Survey Monuments situated in Section 16, Township 95 North, Range 12 West of the 5th Principal Meridian in Chickasaw County, Iowa. Previously recorded in does not apply in the county Recorder's Office.

Monument Description and Remarks: This certificate is prepared in accordance with Section 193C of the Code of Iowa. No previous certificate has been filed for this corner location. Based on a plot of survey recorded in Book 171, Page 302 in the Chickasaw County Recorder's Office, we found a 1/2" diameter bar with yellow plastic cap #11442 at the fence corner that matches the description of the monument used previously as the W 1/4 Corner of Section 15. We accepted the monument as the E 1/4 Corner of Section 16, Township 95 North, Range 12 West.

Plan-View



COR. C



I hereby certify that the survey work was completed and this certificate was prepared by me or under my direct supervision and that I am a duly registered land surveyor under the laws of the State of Iowa.

Signature: *Lindsay Erdman*  
Lindsay Erdman, P.E. and P.L.S.  
Date: *2/18/04* Reg. No. 11442

My license renewal date is December 31, 2004

Corner(s) to be Indexed

Corner	Section	Township	Range
E 1/4	16	95N	12W

Not filed with Recorder

Section 16-95-12  
As referred to in  
Engg Tie Book

Prepared by: Erdman Engineering, P.C. 708 Commerce Drive, P.O. Box 246, Decorah, Iowa 52101  
Phone (319)382-4194, Fax (319)382-3823

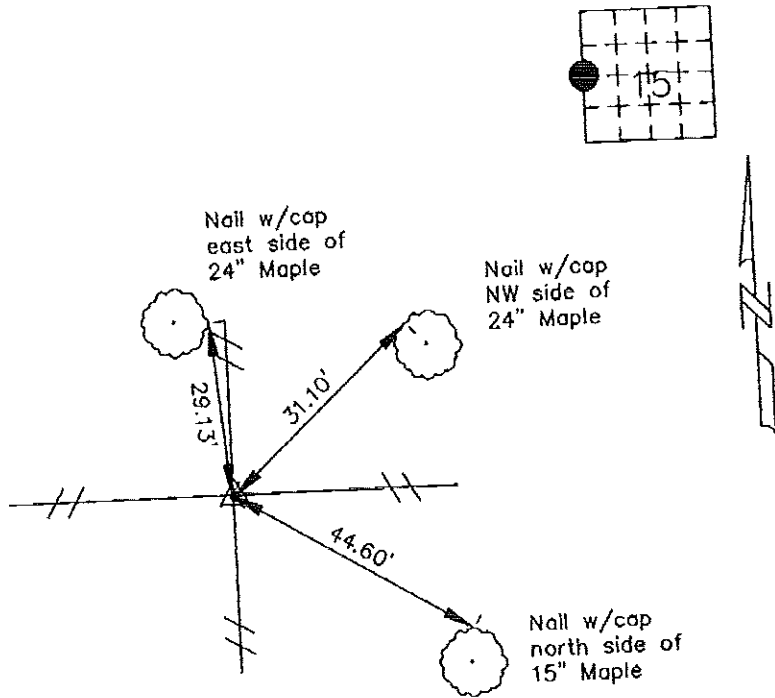
### United States Public Land Survey Corner Certificate

16 of

Land Survey Monuments situated in Section, 15 Township, 95 Range, 12 of the Fifth Principle Meridian,  
Chickosaw County, Iowa. Previously recorded in does not apply in County Recorders Office.

Monument Description and Remarks: This certificate is prepared in accordance with Section 355.11 of the 1995 Code of Iowa. No previous certificate has been filed for this corner location. We found no record of the W 1/4 Corner being set. We found no other evidence of the corner other than the existing corner post with fence lines running north, south, east and west. Based on this we set a 1/2" bar w/cap Iowa RLS #11442 on the northeast side of the corner post at the W 1/4 Corner of Section 15, Township 95 North, Range 12 West.

### Plan-View



Cor. C  
16-95-12

I hereby certify that the survey work was completed and this certificate was prepared by me or under my direct supervision and that I am a duly registered land surveyor under the laws of the State of Iowa.

Signature \_\_\_\_\_  
Lindsay Erdman, P.E. and L.S.

Date: \_\_\_\_\_ Reg. No. 11442

My license renewal date is December 31, 2000

Corners	List Corners to be Indexed		
	Section	Twp.	Range
W 1/4	15	95	12

m:\es\c:\legal\sect\chick\89029\89029.dwg