

2001 DEC 26 AM 8 53

CINDY MESSERSMITH
 COUNTY RECORDER

TeKIPPE ENGINEERING, P.C., 128 South Vine Street, West Union, Iowa 52175 Phone (563) 422-5131

UNITED STATES PUBLIC LAND SURVEY CORNER CERTIFICATE

OF

Land Survey Monuments situated in Section 9, Township 95 North, Range 12 West of the Fifth Principal Meridian, CHICKASAW County, Iowa. Previously recorded in none in County Recorder's Office.
(book, page, document number, etc.)

(Show reason for preparing this certificate, the evidence and detailed procedures used in establishing the corner positions and monumentation found or placed.)

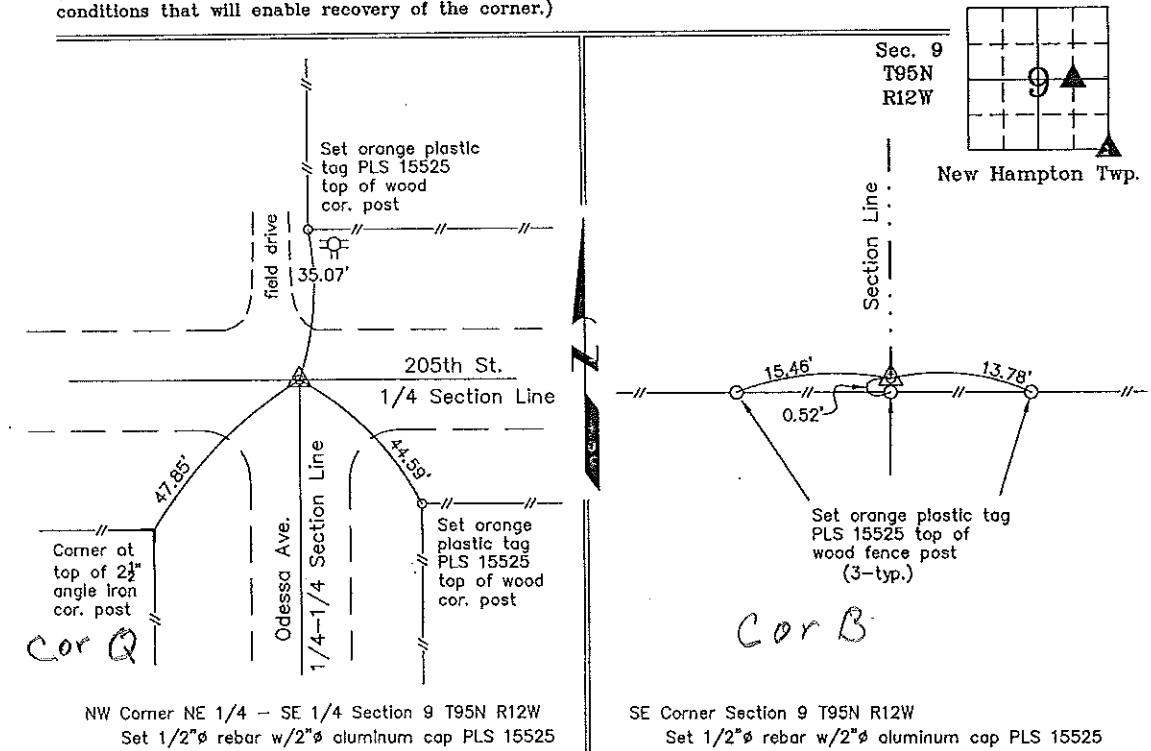
Monument Description and Remarks: NW Corner NE 1/4 - SE 1/4 Section 9 T95N R12W: Set 1/2"Ø rebar w/2"Ø aluminum cap PLS 15525 at the record location using data obtained from a Survey and Plat made by Lyle TeKippe on January 29, 1988.

SE Corner Section 9 T95N R12W: Set 1/2"Ø rebar w/2"Ø aluminum cap PLS 15525 at an existing division post after comparing the position to adjacent corners. There is no data available for this corner on record since the original survey.

PLAN - VIEW

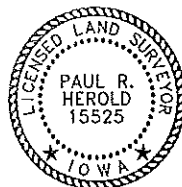
Project Number 01232.IS
 FB. 48 H PG. 62-63

(Show a minimum of three reference ties to durable physical objects, relevant monuments and physical conditions that will enable recovery of the corner.)



NW Corner NE 1/4 - SE 1/4 Section 9 T95N R12W
 Set 1/2"Ø rebar w/2"Ø aluminum cap PLS 15525

SE Corner Section 9 T95N R12W
 Set 1/2"Ø rebar w/2"Ø aluminum cap PLS 15525



I hereby certify that this land surveying document was prepared and the related survey work was performed by me or under my direct personal supervision and that I am a duly licensed Land Surveyor under the laws of the State of Iowa.

Paul R. Herold 12-21-01
 Paul R. Herold Date
 License number 15525
 My license renewal date is December 31, 2002.
 Sheets covered by this seal: Individual

List Corners to be Indexed			
Corners	Section	Twp.	Range
NW-NE-SE	9	95N	12W
SE	9	95N	12W

Entered 1-10-02

County Engineer's
 Seal

Section 16-95-12
 As referred to in
 Engr. Tie Book

DOCUMENT No. **01082** FILED FOR RECORD THE 2nd DAY OF December, 1991 AT 10:20 O'CLOCK A.M. BOOK 148 DEEDS PAGE 249
 RECORDING FEE \$ 5.00 STATE OF IOWA, CHICKASAW COUNTY
 TRANSFER FEE \$ _____ By: Mary C. Murray Record
 MARY C. MURRAY, Dep.

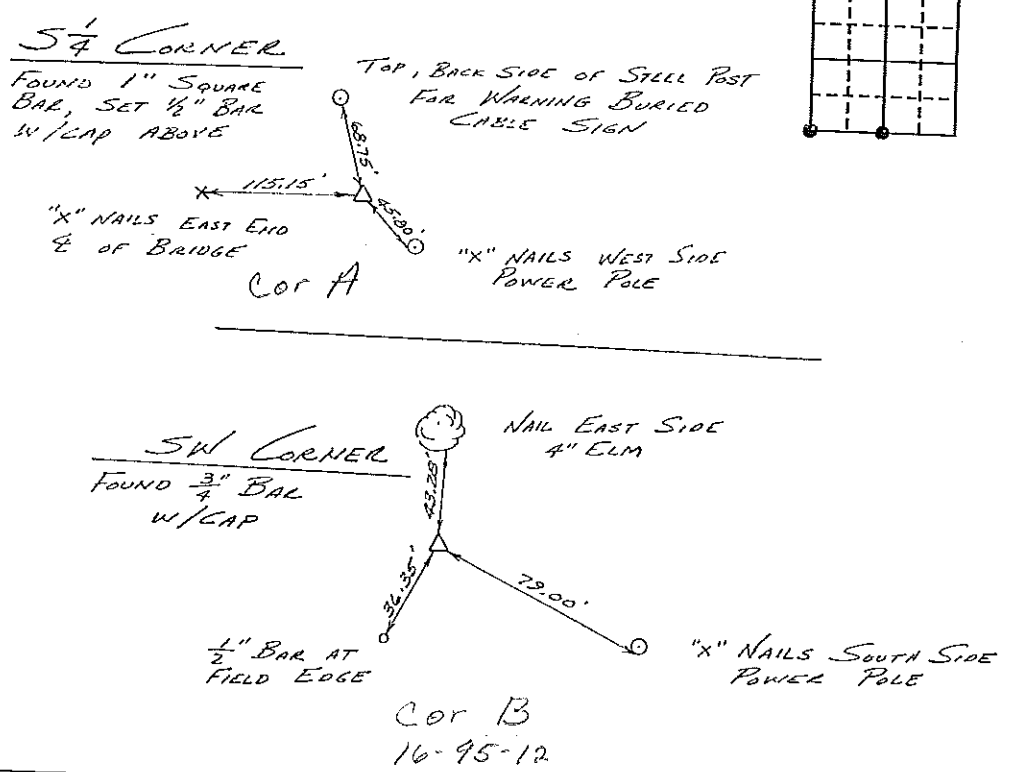
UNITED STATES PUBLIC LAND SURVEY CORNER CERTIFICATE

OF
 Land Survey Monuments situated in Section 16, Township 95, Range 12 WEST, of the Fifth Principal Meridian, CHICKASAW County, Iowa
 Previously recorded in Does Not Apply in County Recorder's Office
(book, page, document number, etc.)

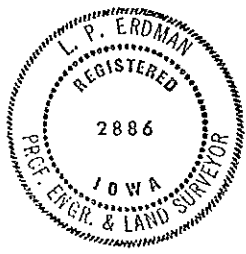
(Show reason for preparing this certificate, the evidence and detailed procedures used in establishing the corner positions and monument description found or placed.)
 Monument Description and Remarks: _____

PLAN - VIEW

(Show a minimum of three reference ties to durable physical objects, relevant monuments and physical conditions that will enable recovery of the corner.)



I hereby certify that the survey work was completed and this certificate was prepared by me or under my direct personal supervision and that I am a duly registered land surveyor under the laws of the state of Iowa.
 Signature: L. P. Erdman
 Name typed or printed: L. P. ERDMAN
 Date: 10-29-91 Reg. No. 2886



Corners	List Corners to be Indexed Section	Twp	Range
SE 1/4	15	95	12
SW	"	"	"

Placed in Tie Book
 12/3