

FILED 2004-1596
 RECORDER'S OFFICE
 CHICKASAW COUNTY, IOWA
Fee \$7.00
 2004 JUL 9 AM 8 44

CINDY MESSERSMITH
 COUNTY RECORDER

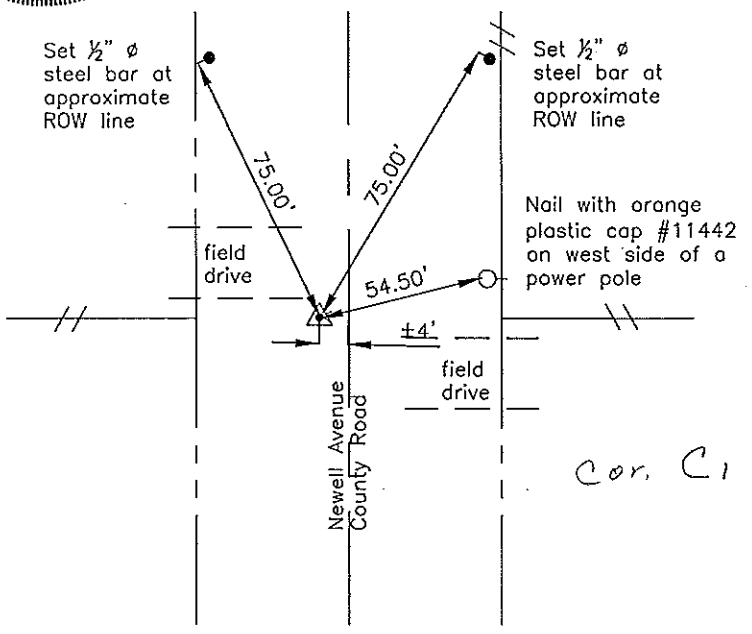
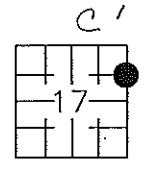
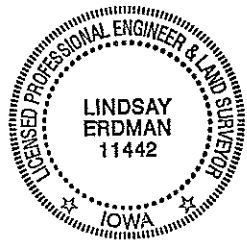
Prepared by: Erdman Engineering, P.C., 708 Commerce Drive, P.O. Box 246, Decorah, Iowa 52101 (563) 382-4194

United States Public Land Survey Corner Certificate
 of

Land Survey Monuments situated in Section 17, Township 95, Range 12 West of the 5th Principal Meridian in Chickasaw County, Iowa. Previously recorded in does not apply in the county Recorder's Office.

Monument Description and Remarks: This certificate is prepared in accordance with Section 193C of the Code of Iowa. No previous certificate has been filed for this corner location. We found no record of the ENE 1/8 Corner being set. We found no evidence of a monument in the field other than the county road and the fence lines running east and west. We found the NE corner and the E 1/4 corner. From these monuments we set a 1/2" diameter steel bar with 1 1/2" aluminum cap #11442 on line and equidistant between the NE Corner and the E 1/4 Corner as the ENE 1/8 Corner of Section 17, Township 95 North, Range 12 West.

Plan-View



I hereby certify that the survey work was completed and this certificate was prepared by me or under my direct supervision and that I am a duly registered land surveyor under the laws of the State of Iowa.

Signature: *Lindsay Erdman*
 Lindsay Erdman, P.E. and P.L.S. Iowa License Number 11442

Date: 7/6/04

My license renewal date is December 31, 2004

Corner(s) to be Indexed

Corner	Section	Township	Range
ENE 1/8	17	95	12