

FILED 2001-1720
 RECORDER'S OFFICE
 CHICKASAW COUNTY, IOWA

2001 AUG 14 AM 9.55

CINDY MESSERSMITH
 COUNTY RECORDER

TeKIPPE ENGINEERING, P.C., 128 South Vine Street, West Union, Iowa 52175 Phone (563) 422-6131

UNITED STATES PUBLIC LAND SURVEY CORNER CERTIFICATE

OF

Land Survey Monuments situated in Section 8, Township 95 North, Range 12 West of the Fifth Principal Meridian, CHICKASAW County, Iowa. Previously recorded in none in County Recorder's Office.
(book, page, document number, etc.)

(Show reason for preparing this certificate, the evidence and detailed procedures used in establishing the corner positions and monumentation found or placed.)

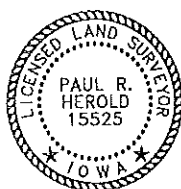
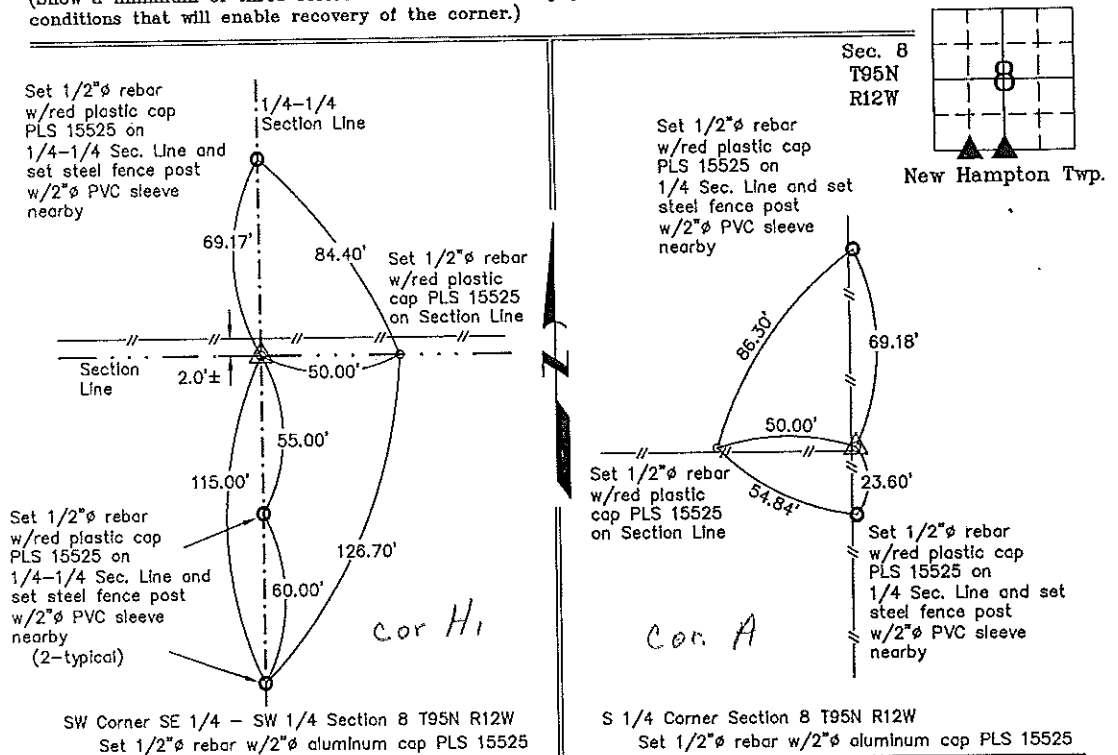
Monument Description and Remarks: SW Corner SE 1/4 - SW 1/4 Section 8 T95N R12W:
Set 1/2"Ø rebar w/2"Ø aluminum cap PLS 15525 equidistant and on line between the SW Corner and the S 1/4 Corner.

S 1/4 Corner Section 8 T95N R12W: Set 1/2"Ø rebar w/2"Ø aluminum cap PLS 15525 at an existing fence corner after comparing the distances to adjacent Section Corners.

PLAN - VIEW

Project Number 0114.15
 FB New Hampton 1 PG. 16-21

(Show a minimum of three reference ties to durable physical objects, relevant monuments and physical conditions that will enable recovery of the corner.)



I hereby certify that this land surveying document was prepared by me or under my direct personal supervision and that I am a duly Licensed Land Surveyor under the laws of the State of Iowa.

Paul R. Herold 8-13-01
 Paul R. Herold Date
 License number 15525
 My license renewal date is December 31, 2002.
 Sheets covered by this seal: Individual

List Corners to be Indexed			
Corners	Section	Twp.	Range
SW-SE-SW	8	95N	12W
S 1/4	8	95N	12W

Filed 10-11-01

County Engineer