

DOCUMENT NO. 02035 FILED FOR RECORD THE 2nd DAY OF MAY 1996 AT 8:58 P.M. Walter J. Ross Recorder  
 RECORDING FEE \$ 6.00 O'CLOCK A.M. BOOK 160 DEEDS, PAGE 429 Walter J. Ross Deputy  
 TRANSFER FEE \$ \_\_\_\_\_

UNITED STATES PUBLIC LAND SURVEY CORNER CERTIFICATE

OF 13  
 Land Survey Monuments situated in Section 18, Township 95 N, Range 11 W,  
 of the Fifth Principal Meridian, CHCKASAW County, Iowa. Previously recorded  
 in \_\_\_\_\_ in County Recorder's Office.

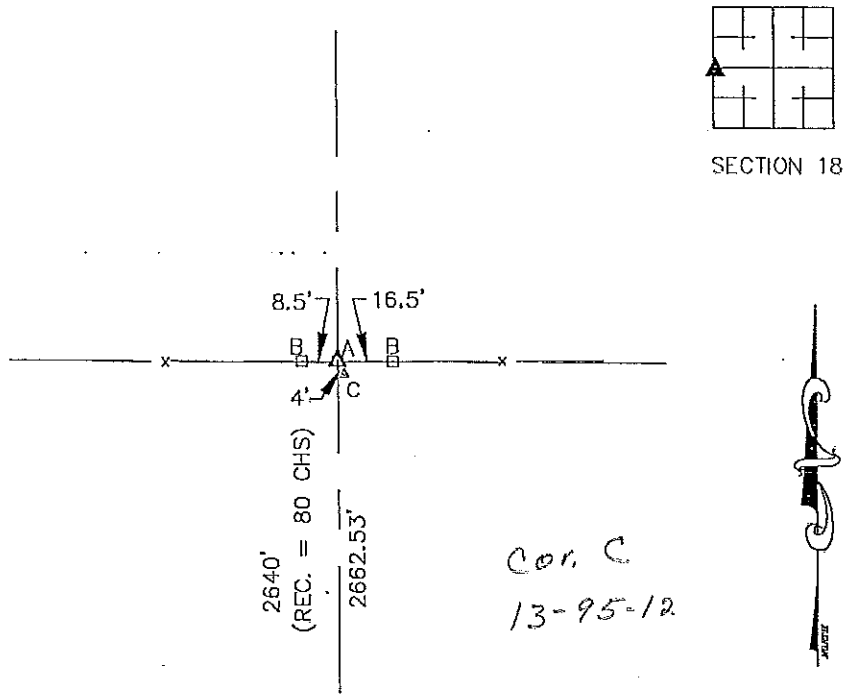
(book, page, document number, etc.)  
 (Show reason for preparing this certificate, the evidence and detailed procedures used in establishing the corner positions and monumentation found or placed.)

Monument Description and Remarks:  
A - REBAR SET ON EAST SIDE OF FENCE CORNER POST USED  
B - WOOD FENCE POST  
C - HIGH POINT OF LARGE STONE  
COUNTY REC. = STONE (NOT FOUND) - ORIG. COR. POSTw/ PIT

Section 13-95-12  
 As referred to in  
 Eng. Tr. Book.

PLAN VIEW

(Show a minimum of three reference ties to durable physical objects, relevant monuments and physical conditions that will enable recovery of the corner.)

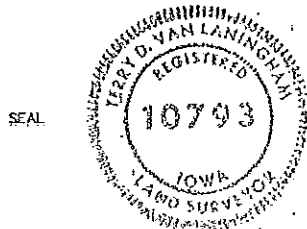


Cor. C  
 13-95-12

W 1/4 CORNER  
 18 - 95 - 11

I hereby certify that this land surveying document was prepared by me or under my direct personal supervision and that I am a duly Registered Land Surveyor under the laws of the State of Iowa.

Signature: Terry D. Van Laningham  
 Terry D. Van Laningham, PLS  
 Date: Apr. 30, 1996 Reg. No. 10793  
 My registration renewal date is December 31, 1995.



List Corners to be Indexed

Corners	Section	Township	Range
W 1/4 COR.	18	95 N	11 W

TERRY D. VAN LANINGHAM, PLS. INC.  
 810 12TH AVE. NW, WAVERLY, IOWA (319) 352-2132