

# UNITED STATES PUBLIC LAND SURVEY CORNER CERTIFICATE

OF

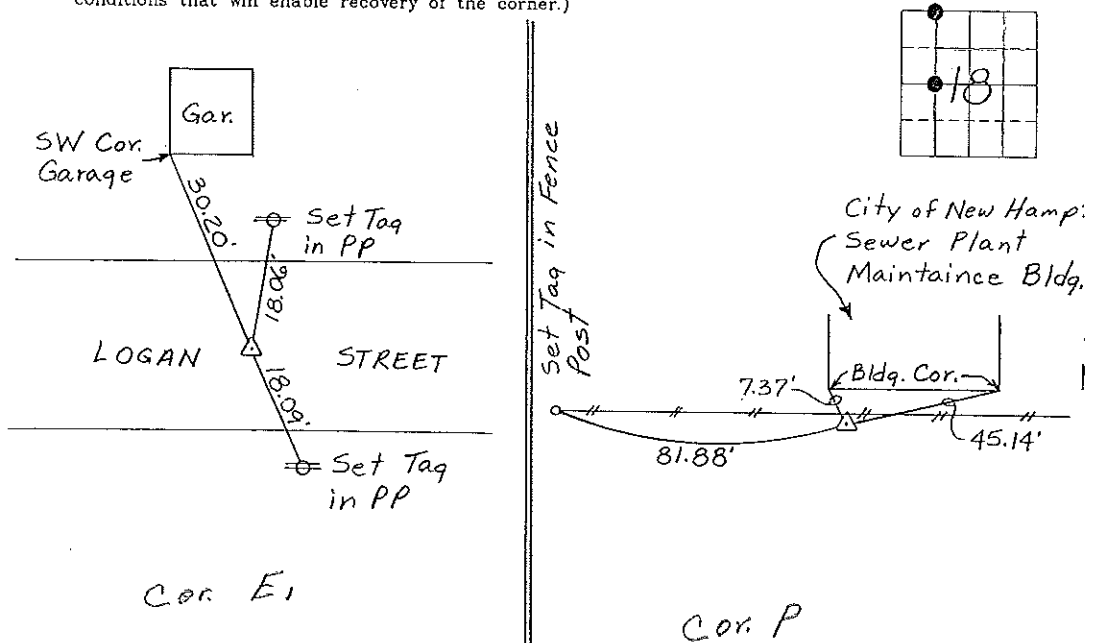
Land Survey Monuments situated in Section 18, Township 95 North, Ra. 12 West, of the Fifth Principal Meridian, CHICKASAW County, Io  
 Previously recorded in NONE in County Recorder's Off  
(book, page, document number, etc.)

(Show reason for preparing this certificate, the evidence and detailed procedures used in establishing the corner positions and monumentation found or placed.)

Monument Description and Remarks: NW CORNER, NE 1/4 - NW 1/4, SECTION 18 - T95N - R12W: Cut 'X' in Conc. Street.  
SW CORNER, SE 1/4 - NW 1/4, SECTION 18 - T95N - R12W: Set 1/2" φ Rebar with cap, Corner is 1.0' South of East-West Fence.

## PLAN - VIEW

(Show a minimum of three reference ties to durable physical objects, relevant monuments and physical conditions that will enable recovery of the corner.)



NW CORNER  
 NE 1/4 - NW 1/4, SECTION 18 - T95N - R12W

SW CORNER  
 SE 1/4 - NW 1/4, SECTION 18 - T95N - R12W

I hereby certify that the survey work was completed and this certificate was prepared by me or under my direct personal supervision and that I am a duly registered land surveyor under the laws of the state of Iowa.

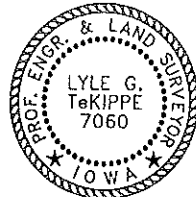
Signature: Lyle G. TeKippe

Lyle G. TeKippe

Date: 7-12-95 Reg. No. 7060

My Registration Renewal Date is December 31, 1996

Seal



List Corners to be indexed			
Corners	Section	Twp.	Range
NW COR.			
NE 1/4 - NW 1/4	18	95N	12W
SW COR.			
SE 1/4 - NW 1/4	18	95N	12W

*Placed in Tee Bush*