

UNITED STATES PUBLIC LAND SURVEY CORNER CERTIFICATE

OF  
 Land Survey Monuments situated in Section 18, Township 95 North, Range  
12 West of the Fifth Principal Meridian, CHICKASAW County, Iowa  
 Previously recorded in none in County Recorder's Office  
(book, page, document number, etc.)

(Show reason for preparing this certificate, the evidence and detailed procedures used in establishing the corner positions and monumentation found or placed.)

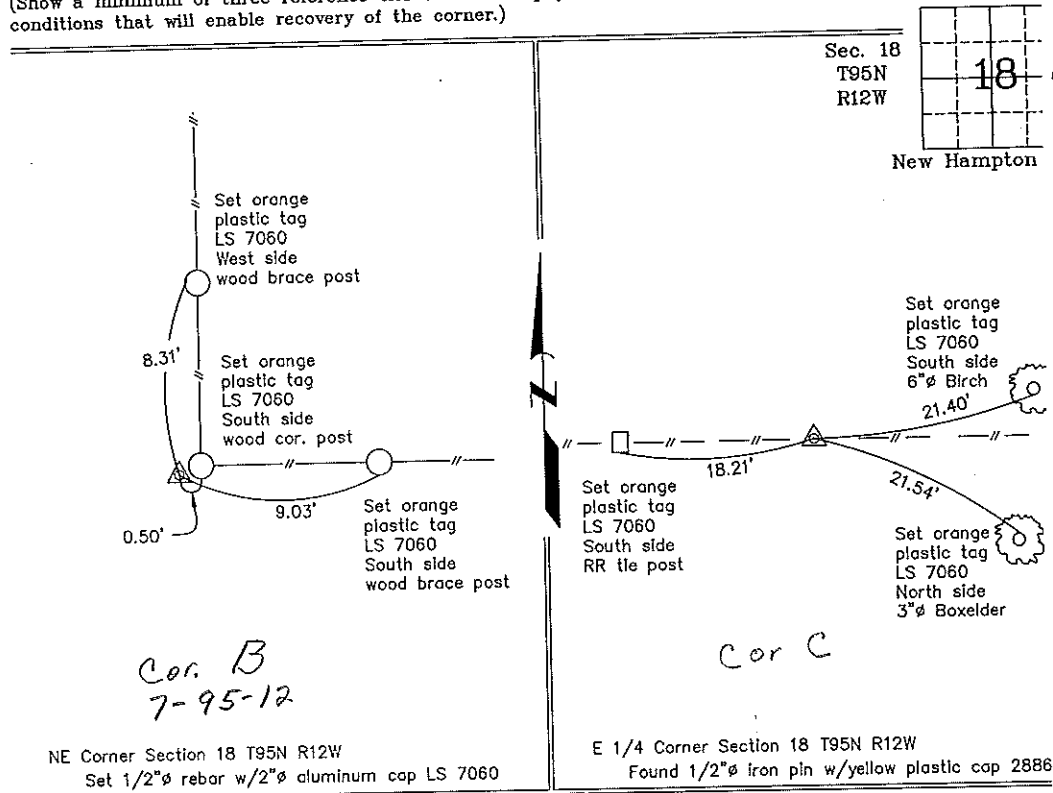
Monument Description and Remarks: NE Corner Section 18 T95N R12W: Set 1/2"Ø rebar w/2"Ø aluminum cap LS 7060 by extending a line from the N 1/4 Corner through the NW Cor. NE 1/4-NE 1/4 and intersecting the N/S fence on the East line of Section

E 1/4 Corner Section 18 T95N R12W: Found 1/2"Ø iron pin w/yellow plastic cap 2886 with information obtained from a Survey and Plat made by L.P. Erdman filed in the Chickasaw County Recorder's Office on December 7, 1990 in Deeds Book 146, Page 126

PLAN - VIEW

Project Number 00054.  
 FR 460 PG 44-4

(Show a minimum of three reference ties to durable physical objects, relevant monuments and physical conditions that will enable recovery of the corner.)



I hereby certify that this land surveying document was prepared and the related survey work was performed by me or under my direct personal supervision and that I am a duly licensed Land Surveyor under the laws of the State of Iowa.  
*Lyle G. TeKippe* 4-20-00  
 Lyle G. TeKippe Date  
 License number 7060  
 My license renewal date is December 31, 2000.  
 Sheets covered by this seal: Individual

List Corners to be Indexed			
Corners	Section	Twp.	Range
NE	18	95N	12W
E 1/4	18	95N	12W

Entered 4-26-00