

Chickasaw Co. Recorder
 Cindy Messersmith
Fee Book 2009-0771
 04/17/2009 @12:12PM
 SCC SEC COR CERT # Pages: 1
 Book: Page: # Pages: 1
 Total Fees: \$7.00

TeKIPPE ENGINEERING, P.C., 128 South Vine Street, West Union, Iowa 52175 Phone (563) 422-5131

UNITED STATES PUBLIC LAND SURVEY CORNER CERTIFICATE

OF

Land Survey Monuments situated in Section 19, Township 95 North, Range 12 West of the Fifth Principal Meridian, Chickasaw County, Iowa.

Previously recorded in (1) Doc. #2004-0476 (2) Doc. #2002-3134 in County Recorder's Office.
 (book, page, document number, etc.)

(Show reason for preparing this certificate, the evidence and detailed procedures used in establishing the corner positions and monumentation found or placed.)

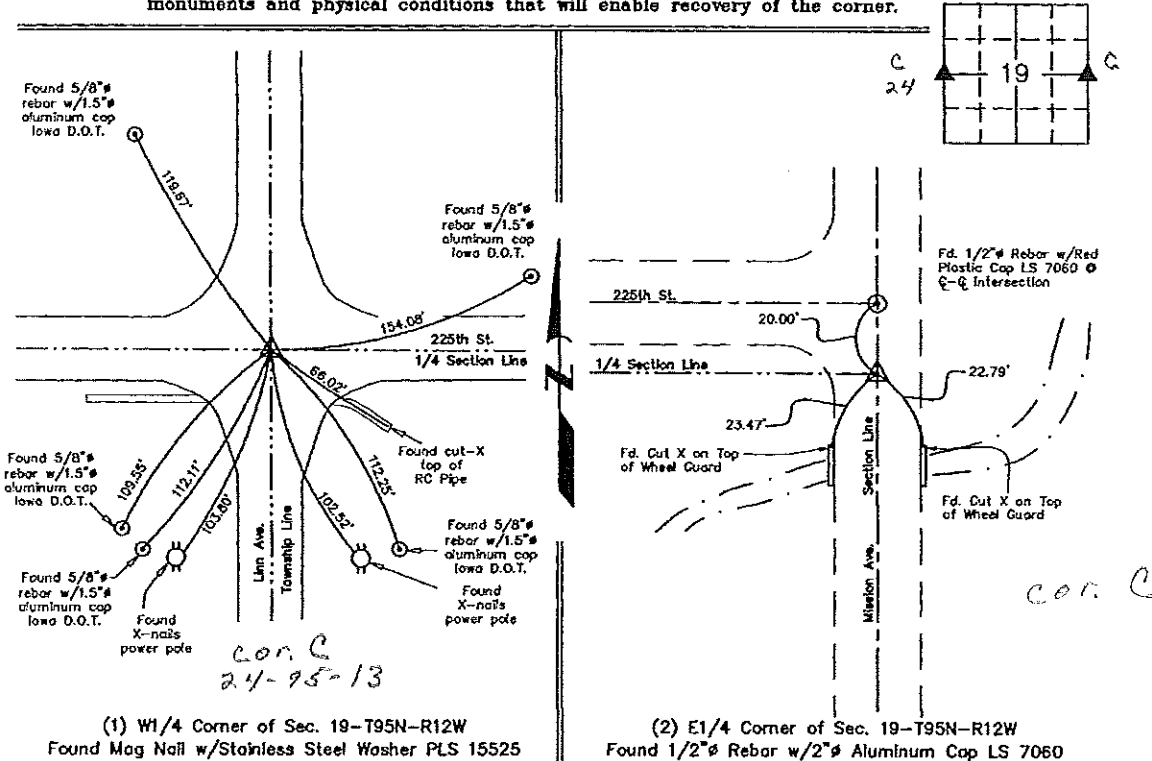
Monument Description and Remarks: (1) W1/4 Corner of Section 19-T95N-R12W:
 Found mag nail w/stainless steel washer. Updating certificate because only 8 of the 11 recorded ties are remaining.

(2) E1/4 Corner of Section 19-T95N-R12W:
 Found 1/2" rebar w/2" aluminum cap LS 7060. Updating certificate because only 3 of the 4 recorded ties are remaining.

PLAN VIEW

Project Number 091060.LS
 Field Book: N.H. #2, Page 31

Show a minimum of three reference ties to durable physical objects, relevant monuments and physical conditions that will enable recovery of the corner.



(1) W1/4 Corner of Sec. 19-T95N-R12W
 Found Mag Nail w/Stainless Steel Washer PLS 15525

(2) E1/4 Corner of Sec. 19-T95N-R12W
 Found 1/2" Rebar w/2" Aluminum Cap LS 7060

I hereby certify that this land surveying document was prepared and the related survey work was performed by me or under my direct personal supervision and that I am a duly licensed Land Surveyor under the laws of the State of Iowa.

Lyle G. Tekippe 4-9-09
 Lyle G. Tekippe Date

License Number 7060
 My license renewal date is December 31, 2010.
 Sheets covered by this seal: Individual



List Corners to be Indexed			
Corners	Section	Twp.	Range
W1/4	19	95N	12W
E1/4	19	95N	12W

X:\Section Corners\Sec. 19\19-95-12KO.dwg