

Chickasaw Co. Recorder
 Cindy Messersmith
Fee Book 2015-0112
 02/02/2015 @02:19PM
 SCC SEC COR CERT # Pages: 1
 Book: Page: \$7.00
 Total Fees:

Prepared by & Return to: Herold - Recks Surveying, 10 East Main Street, New Hampton, IA 50659, Ph. 641-394-2725

UNITED STATES PUBLIC LAND SURVEY CORNER CERTIFICATE

Land Survey Monuments situated in Section 19, Township 95 North, Range 12 West of the Fifth Principal Meridian, Chickasaw County, Iowa. Not previously recorded in the County Recorder's office.

This certificate is being prepared in compliance with Iowa Code Chapter 355.11 because:

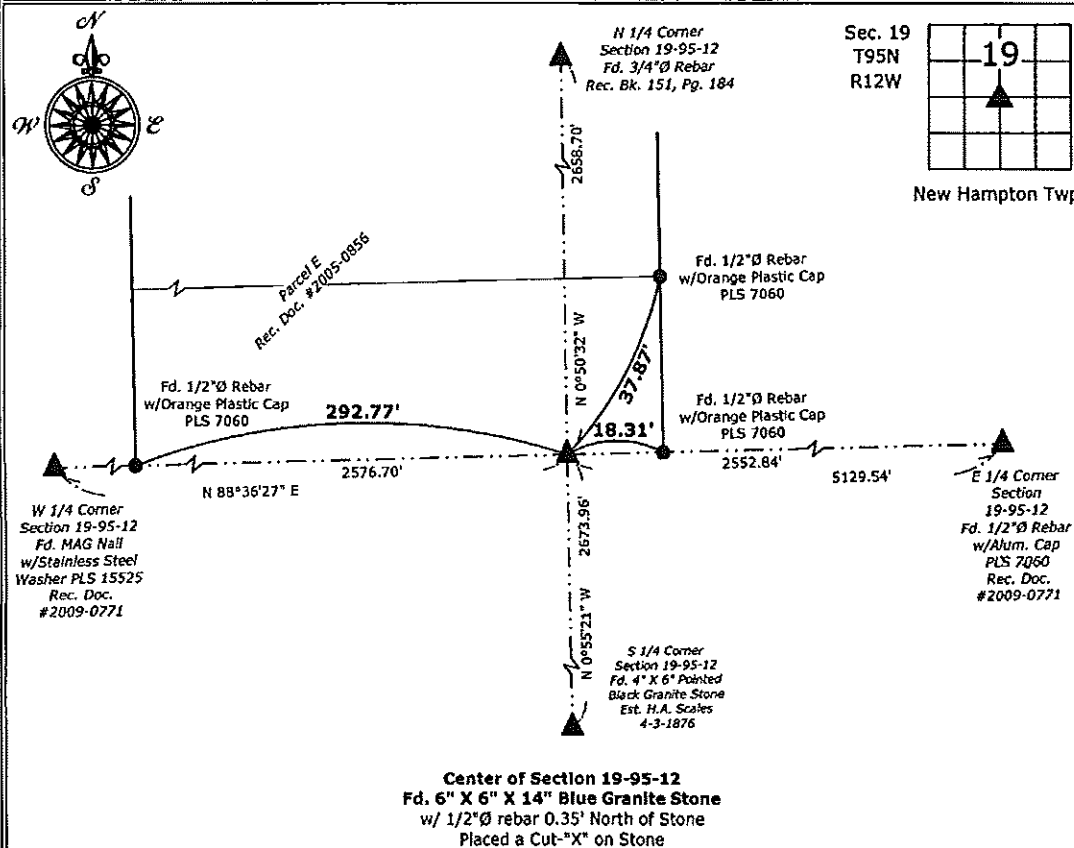
- There is no certificate on file for this corner.
- There are no longer three valid ties of record.
- There are changes to reference ties of record.
- There is change of monumentation of record.
- To clarify description of record monument (ties).

Monument Description and Remarks:

Center of Section: Found 6" X 6" X 14" Blue Granite Stone. Corner information obtained from the Chickasaw County Engineer's Office in Survey Book 1, Page 77. This Corner was originally established by the County Surveyor H.H. Potter on 10-15-1868 at the intersection of the Quarter-Quarter Section Lines with a Post, said Post was later perpetuated by the current monument (Stone) by the County Surveyor H.A. Scales 4-3-1876, information also on file in the County Engineer's Survey Record Book 2, Page 258. The Corner is on line between the W 1/4 Corner and the E 1/4 Corner, a Cut "X" was placed on the Stone and there is also a 1/2"Ø Rebar 0.35' North of the Stone.

PLAN - VIEW

(Show a minimum of three reference ties to durable physical objects, relevant monuments and physical conditions that will enable recovery of the corner.)



I hereby certify that this land surveying document was prepared and the related survey work was performed by me or under my direct personal supervision and that I am a duly licensed Land Surveyor under the laws of the State of Iowa.

Paul R. Herold 2-2-15
 Paul R. Herold Date:
 License number 15525
 My license renewal date is December 31, 2016.
 Sheets covered by this seal: Individual sheet only

List Corners to be Indexed			
Corners	Section	Twp.	Range
CTR	19	95	12

Project Number: 2014-246
 FB: New Hampton 2, Pgs. 28-29

File: S:_CSD Projects\County Central Systems\CHICKASAW\CHICK-28 (New Hampton)\CHICK-28.dwg, 2/2/2015 1:28:49 PM